

1 BH (TYPE I) - Unit No.6 at Ground and from 4th to 27th Floor Tower No. A4
Total Area - 52.95 sq.mt. (570 sq.ft.) Carpet Area - 31.78 sq.mt. (342 sq.ft.) Balcony Area - 4.87 sq. mt. (52 sq.ft.)
1 Bed Room • 1 Study Room • Lobby • 1 Toilet • 1 Balcony

SHRI RADHA
**SKY
PARK**
SHRI RADHA SKY GARDENS-PHASE II



1 Sq.Mt. = 10.764 Sq.Ft.

1 BLK (TYPE I) - Unit No.1 at Ground, 4th to 27th Floor Unit No.2,4,5,7 & 8 from Ground to 27th Floor
Unit No.3 from 2nd to 27th Floor Tower No. A4

Total Area - 55.65 sq.mt. (599 sq.ft.) Carpet Area - 33.02 sq.mt. (355 sq.ft.) Balcony Area - 6.81 sq. mt. (73 sq.ft.)
1 Bed Room • 1 Study Room • Lobby • 1 Toilet • 2 Balconies

SHRI RADHA
**SKY
PARK**
SHRI RADHA SKY GARDENS-PHASE II

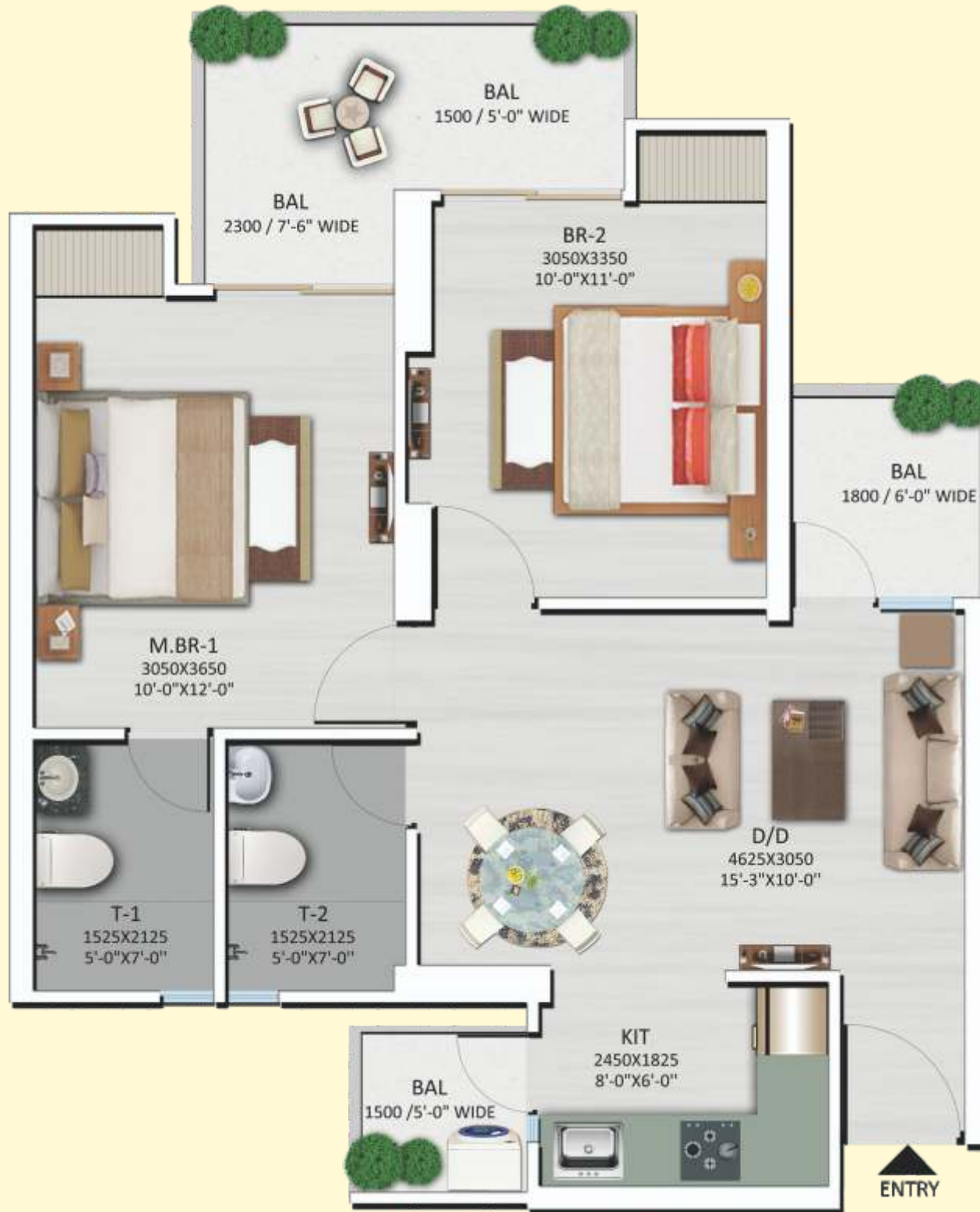


1 Sq.Mt. = 10.764 Sq.Ft.

2 BHK (TYPE 2) - Unit No.2 & 3 from 3rd to 29th Floor Tower No. A1, A2 & A3
Total Area - 80.82 sq.mt. (870 sq.ft.) Carpet Area - 47.94 sq.mt. (516 sq.ft.) Balcony Area - 9.84 sq. mt. (105 sq.ft.)
2 Bed Room • Drawing/Dining • Kitchen • 2 Toilets • 2 Balconies



2 BHK (TYPE I) - Unit No.1 from Ground to 29th Floor Unit No.4 at Ground, 4th to 29th Floor
 Unit No.6 & 7 from Ground to 26th Floor Tower No. A1
 Unit No. 1 & 4 at Ground, 4th to 29th Floor Unit No.6 & 7 from Ground to 26th Floor
 Tower No. A2 & A3
 Total Area - 87.79 sq.mt. (945 sq.ft.) Carpet Area - 50.51 sq.mt. (543 sq.ft.) Balcony Area - 12.11 sq. mt. (130 sq.ft.)
 2 Bed Room • Drawing/Dining • Kitchen • 2 Toilets • 3 Balconies



3 BHK (TYPE I) - Unit No.5 & 8 from Ground to 29th Floor Tower No. A1, A2 & A3
 Total Area - 101.73 sq.mt. (1095 sq.ft.) Carpet Area - 59.68 sq.mt. (642 sq.ft.) Balcony Area - 12.94 sq. mt. (139 sq.ft.)
 3 Bed Room • Drawing / Dining • Kitchen • 2 Toilets • 3 Balconies

