

Floor Plan

Type A

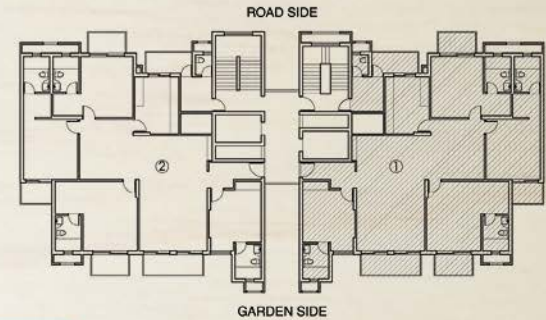
4 BHK + Utility

Total Area: 2800 sq. ft. (260.13 sq. mt.)

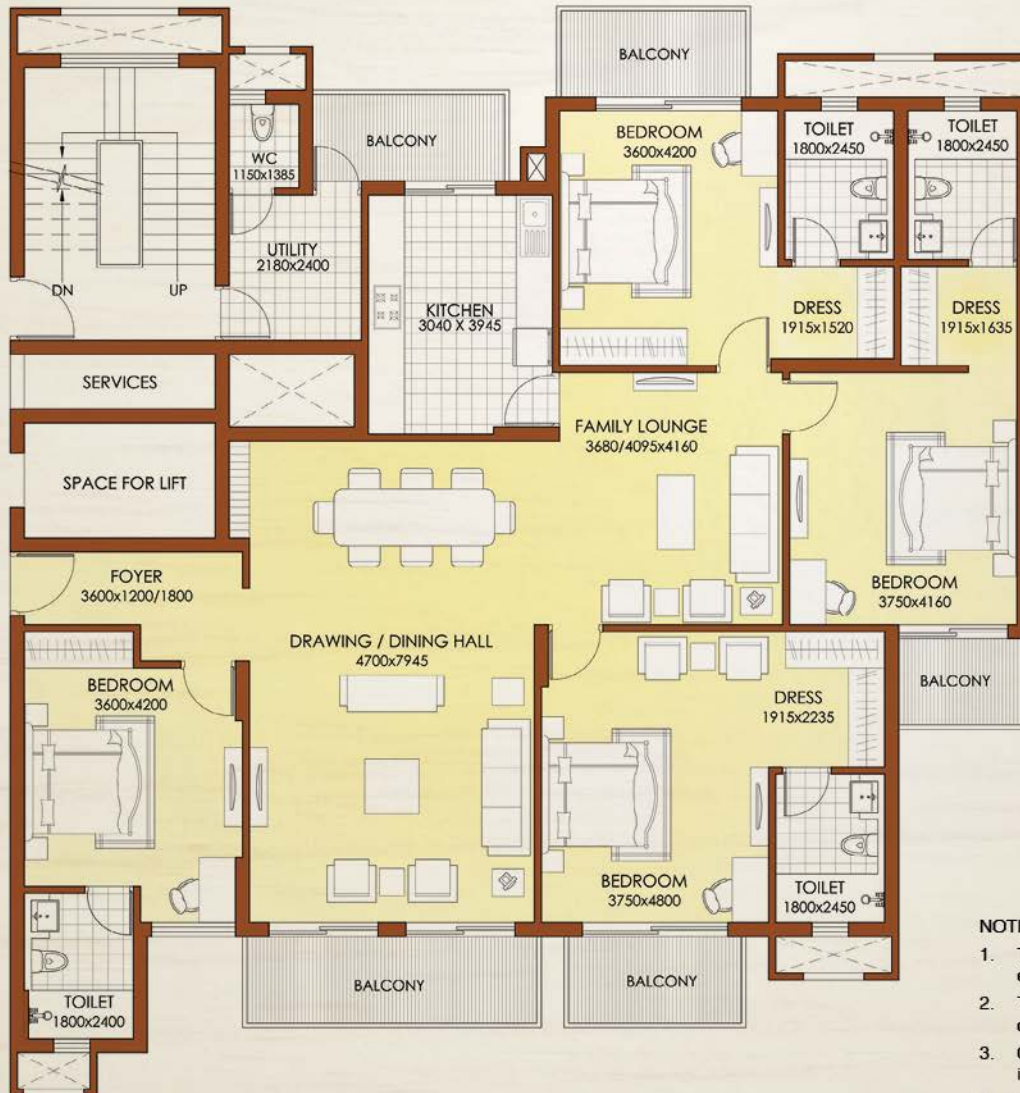
Unit Built up Area: 2310 sq. ft.

Common Circulation + Services: 490 sq. ft.

Carpet Area: 1892 sq. ft.



Key Plan



NOTE:

1. The window size/its location in rooms may change because of elevational features.
2. The overall layout may vary because of statutory reasons in case required.
3. Currently, no columns are shown in the plan which will be incorporated as per structure.
4. Layout shown is for illustration purposes, for specific unit floor plan please contact sales team.

Floor Plan

Type B

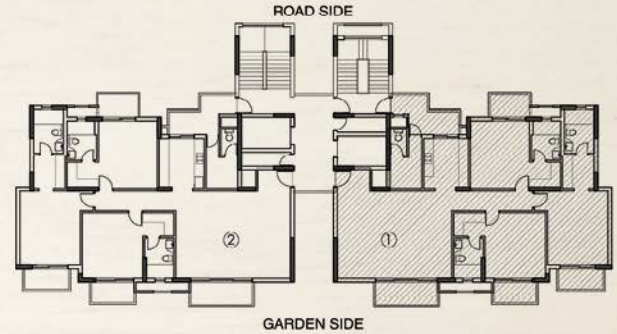
3 BHK + Utility

Total Area: 2315 sq. ft. (215.07 sq. mt.)

Unit Built up Area: 1860 sq. ft.

Common Circulation + Services: 455 sq. ft.

Carpet Area: 1470 sq. ft.



Key Plan

NOTE:

1. The window size/its location in rooms may change because of elevational features.
2. The overall layout may vary because of statutory reasons in case required.
3. Currently, no columns are shown in the plan which will be incorporated as per structure.
4. Layout shown is for illustration purposes, for specific unit floor plan please contact sales team.

Floor Plan

Type C

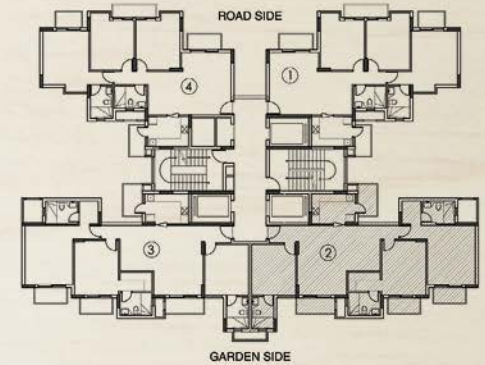
3 BHK + 3T

Total Area: 1800 sq. ft. (167.22 sq. mt.)

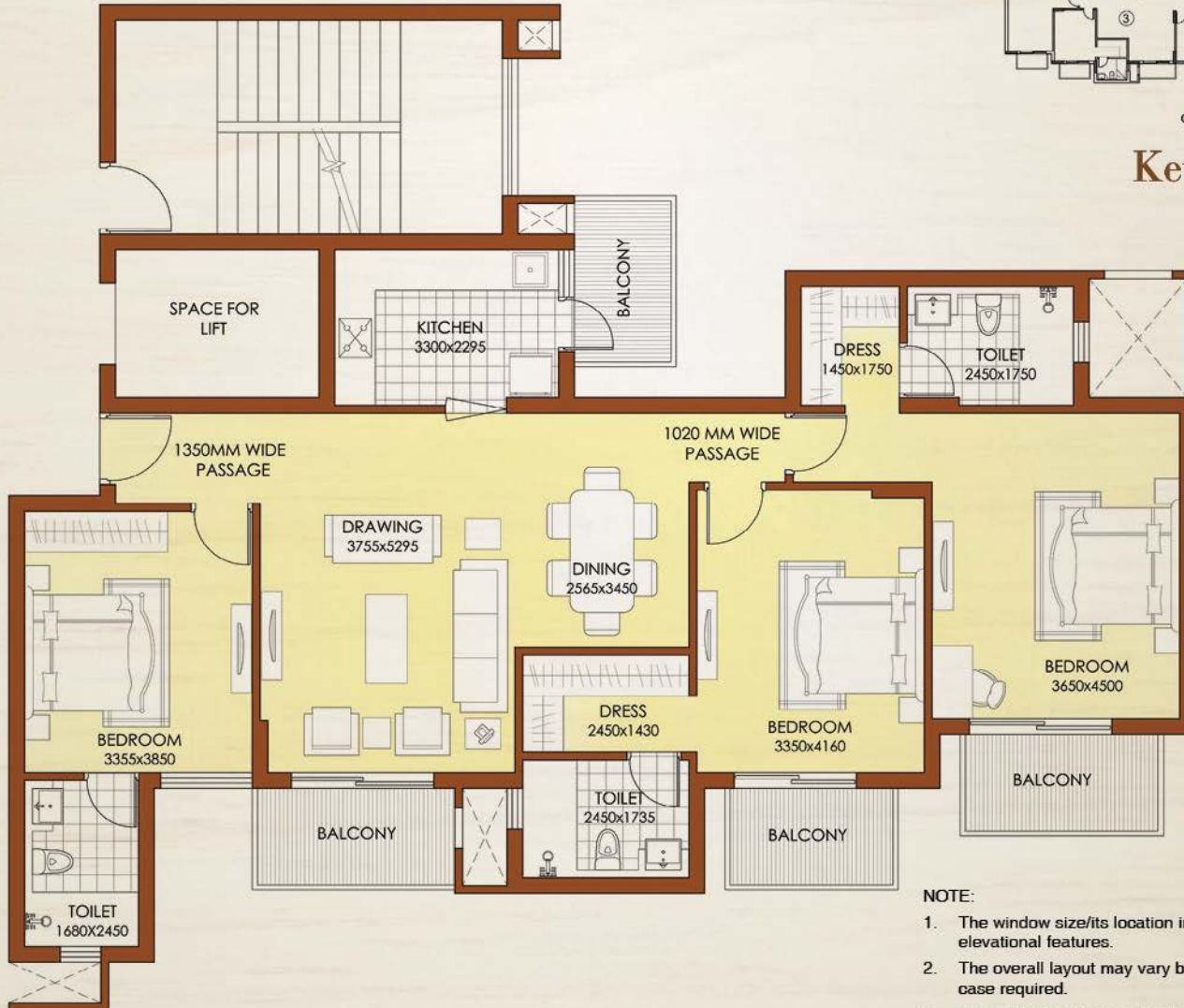
Unit Built up Area: 1460 sq. ft.

Common Circulation + Services: 340 sq. ft.

Carpet Area: 1164 sq. ft.



Key Plan



NOTE:

1. The window size/its location in rooms may change because of elevational features.
2. The overall layout may vary because of statutory reasons in case required.
3. Currently, no columns are shown in the plan which will be incorporated as per structure.
4. Layout shown is for illustration purposes, for specific unit floor plan please contact sales team.

Floor Plan

Type D

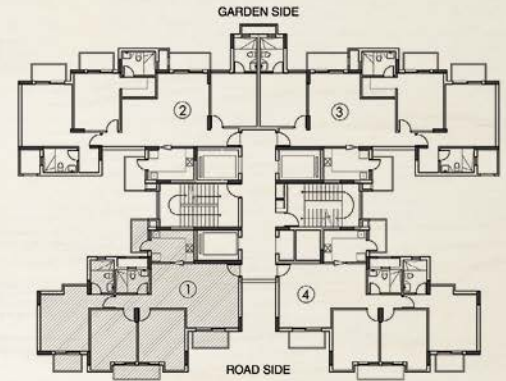
3 BHK + 2T

Total Area: 1500 sq. ft. (139.35 sq. mt.)

Unit Built up Area: 1225 sq. ft.

Common Circulation + Services: 275 sq. ft.

Carpet Area: 977 sq. ft.



Key Plan

NOTE:

1. The window size/its location in rooms may change because of elevational features.
2. The overall layout may vary because of statutory reasons in case required.
3. Currently, no columns are shown in the plan which will be incorporated as per structure.
4. Layout shown is for illustration purposes, for specific unit floor plan please contact sales team.

Floor Plan

Type E

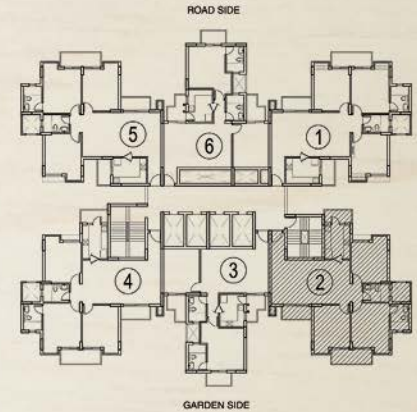
3 BHK + 2T

Total Area: 1540 sq. ft. (143.07 sq. mt.)

Unit Built up Area: 1270 sq. ft.

Common Circulation + Services: 270 sq. ft.

Carpet Area: 1020 sq. ft.



Key Plan

NOTE:

1. The window size/its location in rooms may change because of elevational features.
2. The overall layout may vary because of statutory reasons in case required.
3. Currently, no columns are shown in the plan which will be incorporated as per structure.
4. Layout shown is for illustration purposes, for specific unit floor plan please contact sales team.

Floor Plan

Type E 1

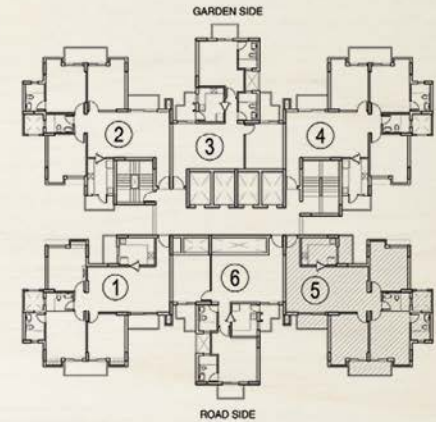
3 BHK + 2T

Total Area: 1540 sq. ft. (143.07 sq. mt.)

Unit Built up Area: 1270 sq. ft.

Common Circulation + Services: 270 sq. ft.

Carpet Area: 1020 sq. ft.



Key Plan

NOTE:

1. The window size/its location in rooms may change because of elevational features.
2. The overall layout may vary because of statutory reasons in case required.
3. Currently, no columns are shown in the plan which will be incorporated as per structure.
4. Layout shown is for illustration purposes, for specific unit floor plan please contact sales team.

Floor Plan

Type F

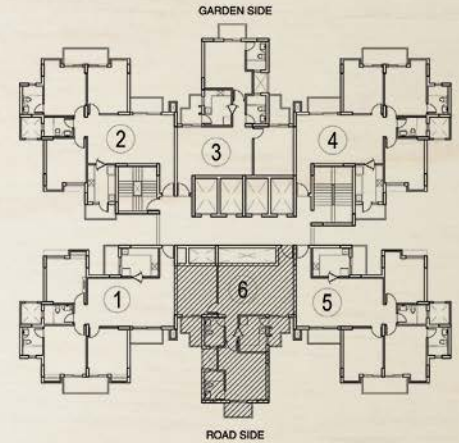
2BHK

Total Area: 1240 sq. ft. (143.07 sq. mt.)

Unit Built up Area: 1020 sq. ft.

Common Circulation + Services: 220 sq. ft.

Carpet Area: 821 sq. ft.



Key Plan

NOTE:

1. The window size/its location in rooms may change because of elevational features.
2. The overall layout may vary because of statutory reasons in case required.
3. Currently, no columns are shown in the plan which will be incorporated as per structure.
4. Layout shown is for illustration purposes, for specific unit floor plan please contact sales team.