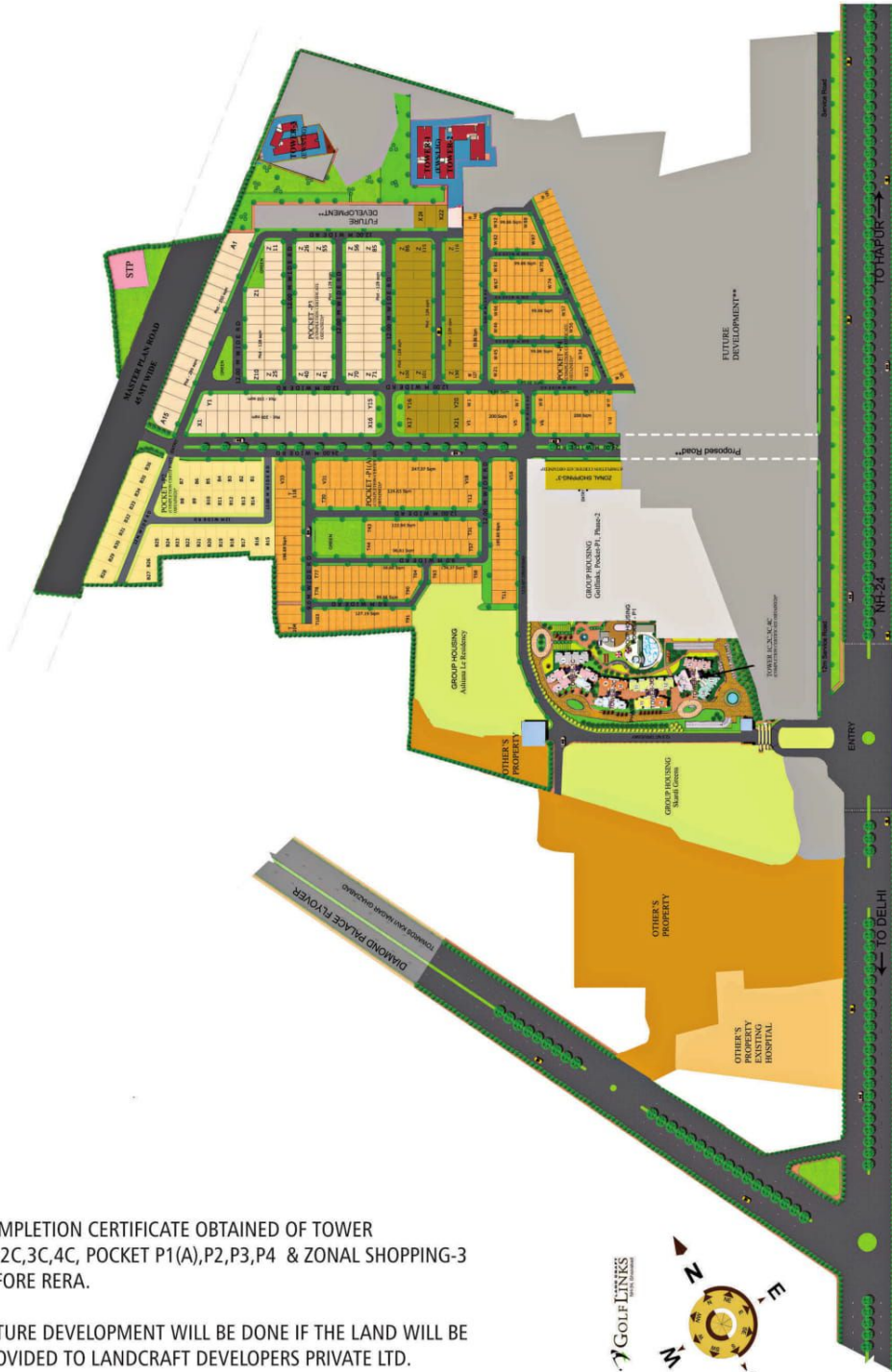




A lifestyle for  
the privileged few...



RERA Registration Number : UPRERAPRJ5633

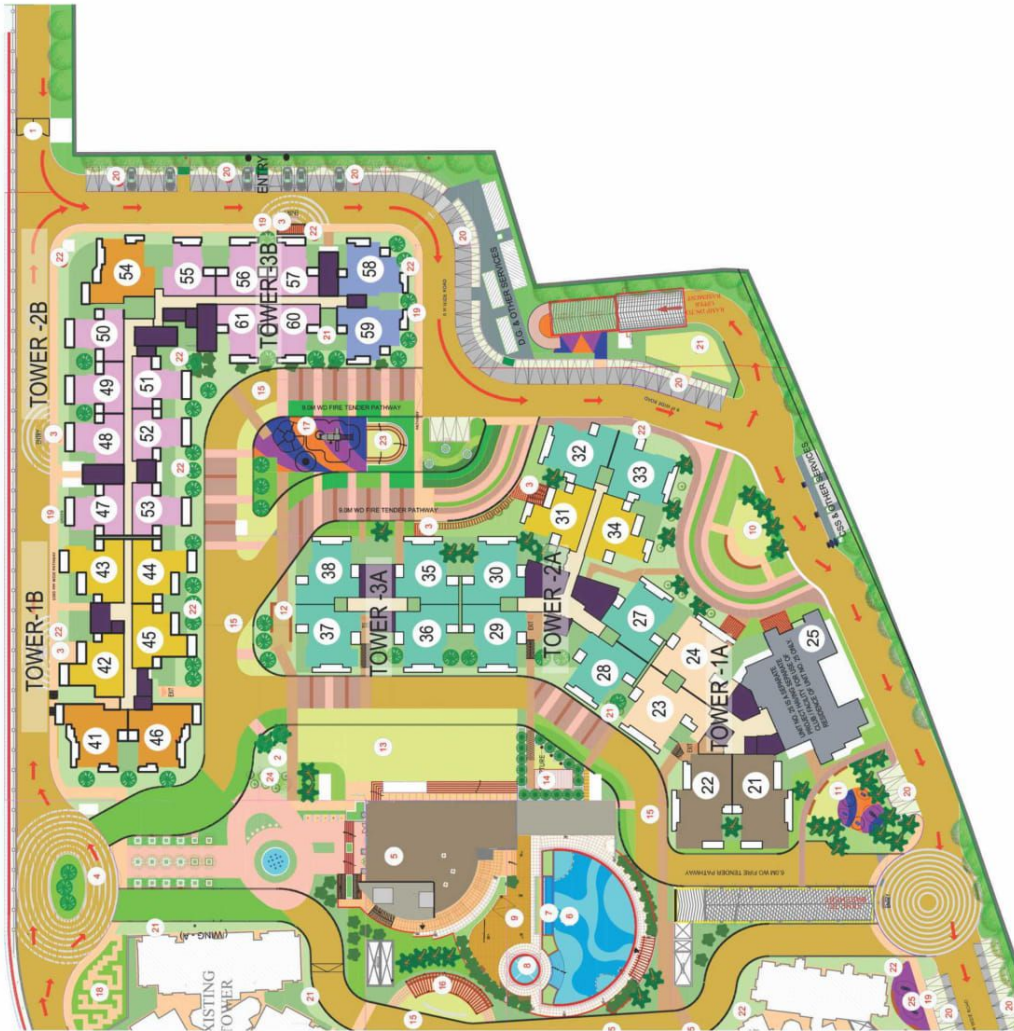


\* COMPLETION CERTIFICATE OBTAINED OF TOWER 1C,2C,3C,4C, POCKET P1(A),P2,P3,P4 & ZONAL SHOPPING-3 BEFORE RERA.

\*\* FUTURE DEVELOPMENT WILL BE DONE IF THE LAND WILL BE PROVIDED TO LANDCRAFT DEVELOPERS PRIVATE LTD.

**AREA STATEMENT  
(PHASE - 2)**

	TYPE-1135, 2BHK + 2TOI. (638.090 SQ.FT., 59.28 Sq.m)
	TYPE-1405, 3BHK + 2TOI. (799.980 SQ.FT., 74.32 Sq.m)
	TYPE-1450, 3BHK + 2TOI. + DINNING (805.685 SQ.FT., 74.85 Sq.m)
	TYPE-1600, 3BHK + 3TOI. + DINNING + STORE (927.319 SQ.FT., 86.15 Sq.m)
	TYPE-1785, 3BHK + 3TOI. + DINNING (954.229 SQ.FT., 88.65 Sq.m)
	TYPE-2115, 3BHK + 4TOI. + STUDY + DINNING (1245.718 SQ.FT., 115.73 Sq.m)
	TYPE-2375, 4BHK + 3TOI./DRESS + DINNING (1389.632 SQ.FT., 129.10 Sq.m)



Disclaimer : The imagery used on the brochures are indicative of style only. photographs of interiors, surrounding views and location may have been digitally enhanced or altered and do not represent actual views or surrounding views. These photographs are indicative only and the layout not to scale. 1 Sqm = 10.764 Sq. ft.

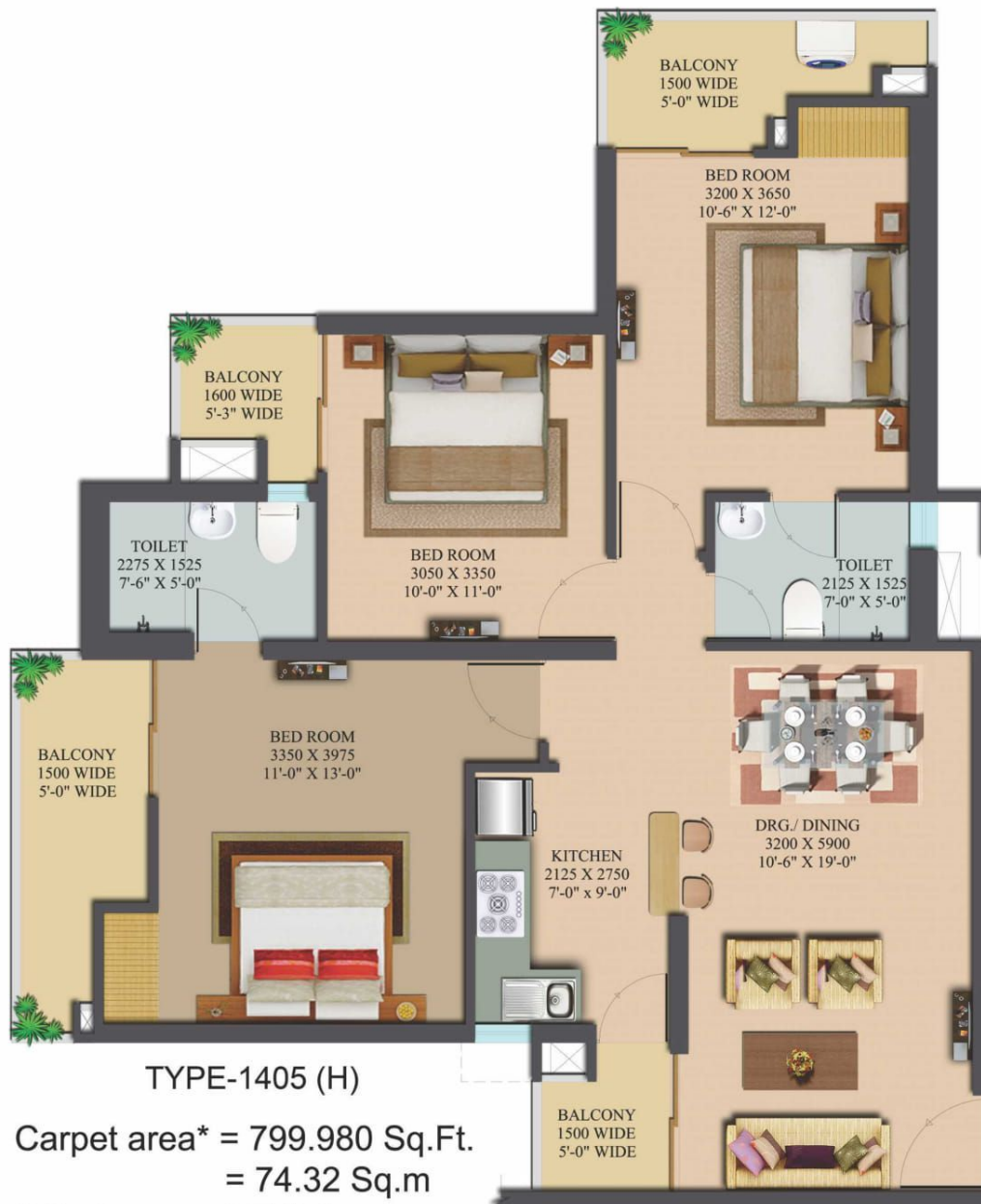


**TYPE-1135 (G)**

**Carpet area\* = 638.090 Sq.Ft.  
= 59.28 Sq.m**

**2 Bedroom + 2 Toilet**

**\* Carpet area as defined in THE REAL ESTATE  
(REGULATION AND DEVELOPMENT) ACT,2016**



**TYPE-1405 (H)**

**Carpet area\* = 799.980 Sq.Ft.  
= 74.32 Sq.m**

**3 Bedroom + 2 Toilet**

\* Carpet area as defined in THE REAL ESTATE (REGULATION AND DEVELOPMENT ) ACT,2016



**TYPE-1450 (J)**

**Carpet area\* = 805.685 Sq.Ft.  
= 74.85 Sq.m**

**3 Bedroom + 2 Toilet**

**\* Carpet area as defined in THE REAL ESTATE  
(REGULATION AND DEVELOPMENT ) ACT,2016**

Disclaimer : The imagery used on the brochures are indicative of style only. photographs of interiors, surrounding views and location may have been digitally enhanced or altered and do not represent actual views or surrounding views. These photographs are indicative only and the layout not to scale. 1 Sqm = 10.764 Sq. ft.



**TYPE-1600 (K)**

**Carpet area\* = 927.319 Sq.Ft.  
= 86.15 Sq.m**

**3 Bedroom + 3 Toilet + Store**

**\* Carpet area as defined in THE REAL ESTATE  
(REGULATION AND DEVELOPMENT) ACT,2016**



TYPE-1785 (L)

Carpet area\* = 954.229 Sq.Ft.  
= 88.65 Sq.m

3 Bedroom + 3 Toilet

\* Carpet area as defined in THE REAL ESTATE  
(REGULATION AND DEVELOPMENT ) ACT,2016





**TYPE-2115 (M)**

**Carpet area\* = 1245.718 Sq.Ft.  
= 115.73 Sq.m**

**3 Bedroom + 4 Toilet + Study**

**\* Carpet area as defined in THE REAL ESTATE  
(REGULATION AND DEVELOPMENT ) ACT,2016**

**TYPE-2375 (N)**  
**Carpet area\* = 1389.632 Sq.Ft.**  
**= 129.10 Sq.m**  
**4 Bedroom + 3 Toilet**

\* Carpet area as defined in THE REAL ESTATE (REGULATION AND DEVELOPMENT ) ACT,2016



**GOLFLINKS**



**WAVE CITY**

**COLUMBIA  
ASIA  
HOSPITAL  
GHAZIABAD**

**GT Road**

**SECTOR 63**

**INDIRAPURAM**

**ELECTRONIC CITY, NOIDA**

**AKSHAR DHAM  
TEMPLE**

**YAMUNA RIVER**

**RING ROAD**



**GARG GROUP**



**LandCraft Developers Pvt. Ltd.**

**Corporate Office:** Golf Links, NH-24, Near Columbia Hospital, Village Mehrauli,  
Paragna Dasna, Tehsil & District Ghaziabad, Uttar Pradesh - 201002

**Email :** [info@landcraft.in](mailto:info@landcraft.in) | [www.landcraft.in](http://www.landcraft.in)

**Registered Office :** Parmesh Corporate Towers, 309, 3rd Floor, Plot No. 13  
Karkardooma Community Centre, Delhi 110092.

**GolfLinks Marketing:**

**CIN:** U45201DL2005PTC132131

**RERA Registration Number :** UPRERAPRJ5633