



It's not a home, it's a hideaway.



Pious Hideaways

Sector 150, Noida
3 Bedroom & 3 Bedroom with Study





Pious Hideaways

Sector 150, Noida

Revealing an
all-new way
of living.

Welcome to the world of Pious Hideaways – a residential haven that truly lives up to its name. Located in Sector 150, Pious Hideaways is how you define 'escape' from the ordinary. Twelve imposing towers adorn the skyline, while the inspiring Royal Spanish architecture unfurls a spectacular vista. So many opposites, yet so familiar. Pious Hideaways is close to Sector 148, Noida Metro Station and a comfortable drive away from Delhi. In other words, it is never far away from the necessities of life. The location has prominent schools, education institutes and corporate offices in its vicinity, thereby making it one of the most sought-after addresses in town.





The image shown is for demonstrative purpose only and is subject to change.

From HomeKraft, the legacy
of ATS continues.

HomeKraft is an aspirational homes venture of ATS group, positioned to offer quality housing at comfortable prices. HomeKraft has garnered significant impression in the real estate sector with its new concept in the realm of aspirational housing. HomeKraft's new venture Pious Hideaways comes with the contemporary features, innovation in housing, and the concept of owning one of the most futuristic homes in Noida.





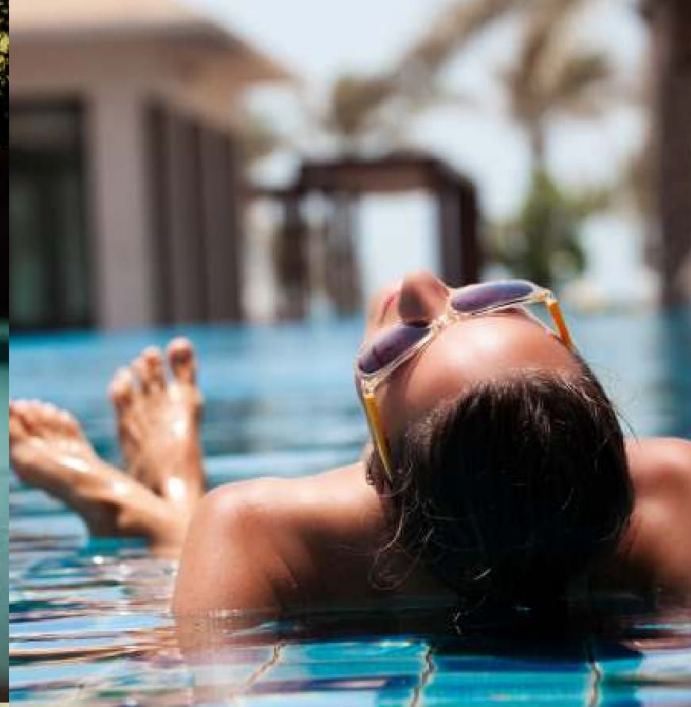
The image shown is for demonstrative purpose only and is subject to change

Love for your
family is pious,

Pious Hideaways certainly takes a leaf out of nature's book when it comes to its blueprint. While its architecture is in absolute sync with the quintessential Spanish lifestyle, designed by Architect **Hafeez Contractor**. Every detail lives on Spanish themes like arcades, cornice mouldings, rafters, stucco, etc. And is perfected with precision. With 80% open area and each apartment overlooking the central greens, Pious Hideaways is an answer to the prayers of homemakers seeking a modern-day nest.

Like your hideaway.





Comforts that we need.

A host of state-of-the-art amenities welcome you when you step within the precinct of Pious Hideaways, which match many a quintessential, cosmopolitan lifestyle. Clubhouse, swimming pool, basketball, tennis and squash court, multi-purpose hall, gym and green landscaping. There is absolutely nothing that stops you from living your life in a grand way.



Pious Centre



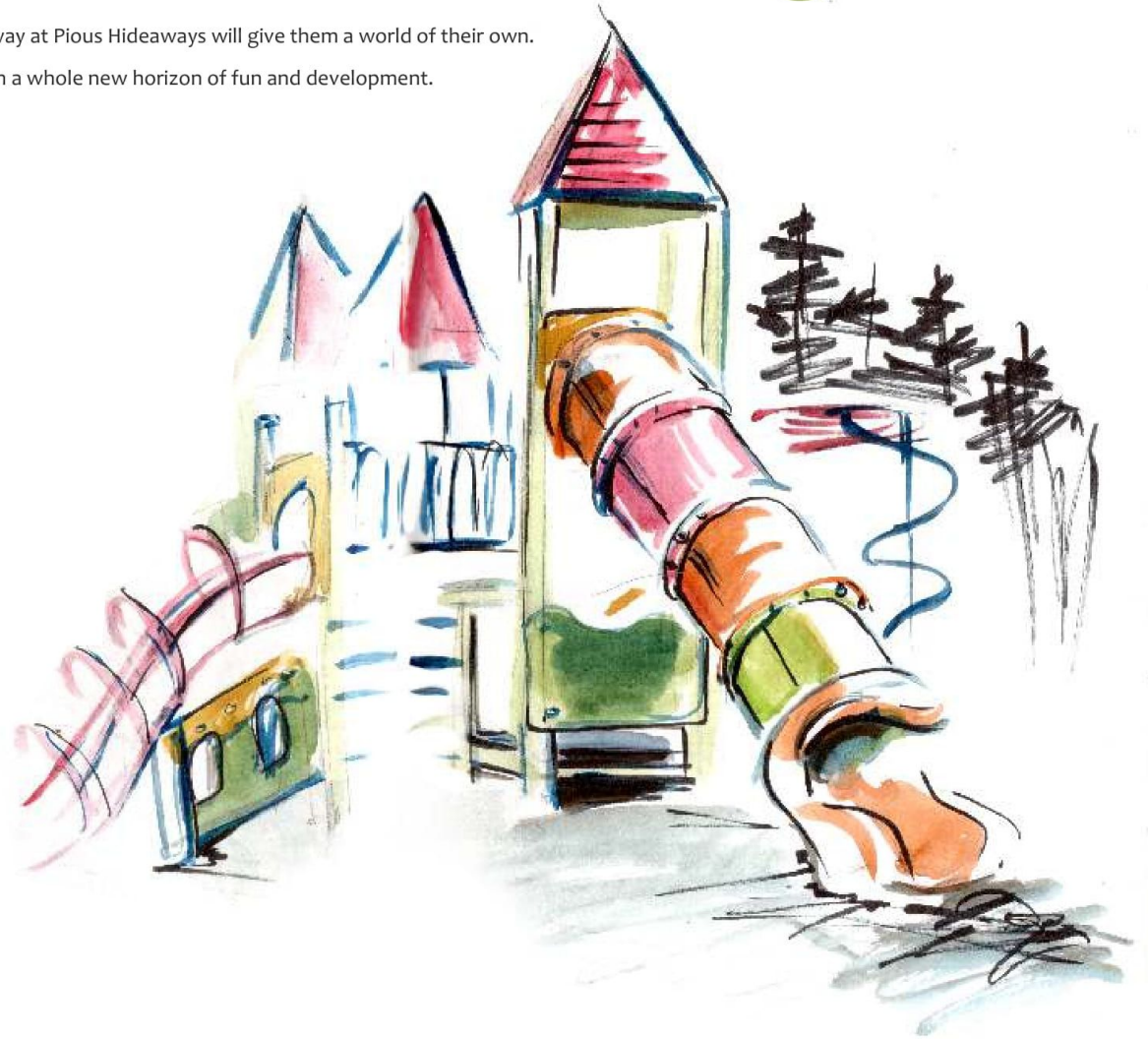
Surrounded by flourishing greenery,
the Pious Centre provides you the perfect setting
for meditation. The semi-enclosed space with sunlight,
that dreamily seeps in, is where you can find peace
and serenity.

Kids Hideaway

Kids like to hide, it's in their nature. The kids' hideaway at Pious Hideaways will give them a world of their own.

The kids' play area and play tunnel will bring to them a whole new horizon of fun and development.

Swing | Slide | See-saw | Maze | Merry-go-round



The Social Connections

DPS Noida

JBM International School

Shiv Nadar School

Pathways School

The Shriram Millennium School

Lotus Valley School

Genesis Global School

SCHOOL

UNIVERSITY

Amity University

Gautam Buddha University

Sharda University

Noida International University

BIMTECH, Knowledge Park

Yatharth Super Speciality Hospital

Kailash Hospital

Jaypee Hospital

HOSPITAL

MULTIPLEX

PVR Mall of India

PVR Superplex, Logix City Center Mall

Carnival Cinemas, Great India Place

Inox, Connaught Place Mall

Cinepolis, Grand Venice Mall

Movie Mime, Omaxe NRI mall

Mall of India

Logix City Center Mall

Great India Place Mall

Gardens Galleria

Grand Venice Mall

ATS Kinghood Drive (upcoming)

SHOPPING

METRO CONNECTIVITY

Metro Station, Sector 148

Location Map



- It is one of the greenest sector of Noida
- Shaheed Bhagat Singh Park, spread over 40 acres, one of the biggest in Noida is at walking distance
- The low density of this sector means more open spaces per family
- Easily accessible location through 6 lane Noida - Greater Noida expressway
- Easy connectivity to rest of the NCR via Noida – Greater Noida metro

Site Plan of Pious Hideaways



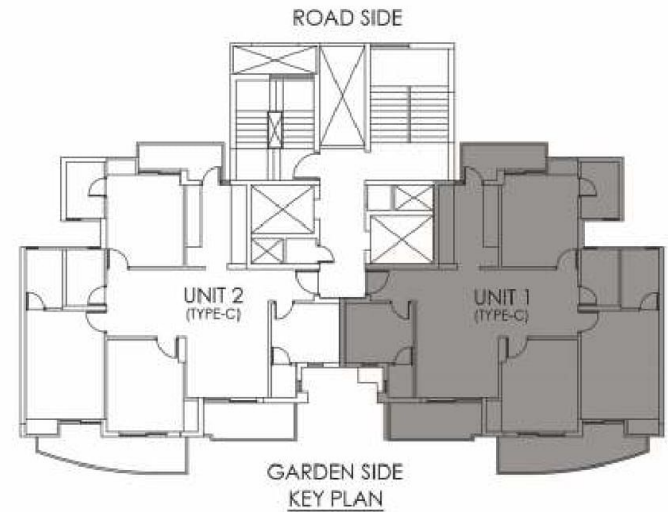
- Type C - 1675 sq. ft.
- Type D - 1615 sq. ft.
- Type E - 1400 sq. ft.



Complete Site Plan

Disclaimer: The Site Plan shown is tentative. The overall layout may vary because of statutory/design reasons.

Type C - Typical Floor Plan



Saleable Area : 155.60 sq. m.
121.23 sq. m. (Built-up Area) + 34.37 sq. m.
(Common Circulation + Services)
Carpet Area : 94.76 sq. m.

Saleable Area : 1675 sq. ft.
1305 sq. ft. (Built-up Area) + 370 sq. ft.
(Common Circulation + Services)
Carpet Area : 1020 sq. ft.

Note:

1. The window size/its location in rooms may change because of elevational features.
2. The overall layout may vary because of statutory reasons in case required.
3. Column location & sizes may vary as per structure.
4. Layout shown is for illustration purpose, for specific unit floor plan please contact sales.
5. Saleable area is tentative and is subject to change due to modifications asked for by approving authorities from time to time till occupancy certificate is obtained. Architect reserves the right to add/delete any details/specifications/elevations mentioned.

Isometric View



Type D - Typical Floor Plan



Saleable Area : 150.03 sq.m.
 120.77 sq.m. (Built-up Area) + 29.26 sq.m.
 (Common Circulation + Services)
 Carpet Area : 90.57 sq.m.

Saleable Area : 1615 sq. ft.
 1300 sq. ft. (Built-up Area) + 315 sq. ft.
 (Common Circulation + Services)
 Carpet Area : 975 sq. ft.

Note:

1. The window size/its location in rooms may change because of elevational features.
2. The overall layout may vary because of statutory reasons in case required.
3. Column location & sizes may vary as per structure.
4. Layout shown is for illustration purpose, for specific unit floor plan please contact sales.
5. Saleable area is tentative and is subject to change due to modifications asked for by approving authorities from time to time till occupancy certificate is obtained. Architect reserves the right to add/delete any details/specifications/elevations mentioned.

Isometric View



Type E - Typical Floor Plan



Saleable Area : 130.05 sq.m.
 103.58 sq.m. (Built-up Area) + 26.47 sq.m.
 (Common Circulation + Services)
 Carpet Area : 80.82 sq.m.

Saleable Area : 1400 sq. ft.
 1115 sq. ft. (Built-up Area) + 285 sq. ft.
 (Common Circulation + Services)
 Carpet Area : 870 sq. ft.

Note:

1. The window size/its location in rooms may change because of elevational features.
2. The overall layout may vary because of statutory reasons in case required.
3. Column location & sizes may vary as per structure.
4. Layout shown is for illustration purpose, for specific unit floor plan please contact sales.
5. Saleable area is tentative and is subject to change due to modifications asked for by approving authorities from time to time till occupancy certificate is obtained. Architect reserves the right to add/delete any details/specifications/elevations mentioned.

Isometric View

