

A HOME IS  
BEYOND IT'S FOUR WALLS

COME HOME TO

PRIDE





# PRIDE

Right from its Grand entrance, to the opulent water bodies, sprawling greens & a host of Amenities, Pride offers an experience that befits a Resort. A home at Pride is an experience, truly nothing comes close.

**PRIDE TAKES LOW-DENSITY LIVING TO THE NEXT LEVEL WITH ONLY 17 APARTMENTS PER ACRE.**

This lush green township which is spread across 102 acres in sector 77 Faridabad will cater to your every need as it is in close proximity to all leading schools, hospitals and shopping centres of Greater Faridabad.

COME HOME TO REMARKABLE LUXURY





ACTUAL SITE IMAGE



ACTUAL SITE IMAGE



Pride is your very own sanctuary of solitude away from the stress of everyday life, welcome to the haven of peace and grandiose.





The only township in Faridabad comparable to the standards available in Chanakyapuri and Malcha Marg of Delhi.

Pride promises a super-luxurious lifestyle dotted with lush greens all across and exquisite water-bodies, Pride offers residents a lifestyle that has never been seen before in Faridabad.





ACTUAL SITE IMAGE



ACTUAL SITE IMAGE



ACTUAL SITE IMAGE





ACTUAL SITE IMAGE

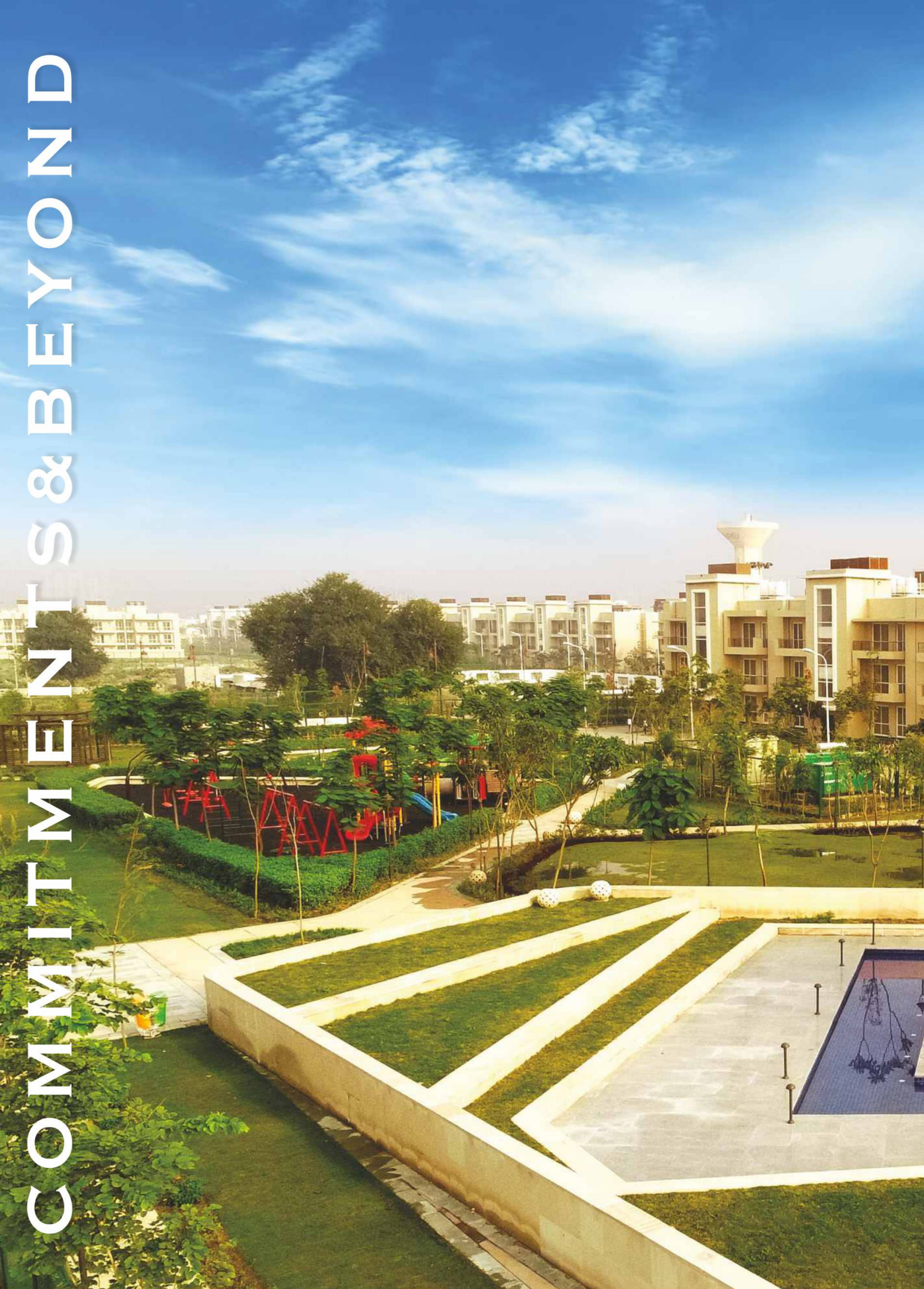
**A STROLL ALONG THE BEAUTIFULLY LIT BOULEVARD'S AT NIGHT  
IS ALL YOU NEED TO LIFT UP YOUR SPIRITS.**

Experience the Grandeur of Pride, seeing the parks come alive is a sight to behold. Pride celebrates the festival of life, through lights, all year.



ACTUAL SITE IMAGE

COMMITMENTS & BEYOND



## BLESSINGS PARK

Enjoy a walk along the **WELL-LIT PATHWAYS** or rejuvenate your soul amidst an oasis of water at your own **MEDITATION PAVILION** or just Unwind in the lavish greens and the beautiful hibiscus garden. This park also houses sports facilities play area for children.



# SERENITY GARDEN

Let your Imagination flow, nurture your body and soul with facilities like tree court, pavilion, kids play area, badminton court and much more.





## SPORTS ARENA 1, 2 & 3

These parks will consist of facilities like badminton courts, kids play areas, tree court with pavilion & an open air gym etc. Works on these parks is ongoing.

### PARKS UNDER DEVELOPMENT



BASKET BALL COURT



OPEN AIR GYM



KIDS PLAY AREA



BADMINTON COURT

ARTISTIC IMPRESSION



ACTUAL SITE IMAGE



ACTUAL SITE IMAGE

## WELLNESS PARK

This extravagant park will comprise of two badminton courts, a tree Court, lush green lawns with pavilions, 2 cricket pitches, tennis court, basketball & a jogging track

### PARK UNDER DEVELOPMENT



CRICKET PITCH  
(2NOS.)



JOGGING  
TRACK



TENNIS COURT



BADMINTON COURT





## SMARTER GREENS

Smart maintenance technologies like **DRIP IRRIGATION AND SPRINKLERS** aided maintenance of green spaces have been incorporated across the parks which is not only energy efficient but also environmentally friendly.

Branded **EPDM SPORTS FLOORING** and **EQUIPMENT'S IMPORTED FROM KOCHI OF SOUTH KOREA** have been installed to make it an even safer environment for your child to play & grow.

**OVER 2000 TREES PLANTED ACROSS THE TOWNSHIP**

## EFFICIENT SECURITY

All entry/exit points of the township shall be manned round the clock and equipped with **CCTV CAMERA SYSTEMS** which would be directly monitored from a central security centre. **VIDEO DOOR PHONES IN EACH APARTMENTS, BY GODREJ**, act as a 3rd layer of security.



## CONCRETE ROADS & EFFICIENT LIGHTING

All **INTERNAL ROADS HAVE BEEN DEVELOPED USING CONCRETE**. Paved pathways with layered greens provided for pedestrians. Street lighting has been designed to have maximum coverage to enhance the security and the aesthetic appeal of the township.



## CENTRAL LOCATION

All major schools such as Shiv Nadar, DPS, Manav Rachna, DAV, Aravali and more are a stone's throw away (3 km. approx.). Convenient shopping centres like Next Door, KLJ shopping complex are within walking distance and others like Vipul Plaza, World Street etc. are 3 just kms away. Amrita institute of medical sciences a 2000+ bed, state of the art, Mega Hospital is under construction nearby and shall cater to all medical needs of the residents soon.

# GROUND FLOOR PLAN

190 SQYDS (BUILT UP AREA = 1103 SQ.FT.)



# TYPICAL FIRST/SECOND FLOOR PLAN

190 SQYDS (BUILT UP AREA = 1103 SQ.FT.)



# GROUND FLOOR PLAN

250 SQYDS (BUILT UP AREA = 1382 SQ.FT.)



# TYPICAL FIRST/SECOND FLOOR PLAN

250 SQYDS (BUILT UP AREA = 1382 SQ.FT.)



# GROUND FLOOR PLAN

350 SQYDS (BUILT UP AREA = 1803 SQ.FT.)



(1SQ.FT. = 0.092 SQ.MT.)

# TYPICAL FIRST/SECOND FLOOR PLAN

350 SQYDS (BUILT UP AREA = 1803 SQ.FT.)



# SPECIFICATION

## LIVING/DINING

Wall Finish :  
Painted in pleasing shades of plastic emulsion paint

Flooring :  
Vitrified tiles

## BEDROOMS

Wall Finish :  
Painted in pleasing shades of plastic emulsion paint

Flooring :  
Laminated wooden flooring

## BATHROOMS

Flooring :  
Ceramic tiles

Dado :  
Select ceramic tiles

Fixtures & Fittings :  
White sanitary ware, and contemporary chrome plated fittings

## KITCHEN

Flooring :  
Vitrified tiles

Dado :  
Ceramic tiles up to 2 ft. above working platform and the rest painted in pleasing shades of plastic paint

Platform :  
Granite counter with single bowl stainless steel sink and drain board

## BALCONY

Flooring :  
Anti Skid Ceramic Tiles

## STAIRCASE

Flooring :  
Selected Marble

## DOORS & WINDOWS

Doors :  
Seasoned hardwood frames with painted board shutters/Flush door with both side laminate

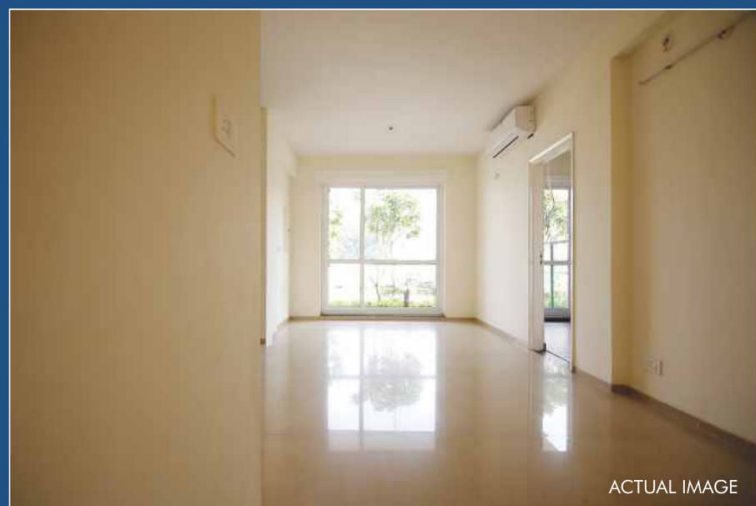
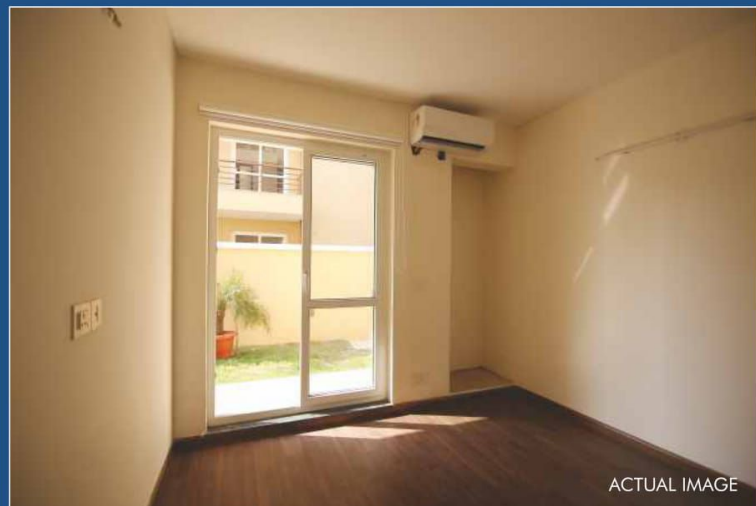
External Doors/Windows :  
UPVC

## FACILITIES

Electrical :  
Electrical copper wiring in concealed conduits for all light and power points

Video Door Phones :  
By Godrej

Adequate Power Back-up



\*Architects and the Developer reserve the right to alter the specifications and facilities for design improvement.





ARTISTIC IMPRESSION

## SANCTUARY CLUB

The state-of-the-art Club will be equipped with a host of amenities ranging from a Multi-cuisine restaurant, Triple height Courtyard seating areas, a coffee bar & library, grand lounge and reception, gymnasium, card room, mini theatre, kids room, yoga studio, banquet hall, games room, TT & Billiards, a party terrace, swimming pool and kids pool with changing rooms.



ARTISTIC IMPRESSION



ARTISTIC IMPRESSION



ARTISTIC IMPRESSION



ACTUAL IMAGE



ACTUAL IMAGE



ACTUAL IMAGE



ACTUAL IMAGE



ACTUAL IMAGE



ACTUAL IMAGE

## ABOUT US

Having delivered over 15900 units across Delhi-NCR, BPTP has been consistently working towards gratifying its customers. Over the past 15 years, with the launch of its flagship project "Parklands" in Faridabad and integrated luxury townships in Gurugram, BPTP has created a range of sustainable and recognized developments, such as Amstoria, Astaire Gardens, Pride to name a few.

**DELIVERED 4606 HOMES**

Since 2016 & Counting...

PRIDE  
*by*  
  
SECTOR 77, FARIDABAD