

Where **Business**
Comes



first



Disclaimer: The elevation is an artistic impression and subject to changes.



First from ATS

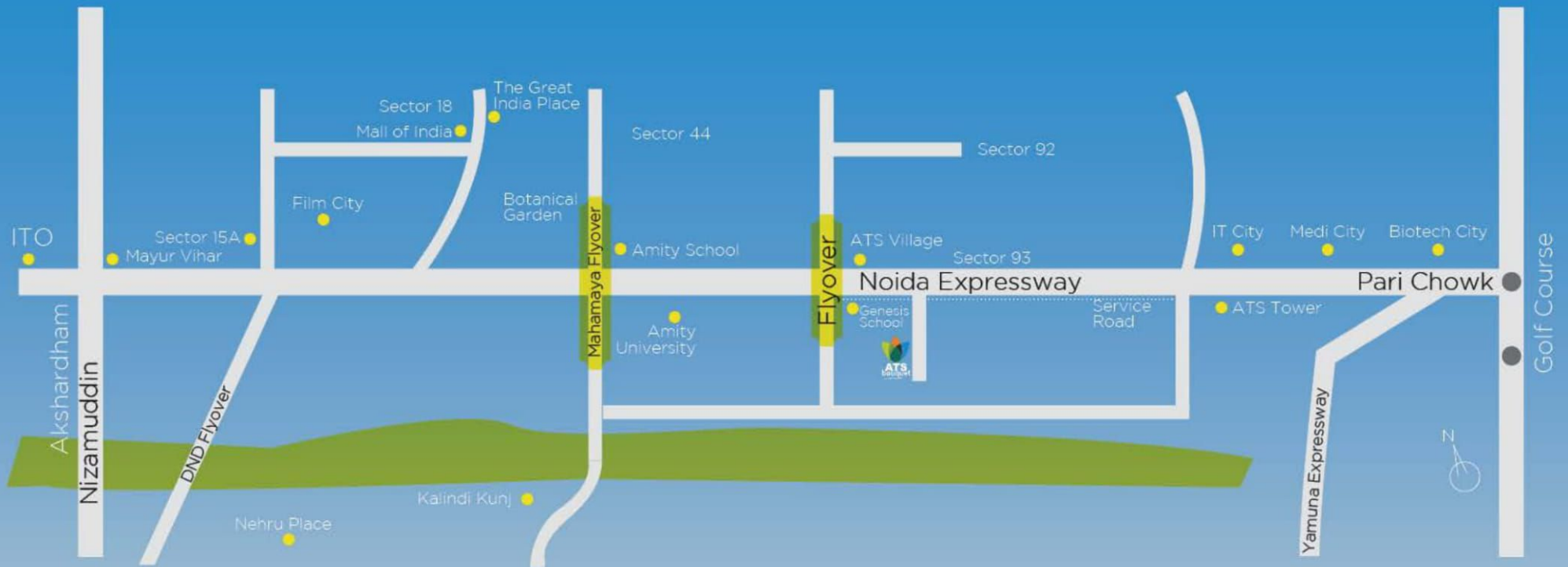
ATS has built a name for itself in real estate development that equals, indeed excels, the finest. A name built on the firm foundations of trust, transparency and demonstrated excellence. And one which has delivered project after project, appreciated widely for high quality of construction and timely completion. The focus on detail and quality has also helped ATS earn the reputation that ranks it among the country's most preferred developers.

And now the first ATS commercial venture for IT/ITeS is set to move your business forward, raise your reputation sky-high among your peers, among your clients and your customers. ATS Bouquet is the truly spectacular entry of ATS as a one-of-its-kind office and retail complex. Capturing this nugget of a property are three towers situated in Sector 132, the heart of the commercial hub on Noida Expressway.



Disclaimer: The elevation is an artistic impression and subject to changes.

Location Map



Map not to scale

Site Map



NOTE: The site plan shown is tentative. The overall layout may vary because of statutory/ design reasons. For updated layout plan, please contact sales team.

Special features & services

- Flexible office spaces
- Sustainable green building design
- Provision of air-conditioning in office spaces with central system on adequate diversity factor, fresh air provision in common area/corridors
- Ground floor entrance lobby with state-of-the-art interiors
- Landscaped terraces/rooftops
- Adequate capacity high-speed passenger lifts
- Premium external finish with mix of glazing, aluminium panelling, stone & exterior paint as per architect
- Automatic fire suppression and detection system
- Fresh air provision in common area/corridors
- Wi-Fi enabled office spaces
- Security system with access control, CCTV in common areas
- Adequate provision of space for car parking
- Easy access to proposed amenities like multi-cuisine restaurant/coffee shops, business centre, open food kiosk, convenient shopping, etc. in IT/ITeS facility block

Floor Layout



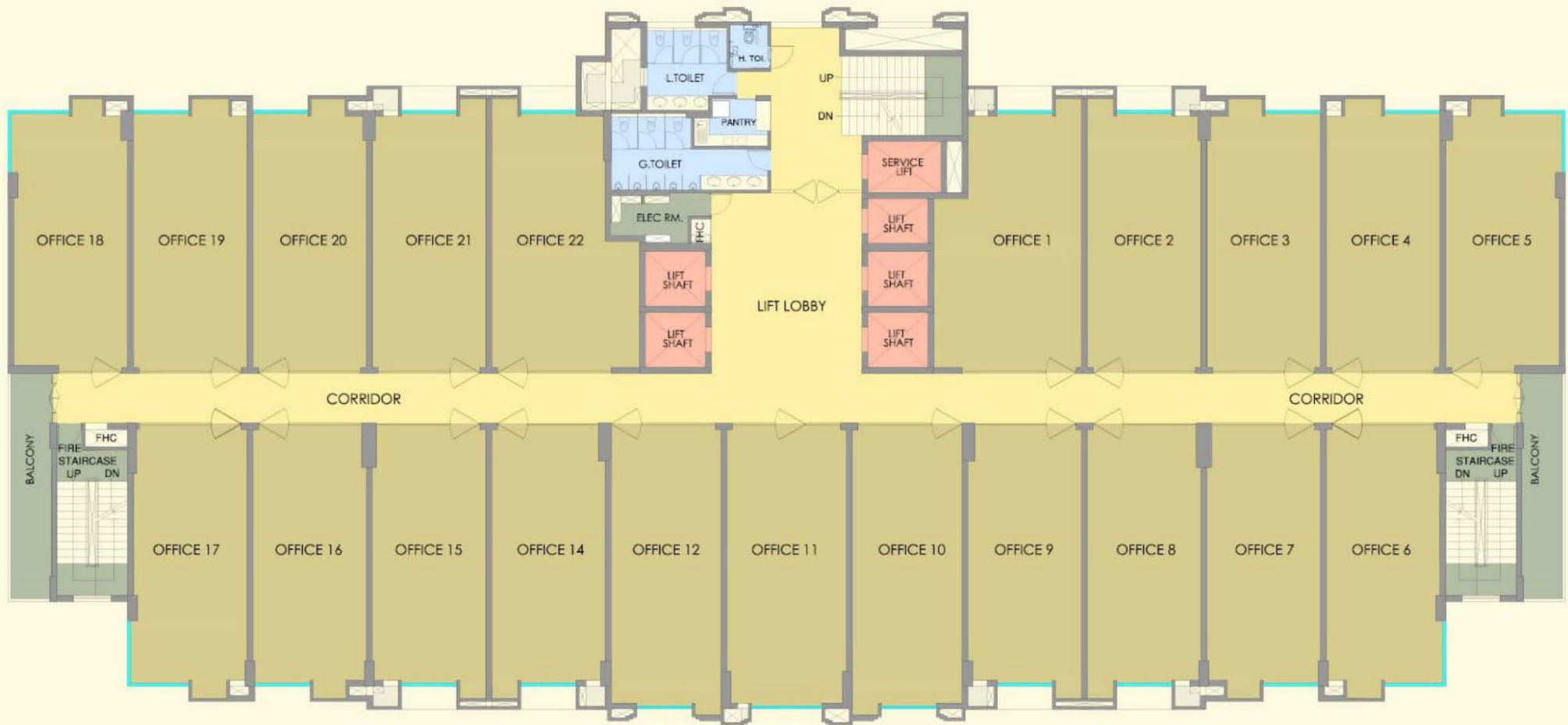
Retail Ground Floor Plan



Retail First Floor Plan



Retail Second Floor Plan

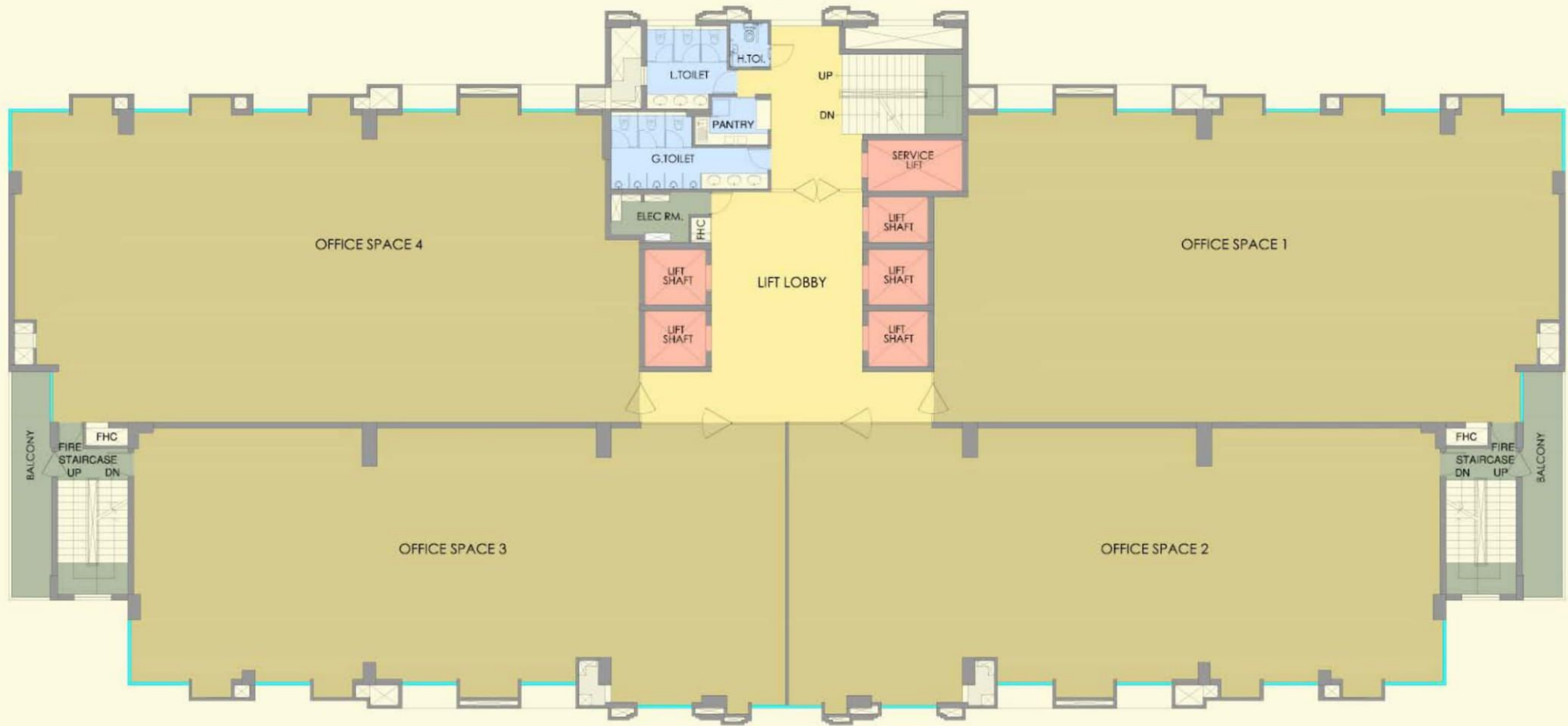


TOWER-A:TYPICAL FLOOR PLAN

Tower-A: Typical Floor Plan



Tower-B: Typical Floor Plan



Tower-C: Typical Floor Plan



Disclaimer. The elevation is an artistic impression and subject to changes.



SPECIFICATIONS

FINISHES	<ul style="list-style-type: none">● Granite/imported marble/equivalent material in entrance lobby● Vitrified tiles/granite or equivalent in lift lobbies/common corridor● IPS/kota stone in service lift lobby/basement lift lobby & staircase● Ceramic anti-skid tiles in common toilets● Office bare shell with plastered walls
EXTERIOR	Appropriate finish with mix of glazing, stone & external grade paint
PLUMBING	As per standard practice, all internal plumbing in GI/CPVC/Composite. All external in CI/UPVC. Automated irrigation system
TOILET	Premium sanitary fixtures & all chrome plated fittings
HVAC	Provision of air-conditioning in office spaces with central system on adequate diversity factor. Fresh air provision in common area/corridors
LIFT	Adequate capacity high speed lifts
GENERATORS	DG power backup with suitable diversity
SECURITY & FTT	Provision for optical fibre network; video surveillance system, perimeter security and entrance lobby Security with CCTV cameras; fire prevention, suppression, detection & alarm system as per fire norms

Disclaimer: ATS reserves its right to change area & specifications without any prior notice.

DELIVERED PROJECTS



ATS GREENS I

Sector- 50, Noida



ATS GREENS II

Sector- 50, Noida



ATS VILLAGE

Noida, Sector 93A, On Expressway



ATS ONE HAMLET

Sector 104, Noida



PARADISO

Sector Chi-04, Greater Noida



Phase I & II, Indirapuram



Indirapuram, Ghaziabad



Dera Bassi, Punjab



Sector 109, Gurgaon



Dera Bassi, Barwala Rd., Punjab



Sector 150, Sports City, Noida Expressway

ONGOING PROJECTS



Sector-121, Mohali



Sector 124, Noida



Sector 150, Noida



Zeta 1, Greater Noida



Sector 150, Sports City, NOIDA Expressway



Sector 22 D, Yamuna Expressway



Triumph
an ATS home

Dwarka Expressway, Sector 104



Taormaline
an ATS home

Sector-109, Gurgaon



MARIGOLD
an ATS home

Sector 89 A,
Dwarka Expressway, Gurgaon



Heavenly
Foothills
an ATS development

Sahastradhara Road, Dehradun



Pristine II
an ATS home

Sector 150, Sports City,
Noida Expressway



ATS GOLF MEADOWS
A TOUCH OF CLASSY LUXURY & LIFESTYLE

Dera Bassi, Punjab



ATS
bouquet
an ATS home

Sector 132, Noida Exressway



PICTURESQUE
REPRIEVES
an ATS home

Sector-152, Noida Expressway



RHAPSODY
an ATS home

Sector-1, Greater Noida West



KINGHOOD DRIVE
an ATS home

Sector-152, Noida Expressway



PRAGYA
an ATS home

Gift City - SEZ, Gujarat

UPCOMING PROJECTS



Sector-152, Noida Expressway



Sector-99A, Dwarka Expressway



Sector-22D, Yamuna Expressway



Sector-152, Noida Expressway

ABOUT US

Assurance, Transparency and Sincerity spell ATS. A real estate developer of concepts based on consumer insight and architectural delight, the group is responsible for creating some of the most premium residential and commercial spaces primarily in North India. All projects bear testimony to a commitment towards timely delivery and attention to specifics. Quality being a given.



Disclaimer: The information available in this advertisement is subject to change without any notice. While every effort has been made to provide the details, particulars, contents and other graphics appearances in this advertisement as updated, correct, complete and accurate, nevertheless, inadvertent errors may occur in the information. The Developer and its directors, authorized agents and employees makes no warranties or representations whatsoever regarding the quality, contents, completeness, suitability, adequacy, sequence, accuracy or timeliness of the information and data, including all implied warranties and conditions of merchantability, fitness for any particular purpose, title and non-infringement. In no event the Developer and its directors, authorized agents and employees shall be liable for any damage including, without limitation to, direct, incidental or consequential damages or loss arising out of this advertisement or with respect to any materials contained in this advertisement. The developer makes no warranty, express or implied, nor assumes any legal liability or responsibility for the accuracy, correctness, completeness or use of any information contained herein, nor represents that its use would not infringe on privately owned rights. The Buyer/Customers will be receiving the property "as is", that is, with all defects which may exist, if any, except as otherwise provided in the real estate Purchase Contract. The Buyer/Customers are required to make independent verification to his/her satisfaction. This information is intended to provide a general understanding of the subject matter and to help you assess whether you need more detailed information. Developer may change, delete, add to, or otherwise amend information contained here as per prevailing government norms without notice. #1sq.mtr = 10.764sq.ft , 1 sq.mtr = 1.19599 sq.yards. *T&C apply



ATS DREAMZONE PRIVATE LIMITED

Site Address: Plot No. A-2/2, Sector 132, Noida Expressway

RERA Registration No.: UPRERAPRJ2612