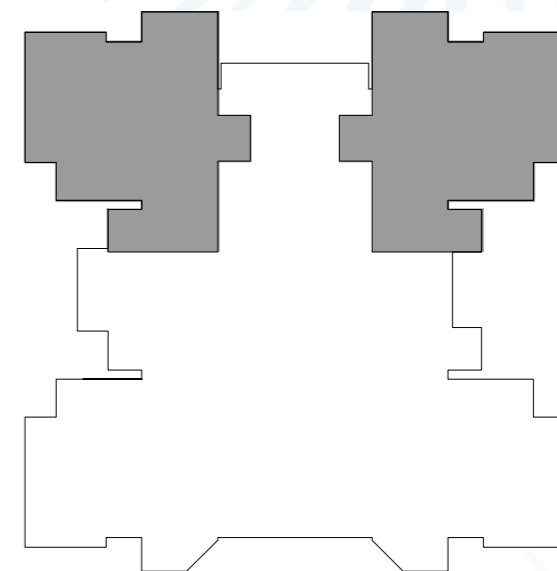
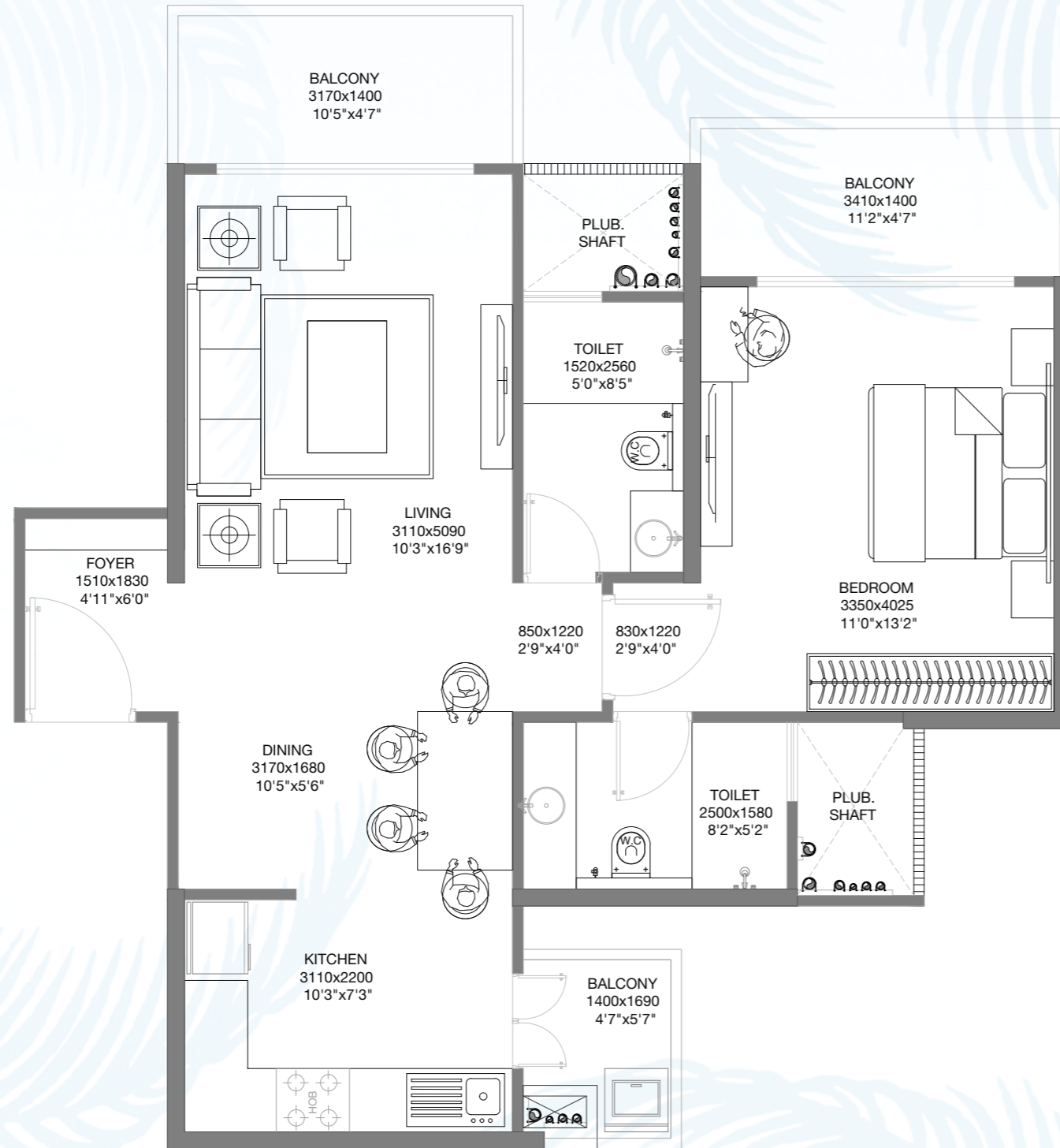


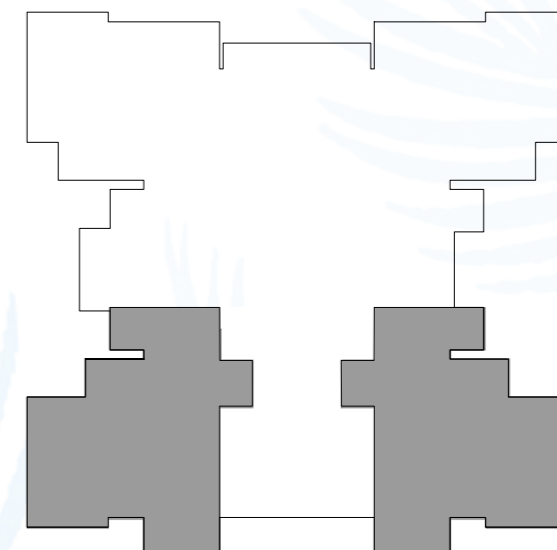
# GODREJ PALM RETREAT

## SECTOR 150, NOIDA

1 BHK  
 CARPET AREA = 55.81 SQ. M.  
 BALCONY AREA = 11.22 SQ. M.  
 TOTAL AREA = 67.03 SQ. M.



GROUND FLOOR PLAN  
TOWER - A3, B3



FIRST FLOOR PLAN  
TOWER - A3, B3

RERA REGISTRATION: Godrej Palm Retreat 1 - UPRERAPRJ745601, Godrej Palm Retreat 2 - UPRERAPRJ124632 - [www.up-rera.in](http://www.up-rera.in). NOIDA/M.V.N/2019/IV-1485/1121 dated 15.05.2019.

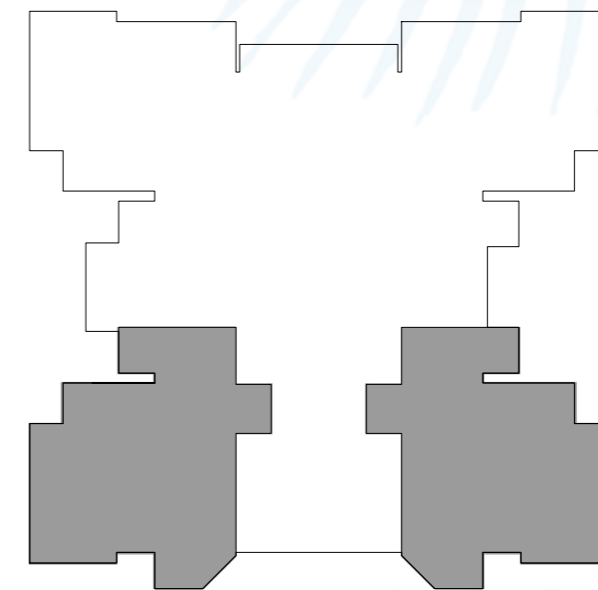
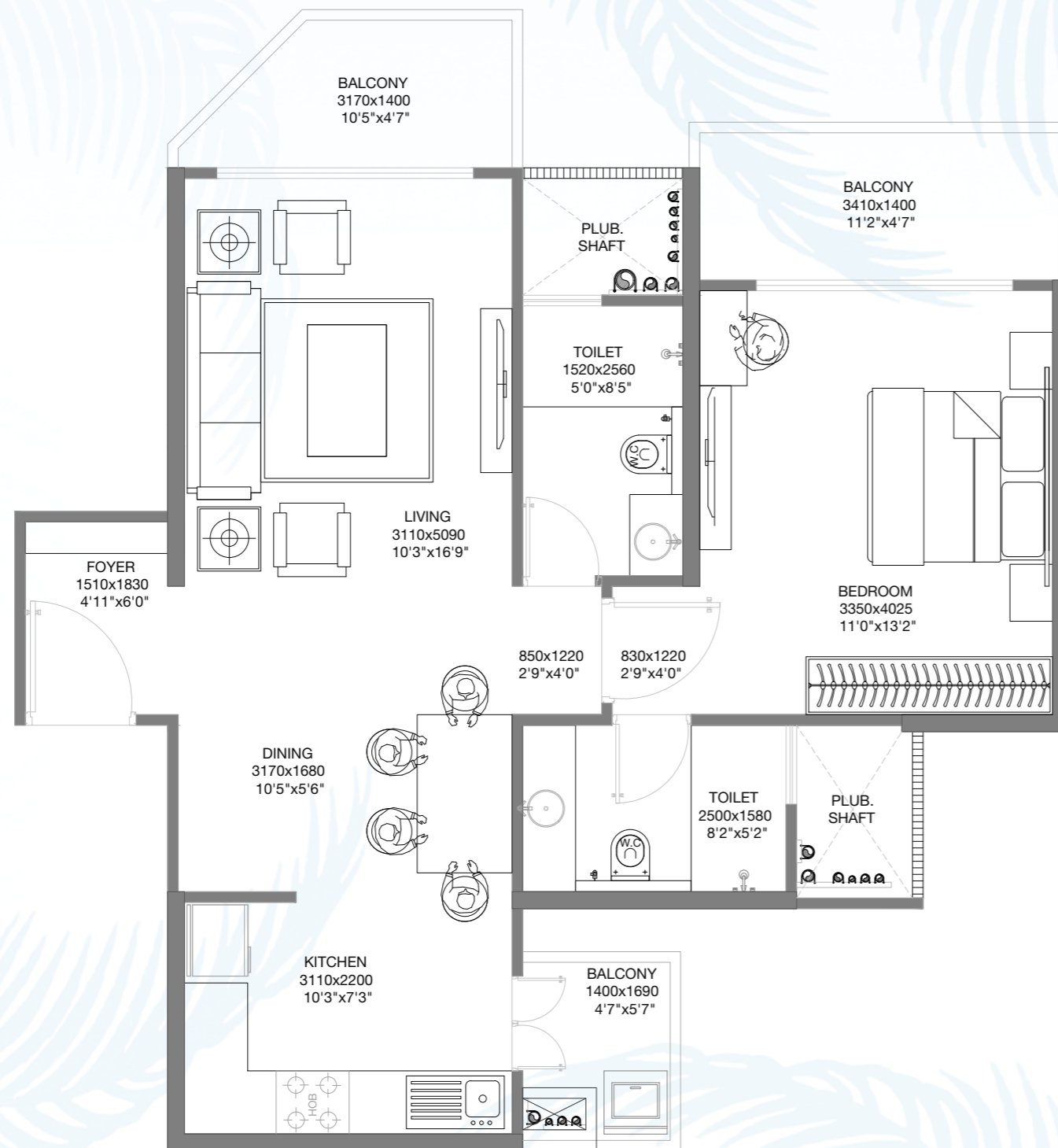
This contains artistic impressions and no warranty is expressly or impliedly given that the completed development will comply in any degree with such artist's impression as depicted. The furniture, accessories, paintings, items, electronic goods, fittings/ fixtures, decorative, false ceiling including finishing materials, specifications, shades, sizes etc shown in the pictures are only indicative in nature and for illustrative purpose only & does not form a part of the standard specification. Project is being developed by ACE Infracity Developers Pvt. Ltd. ("Developer") and has appointed Godrej Projects Development Limited as the Development Manager for the same. Recipients are advised to apprise themselves of the necessary and relevant information of the project/offer prior to making any purchase decisions. The sale is subject to terms of application form and agreement for sale/sub-lease. All specifications of the unit shall be as per the final agreement between the Parties. Recipients are advised to apprise themselves of the necessary and relevant information of the project prior to making any purchase decisions. Govt charges/lease rent/applicable taxes extra. The details shown in the image are only indicative in nature and are only for the purpose of illustrating/indicating a possible layout and do not form part of the standard specifications/amenities/services to be provided in the flat. The official website of Godrej Properties Ltd. is [www.godrejproperties.com](http://www.godrejproperties.com). Please do not rely on the information provided on any other website/marketing material.

1 SQ. M. = 10.764 SQ. FT.

# GODREJ PALM RETREAT

## SECTOR 150, NOIDA

1 BHK  
 CARPET AREA = 55.81 SQ. M.  
 BALCONY AREA = 11.22 SQ. M.  
 TOTAL AREA = 67.03 SQ. M.



GROUND FLOOR PLAN  
TOWER - A3, B3

RERA REGISTRATION: Godrej Palm Retreat 1 - UPRERAPRJ745601, Godrej Palm Retreat 2 - UPRERAPRJ124632 - [www.up-rera.in](http://www.up-rera.in). NOIDA/M.V.N/2019/IV-1485/1121 dated 15.05.2019.

This contains artistic impressions and no warranty is expressly or impliedly given that the completed development will comply in any degree with such artist's impression as depicted. The furniture, accessories, paintings, items, electronic goods, fittings/ fixtures, decorative, false ceiling including finishing materials, specifications, shades, sizes etc shown in the pictures are only indicative in nature and for illustrative purpose only & does not form a part of the standard specification. Project is being developed by ACE Infracity Developers Pvt. Ltd. ("Developer") and has appointed Godrej Projects Development Limited as the Development Manager for the same. Recipients are advised to apprise themselves of the necessary and relevant information of the project/offer prior to making any purchase decisions. The sale is subject to terms of application form and agreement for sale/sub-lease. All specifications of the unit shall be as per the final agreement between the Parties. Recipients are advised to apprise themselves of the necessary and relevant information of the project prior to making any purchase decisions. Govt charges/lease rent/applicable taxes extra. The details shown in the image are only indicative in nature and are only for the purpose of illustrating/indicating a possible layout and do not form part of the standard specifications/amenities/services to be provided in the flat. The official website of Godrej Properties Ltd. is [www.godrejproperties.com](http://www.godrejproperties.com). Please do not rely on the information provided on any other website/marketing material.

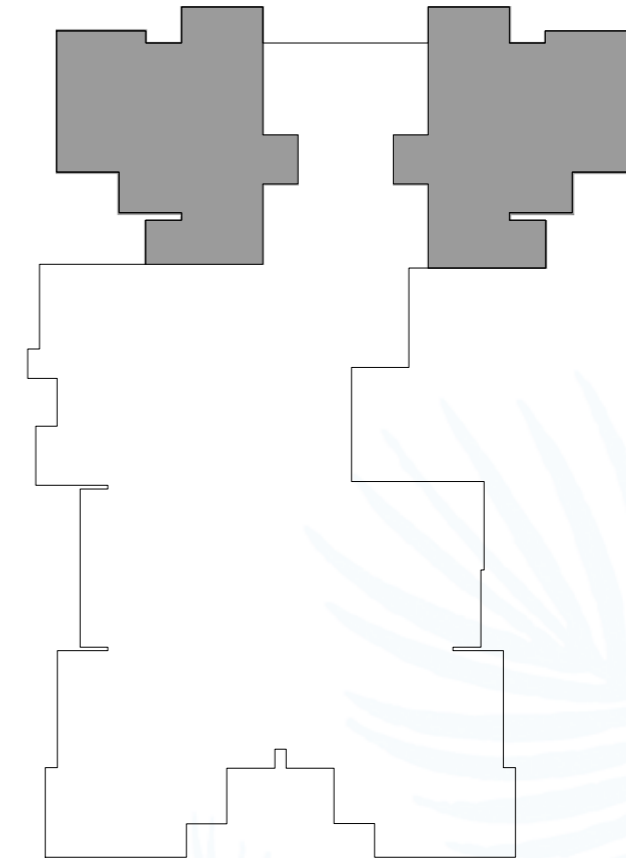
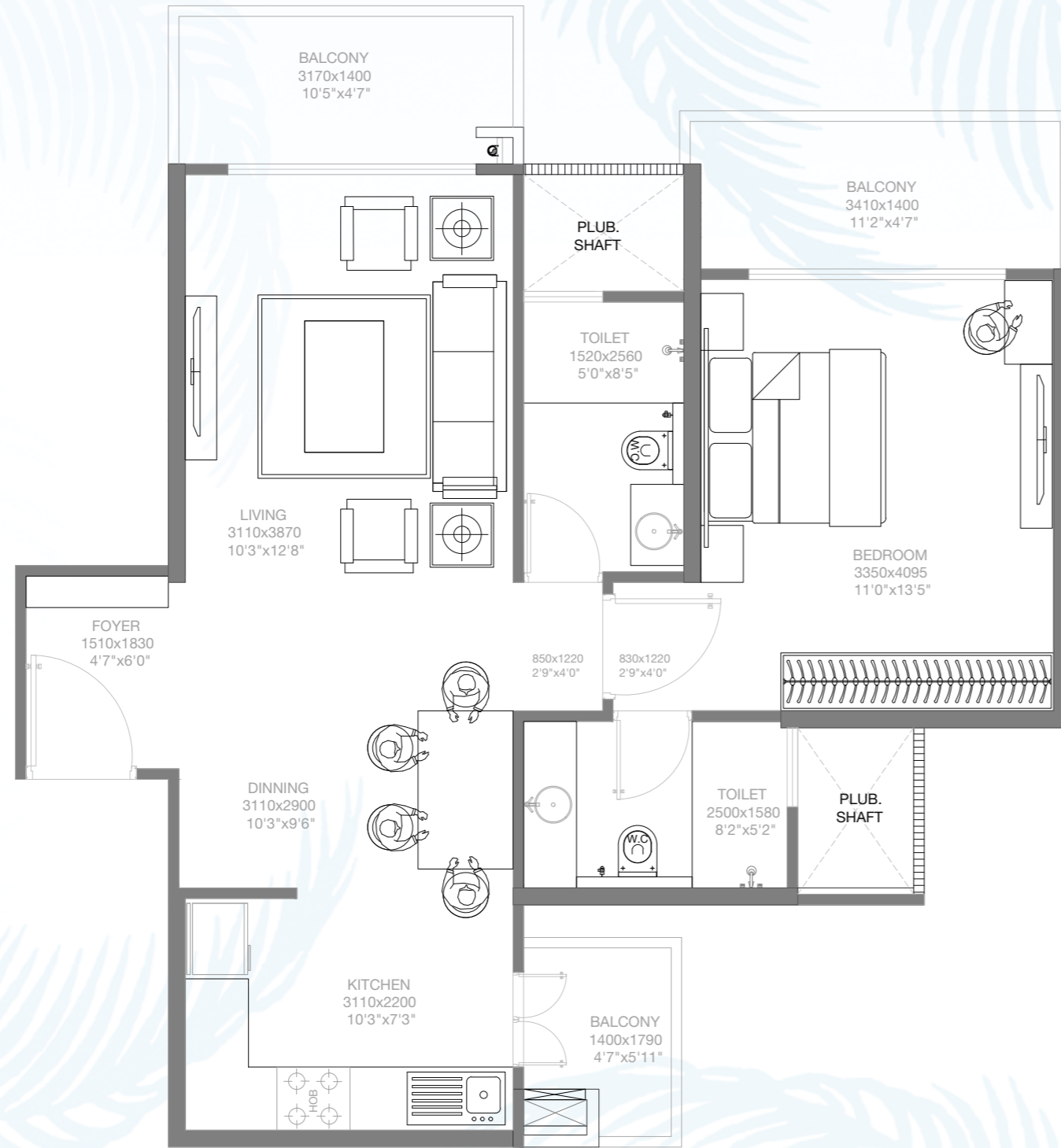
1 SQ. M. = 10.764 SQ. FT.



# GODREJ PALM RETREAT

## SECTOR 150, NOIDA

1 BHK  
 CARPET AREA = 56.02 SQ. M.  
 BALCONY AREA = 11.28 SQ. M.  
 TOTAL AREA = 67.30 SQ. M.



FIRST FLOOR PLAN  
 TOWER - A4, B2

RERA REGISTRATION: Godrej Palm Retreat 1 - UPRERAPRJ745601, Godrej Palm Retreat 2 - UPRERAPRJ124632 - [www.up-rera.in](http://www.up-rera.in). NOIDA/M.V.N/2019/IV-1485/1121 dated 15.05.2019.

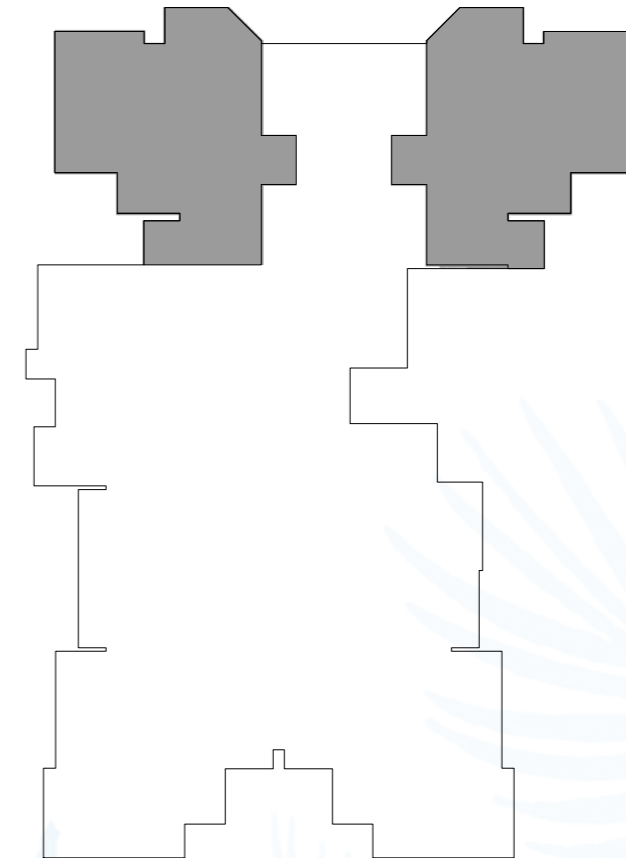
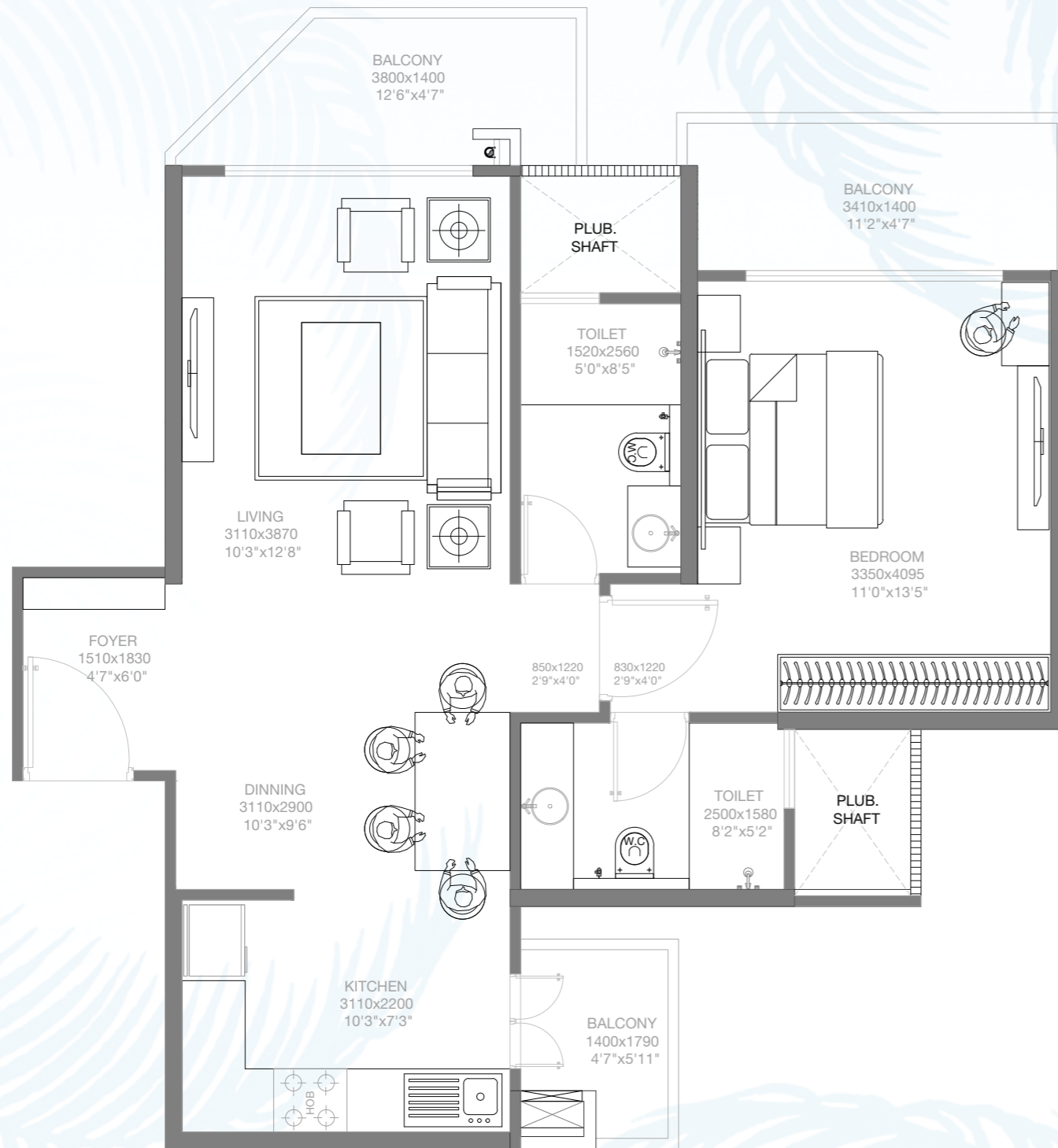
This contains artistic impressions and no warranty is expressly or impliedly given that the completed development will comply in any degree with such artist's impression as depicted. The furniture, accessories, paintings, items, electronic goods, fittings/ fixtures, decorative, false ceiling including finishing materials, specifications, shades, sizes etc shown in the pictures are only indicative in nature and for illustrative purpose only & does not form a part of the standard specification. Project is being developed by ACE Infracity Developers Pvt. Ltd. ("Developer") and has appointed Godrej Projects Development Limited as the Development Manager for the same. Recipients are advised to apprise themselves of the necessary and relevant information of the project/offer prior to making any purchase decisions. The sale is subject to terms of application form and agreement for sale/sub-lease. All specifications of the unit shall be as per the final agreement between the Parties. Recipients are advised to apprise themselves of the necessary and relevant information of the project prior to making any purchase decisions. Govt charges/lease rent/applicable taxes extra. The details shown in the image are only indicative in nature and are only for the purpose of illustrating/indicating a possible layout and do not form part of the standard specifications/amenities/services to be provided in the flat. The official website of Godrej Properties Ltd. is [www.godrejproperties.com](http://www.godrejproperties.com). Please do not rely on the information provided on any other website/marketing material.

1 SQ. M. = 10.764 SQ. FT.

# GODREJ PALM RETREAT

## SECTOR 150, NOIDA

1 BHK  
 CARPET AREA = 56.02 SQ. M.  
 BALCONY AREA = 11.28 SQ. M.  
 TOTAL AREA = 67.30 SQ. M.



**GROUND FLOOR PLAN  
 TOWER - A4, B2**

RERA REGISTRATION: Godrej Palm Retreat 1 - UPRERAPRJ745601, Godrej Palm Retreat 2 - UPRERAPRJ124632 - [www.up-rera.in](http://www.up-rera.in). NOIDA/M.V.N/2019/IV-1485/1121 dated 15.05.2019.

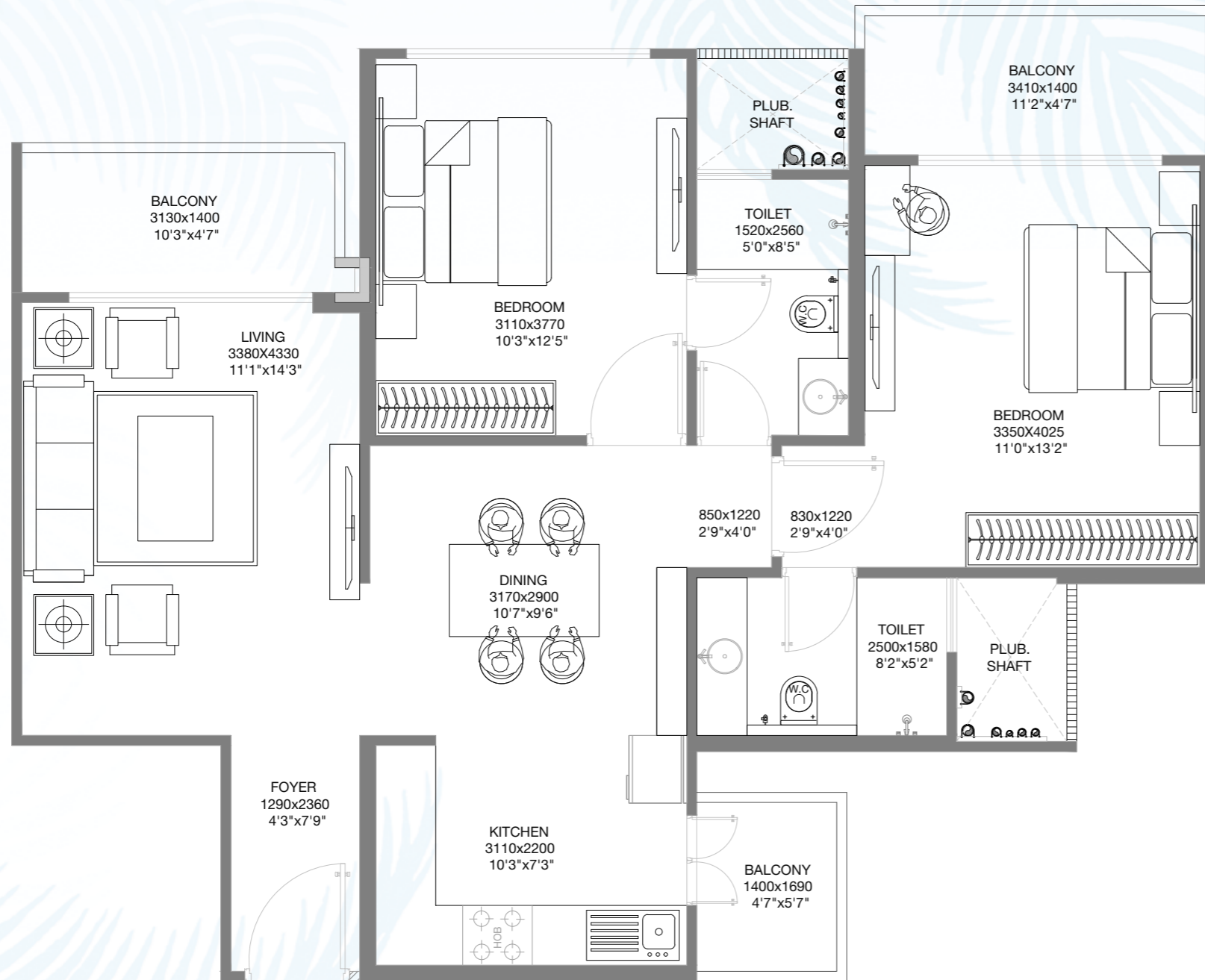
This contains artistic impressions and no warranty is expressly or impliedly given that the completed development will comply in any degree with such artist's impression as depicted. The furniture, accessories, paintings, items, electronic goods, fittings/ fixtures, decorative, false ceiling including finishing materials, specifications, shades, sizes etc shown in the pictures are only indicative in nature and for illustrative purpose only & does not form a part of the standard specification. Project is being developed by ACE Infracity Developers Pvt. Ltd. ("Developer") and has appointed Godrej Projects Development Limited as the Development Manager for the same. Recipients are advised to apprise themselves of the necessary and relevant information of the project/offer prior to making any purchase decisions. The sale is subject to terms of application form and agreement for sale/sub-lease. All specifications of the unit shall be as per the final agreement between the Parties. Recipients are advised to apprise themselves of the necessary and relevant information of the project prior to making any purchase decisions. Govt charges/lease rent/applicable taxes extra. The details shown in the image are only indicative in nature and are only for the purpose of illustrating/indicating a possible layout and do not form part of the standard specifications/amenities/services to be provided in the flat. The official website of Godrej Properties Ltd. is [www.godrejproperties.com](http://www.godrejproperties.com). Please do not rely on the information provided on any other website/marketing material.

1 SQ. M. = 10.764 SQ. FT.

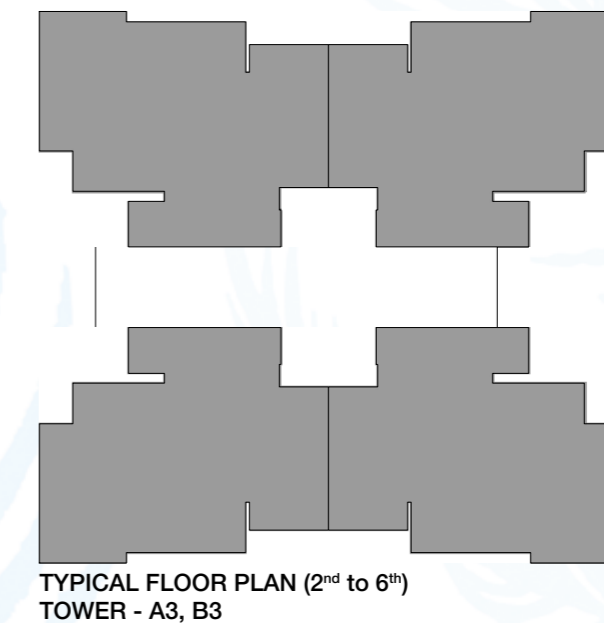
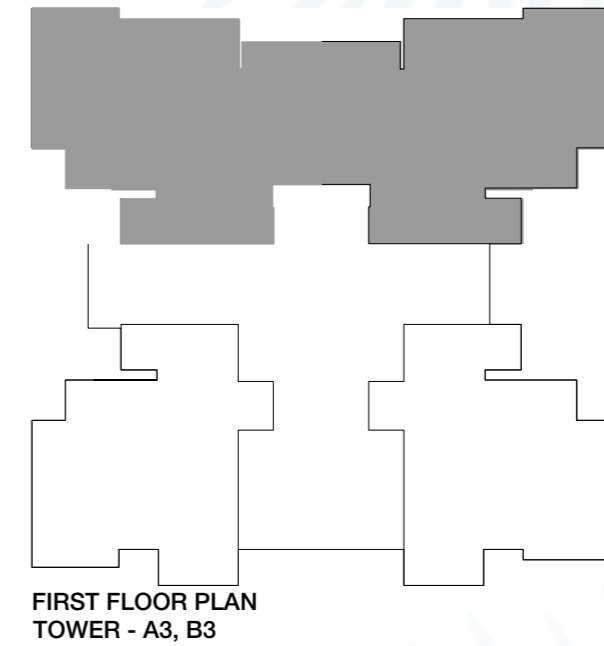


# GODREJ PALM RETREAT

## SECTOR 150, NOIDA



2 BHK  
 CARPET AREA = 71.62 SQ. M.  
 BALCONY AREA = 11.47 SQ. M.  
 TOTAL AREA = 83.09 SQ. M.



RERA REGISTRATION: Godrej Palm Retreat 1 - UPRERAPRJ745601, Godrej Palm Retreat 2 - UPRERAPRJ124632 - [www.up-rera.in](http://www.up-rera.in). NOIDA/M.V.N/2019/IV-1485/1121 dated 15.05.2019.

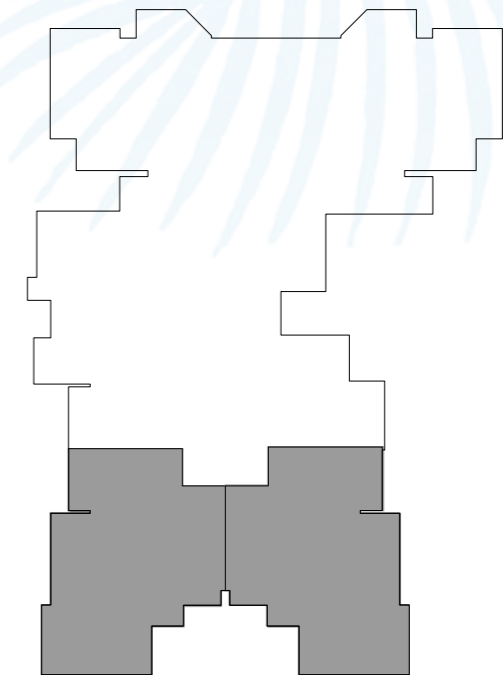
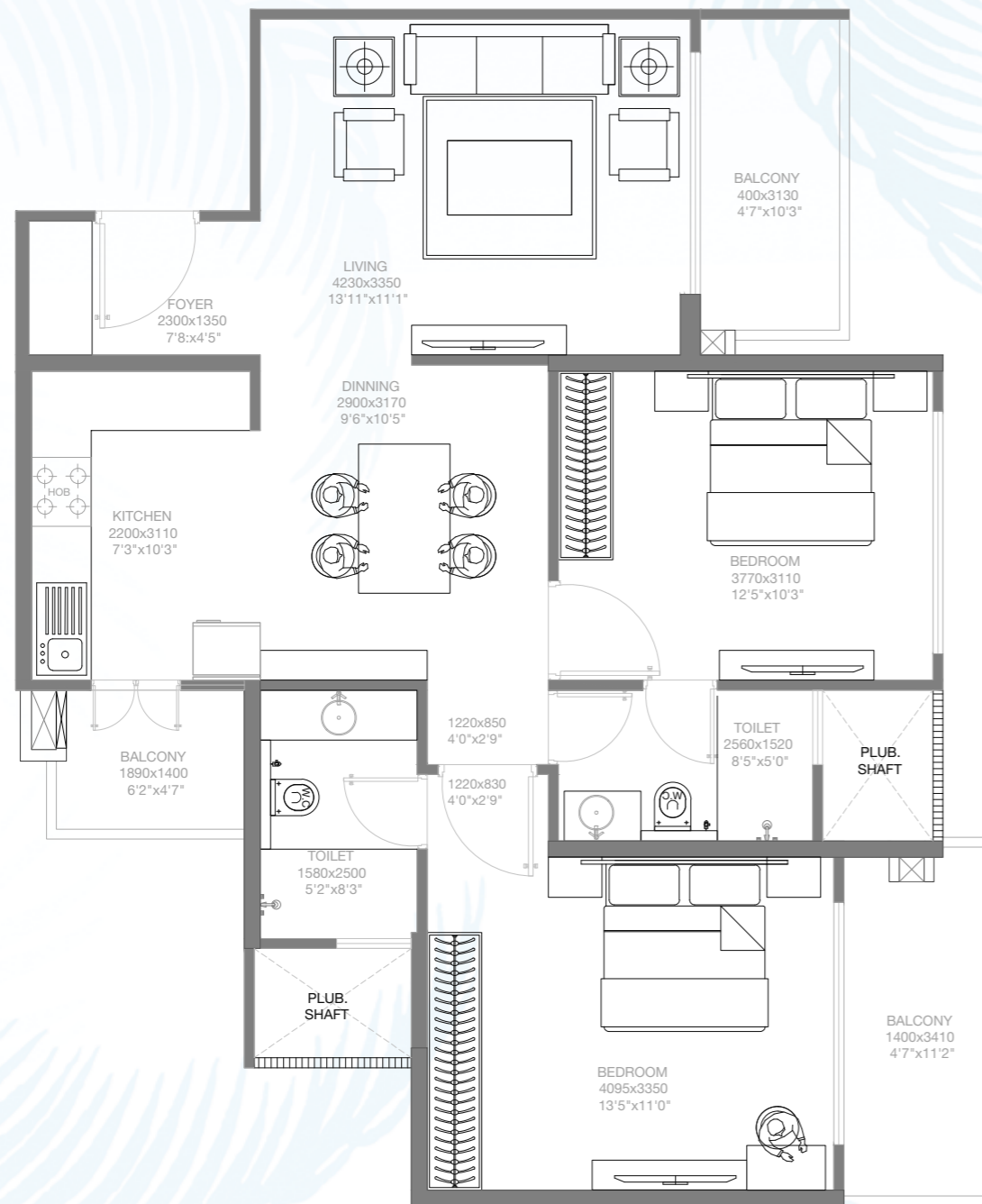
This contains artistic impressions and no warranty is expressly or impliedly given that the completed development will comply in any degree with such artist's impression as depicted. The furniture, accessories, paintings, items, electronic goods, fittings/ fixtures, decorative, false ceiling including finishing materials, specifications, shades, sizes etc shown in the pictures are only indicative in nature and for illustrative purpose only & does not form a part of the standard specification. Project is being developed by ACE Infracity Developers Pvt. Ltd. ("Developer") and has appointed Godrej Projects Development Limited as the Development Manager for the same. Recipients are advised to apprise themselves of the necessary and relevant information of the project/offer prior to making any purchase decisions. The sale is subject to terms of application form and agreement for sale/sub-lease. All specifications of the unit shall be as per the final agreement between the Parties. Recipients are advised to apprise themselves of the necessary and relevant information of the project prior to making any purchase decisions. Govt charges/lease rent/applicable taxes extra. The details shown in the image are only indicative in nature and are only for the purpose of illustrating/indicating a possible layout and do not form part of the standard specifications/amenities/services to be provided in the flat. The official website of Godrej Properties Ltd. is [www.godrejproperties.com](http://www.godrejproperties.com). Please do not rely on the information provided on any other website/marketing material.

1 SQ. M. = 10.764 SQ. FT.

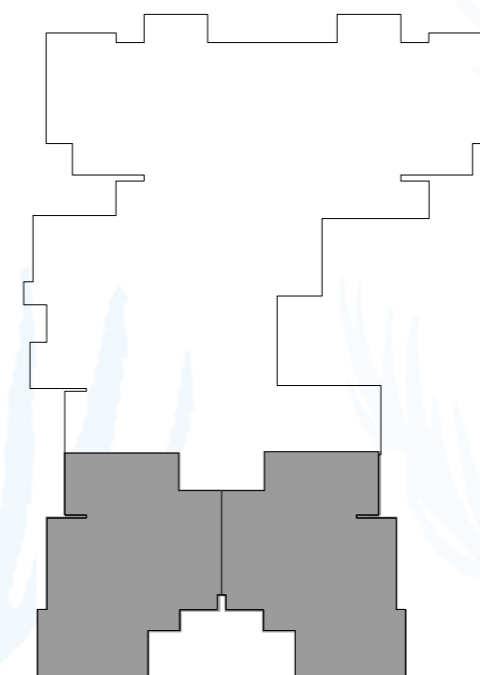
# GODREJ PALM RETREAT

## SECTOR 150, NOIDA

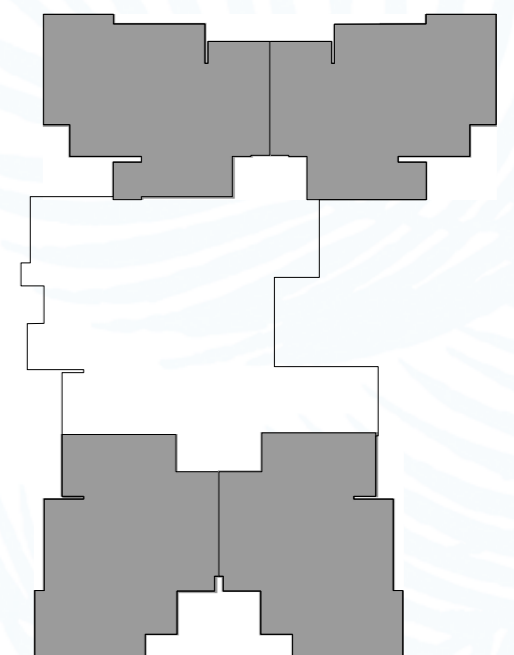
2 BHK  
 CARPET AREA = 71.84 SQ. M.  
 BALCONY AREA = 11.58 SQ. M.  
 TOTAL AREA = 83.42 SQ. M.



GROUND FLOOR PLAN  
TOWER - A4, B2



FIRST FLOOR PLAN  
TOWER - A4, B2



TYPICAL FLOOR PLAN (2<sup>nd</sup> to 6<sup>th</sup>)  
TOWER - A4, B2

RERA REGISTRATION: Godrej Palm Retreat 1 - UPRERAPRJ745601, Godrej Palm Retreat 2 - UPRERAPRJ124632 - [www.up-rera.in](http://www.up-rera.in). NOIDA/M.V.N/2019/IV-1485/1121 dated 15.05.2019.

This contains artistic impressions and no warranty is expressly or impliedly given that the completed development will comply in any degree with such artist's impression as depicted. The furniture, accessories, paintings, items, electronic goods, fittings/ fixtures, decorative, false ceiling including finishing materials, specifications, shades, sizes etc shown in the pictures are only indicative in nature and for illustrative purpose only & does not form a part of the standard specification. Project is being developed by ACE Infracity Developers Pvt. Ltd. ("Developer") and has appointed Godrej Projects Development Limited as the Development Manager for the same. Recipients are advised to apprise themselves of the necessary and relevant information of the project/offer prior to making any purchase decisions. The sale is subject to terms of application form and agreement for sale/sub-lease. All specifications of the unit shall be as per the final agreement between the Parties. Recipients are advised to apprise themselves of the necessary and relevant information of the project prior to making any purchase decisions. Govt charges/lease rent/applicable taxes extra. The details shown in the image are only indicative in nature and are only for the purpose of illustrating/indicating a possible layout and do not form part of the standard specifications/amenities/services to be provided in the flat. The official website of Godrej Properties Ltd. is [www.godrejproperties.com](http://www.godrejproperties.com). Please do not rely on the information provided on any other website/marketing material.

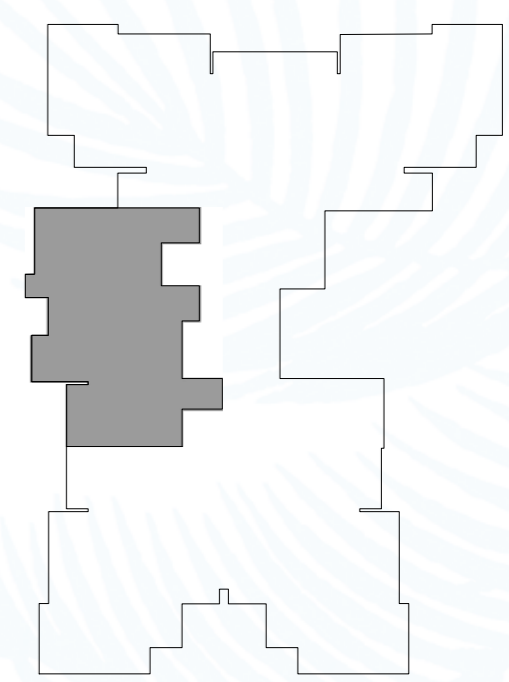
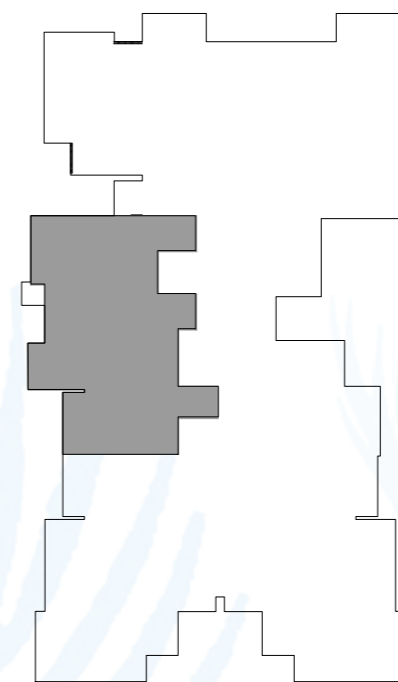
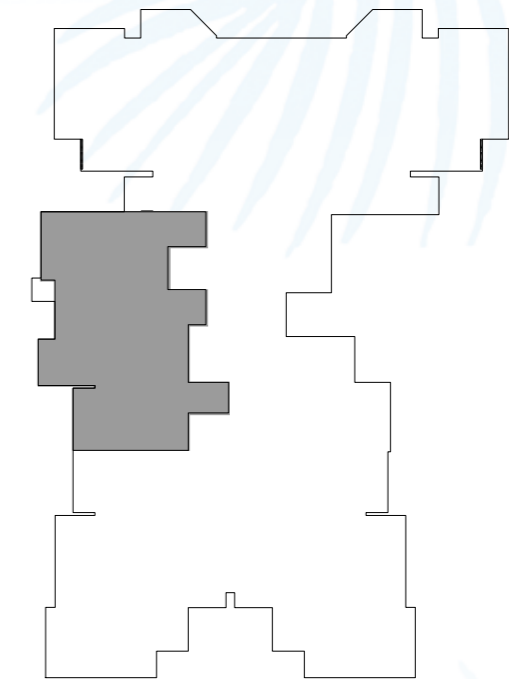
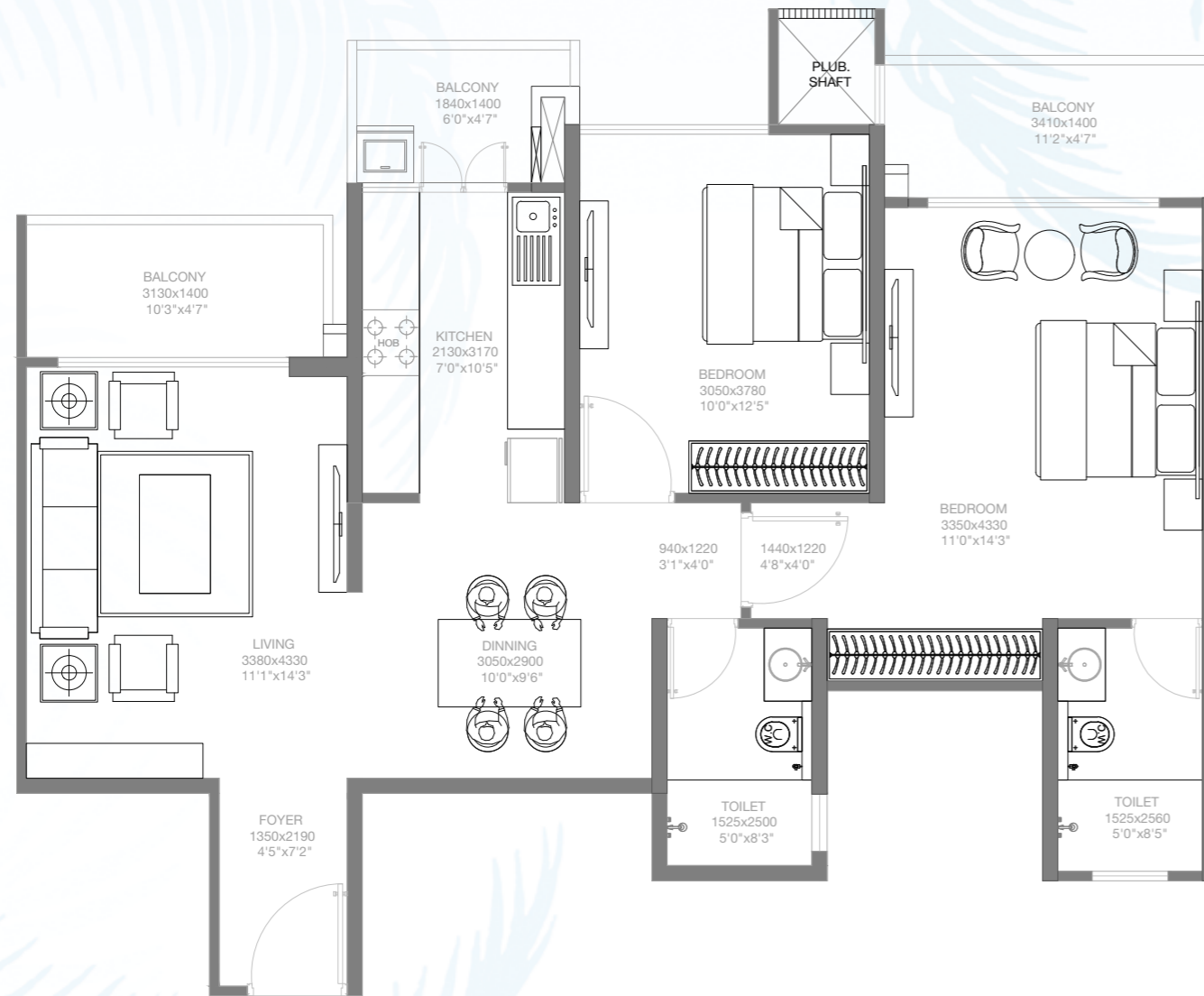
1 SQ. M. = 10.764 SQ. FT.



# GODREJ PALM RETREAT

## SECTOR 150, NOIDA

2 BHK  
 CARPET AREA = 74.37 SQ. M.  
 BALCONY AREA = 11.73 SQ. M.  
 TOTAL AREA = 86.10 SQ. M.



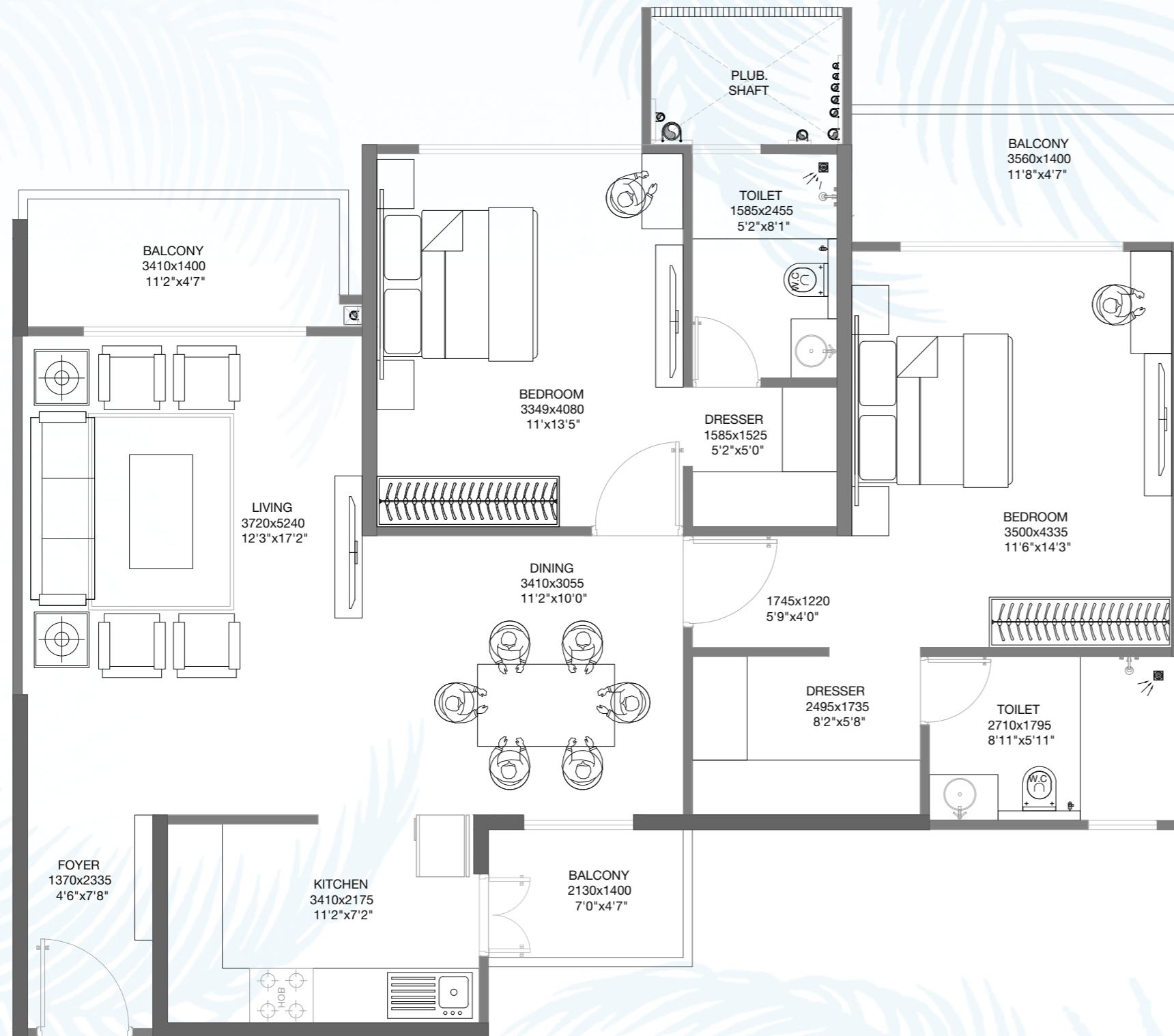
RERA REGISTRATION: Godrej Palm Retreat 1 - UPRERAPRJ745601, Godrej Palm Retreat 2 - UPRERAPRJ124632 - [www.up-rera.in](http://www.up-rera.in). NOIDA/M.V.N/2019/IV-1485/1121 dated 15.05.2019.

This contains artistic impressions and no warranty is expressly or impliedly given that the completed development will comply in any degree with such artist's impression as depicted. The furniture, accessories, paintings, items, electronic goods, fittings/ fixtures, decorative, false ceiling including finishing materials, specifications, shades, sizes etc shown in the pictures are only indicative in nature and for illustrative purpose only & does not form a part of the standard specification. Project is being developed by ACE Infracity Developers Pvt. Ltd. ("Developer") and has appointed Godrej Projects Development Limited as the Development Manager for the same. Recipients are advised to apprise themselves of the necessary and relevant information of the project/offer prior to making any purchase decisions. The sale is subject to terms of application form and agreement for sale/sub-lease. All specifications of the unit shall be as per the final agreement between the Parties. Recipients are advised to apprise themselves of the necessary and relevant information of the project prior to making any purchase decisions. Govt charges/lease rent/applicable taxes extra. The details shown in the image are only indicative in nature and are only for the purpose of illustrating/indicating a possible layout and do not form part of the standard specifications/amenities/services to be provided in the flat. The official website of Godrej Properties Ltd. is [www.godrejproperties.com](http://www.godrejproperties.com). Please do not rely on the information provided on any other website/marketing material.

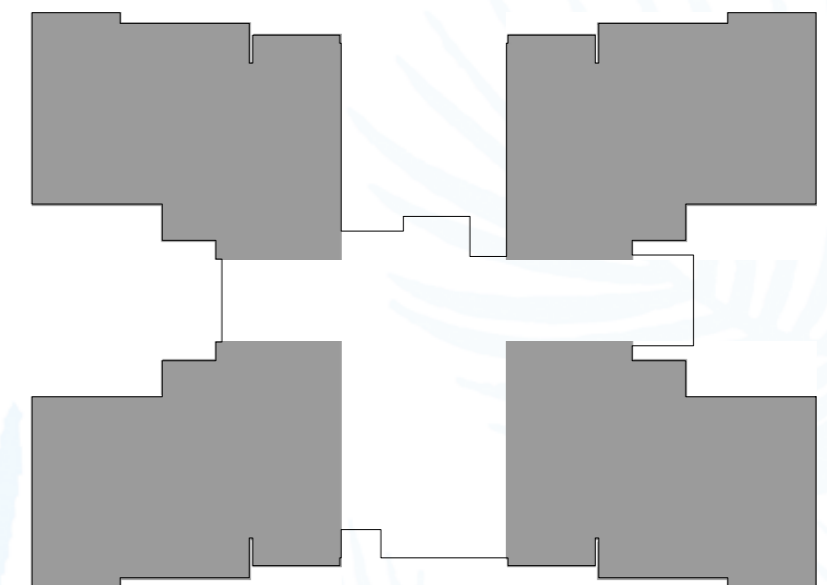
1 SQ. M. = 10.764 SQ. FT.

# GODREJ PALM RETREAT

## SECTOR 150, NOIDA



2 BHK  
 CARPET AREA = 90.81 SQ. M.  
 BALCONY AREA = 12.70 SQ. M.  
 TOTAL AREA = 103.51 SQ. M.



**GROUND FLOOR PLAN**  
 TOWER - A1, A5, B1, B5

RERA REGISTRATION: Godrej Palm Retreat 1 - UPRERAPRJ745601, Godrej Palm Retreat 2 - UPRERAPRJ124632 - [www.up-rera.in](http://www.up-rera.in). NOIDA/M.V.N/2019/IV-1485/1121 dated 15.05.2019.

This contains artistic impressions and no warranty is expressly or impliedly given that the completed development will comply in any degree with such artist's impression as depicted. The furniture, accessories, paintings, items, electronic goods, fittings/ fixtures, decorative, false ceiling including finishing materials, specifications, shades, sizes etc shown in the pictures are only indicative in nature and for illustrative purpose only & does not form a part of the standard specification. Project is being developed by ACE Infracity Developers Pvt. Ltd. ("Developer") and has appointed Godrej Projects Development Limited as the Development Manager for the same. Recipients are advised to apprise themselves of the necessary and relevant information of the project/offer prior to making any purchase decisions. The sale is subject to terms of application form and agreement for sale/sub-lease. All specifications of the unit shall be as per the final agreement between the Parties. Recipients are advised to apprise themselves of the necessary and relevant information of the project prior to making any purchase decisions. Govt charges/lease rent/applicable taxes extra. The details shown in the image are only indicative in nature and are only for the purpose of illustrating/indicating a possible layout and do not form part of the standard specifications/amenities/services to be provided in the flat. The official website of Godrej Properties Ltd. is [www.godrejproperties.com](http://www.godrejproperties.com). Please do not rely on the information provided on any other website/marketing material.

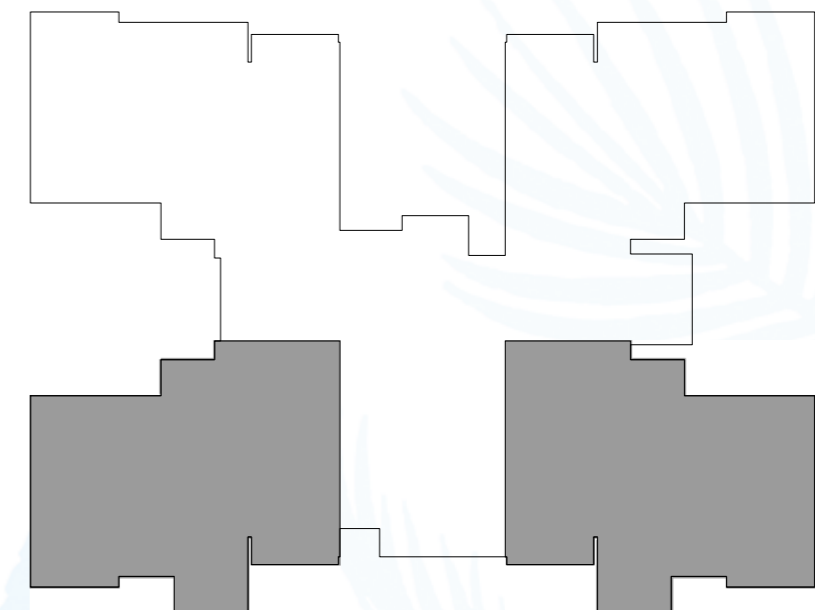
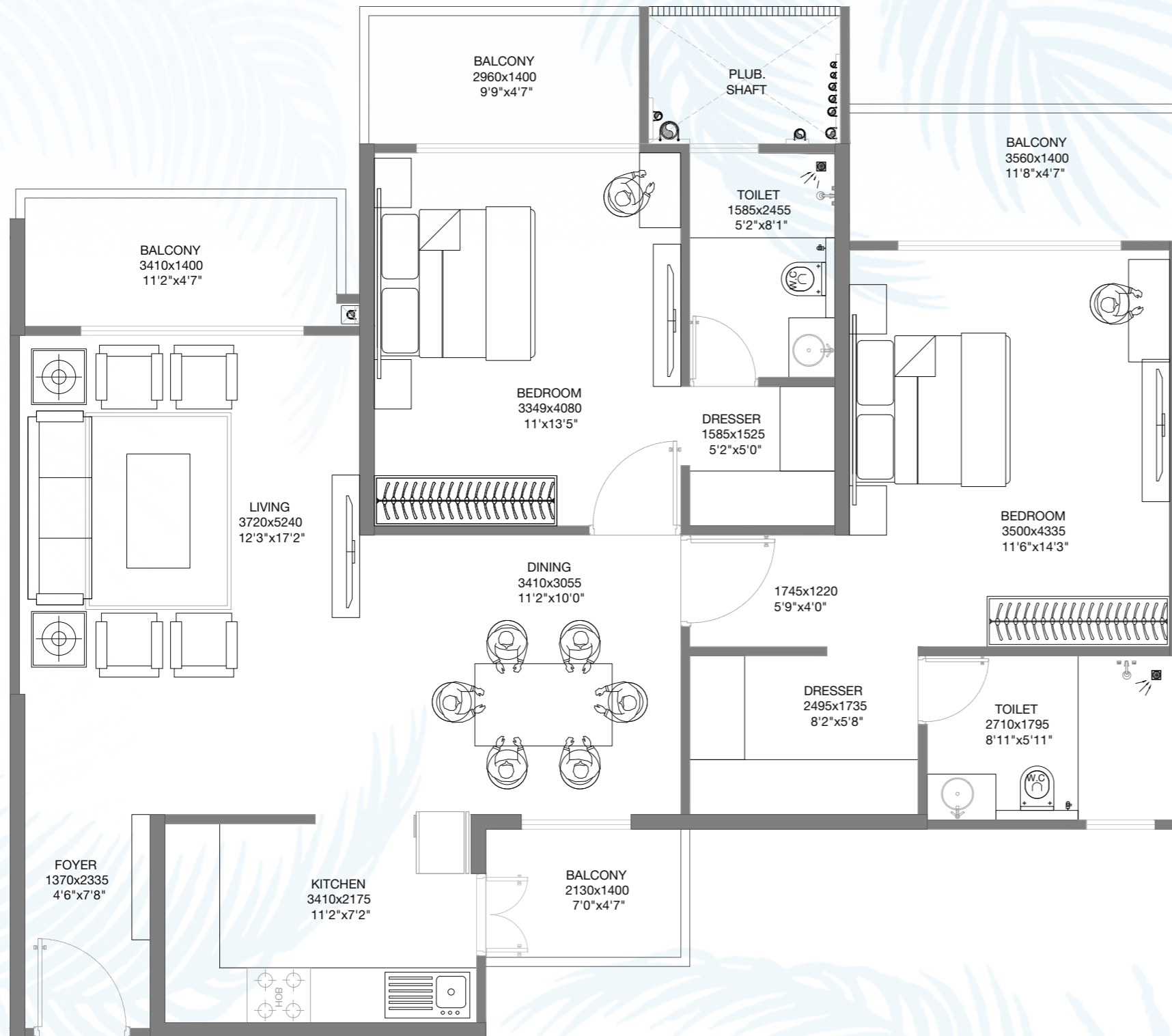
1 SQ. M. = 10.764 SQ. FT.



# GODREJ PALM RETREAT

## SECTOR 150, NOIDA

2 BHK  
 CARPET AREA = 90.81 SQ. M.  
 BALCONY AREA = 16.83 SQ. M.  
 TOTAL AREA = 107.64 SQ. M.



FIRST FLOOR PLAN  
 TOWER - A1, A5, B1, B5

RERA REGISTRATION: Godrej Palm Retreat 1 - UPRERAPRJ745601, Godrej Palm Retreat 2 - UPRERAPRJ124632 - [www.up-rera.in](http://www.up-rera.in). NOIDA/M.V.N/2019/IV-1485/1121 dated 15.05.2019.

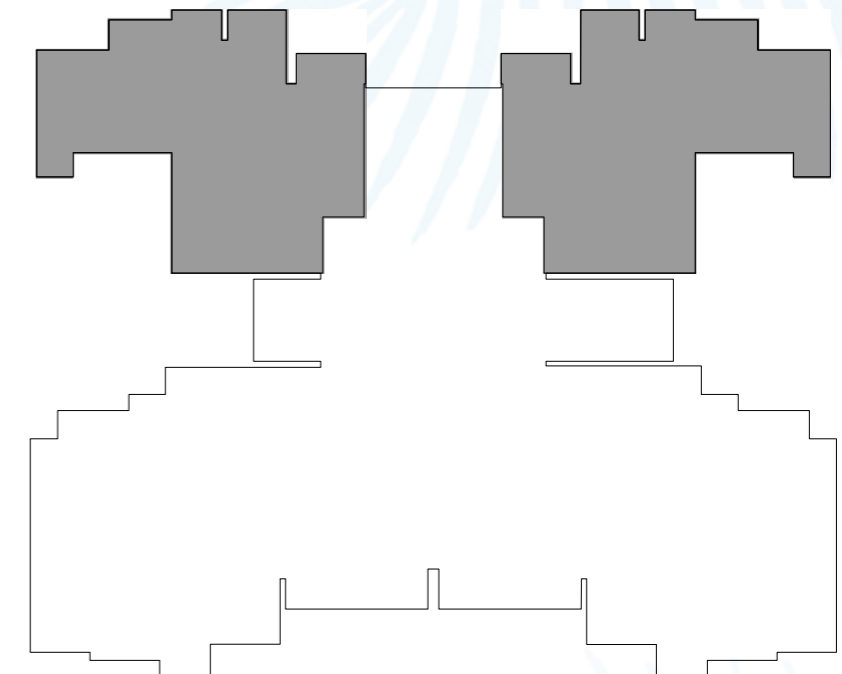
This contains artistic impressions and no warranty is expressly or impliedly given that the completed development will comply in any degree with such artist's impression as depicted. The furniture, accessories, paintings, items, electronic goods, fittings/ fixtures, decorative, false ceiling including finishing materials, specifications, shades, sizes etc shown in the pictures are only indicative in nature and for illustrative purpose only & does not form a part of the standard specification. Project is being developed by ACE Infracity Developers Pvt. Ltd. ("Developer") and has appointed Godrej Projects Development Limited as the Development Manager for the same. Recipients are advised to apprise themselves of the necessary and relevant information of the project/offer prior to making any purchase decisions. The sale is subject to terms of application form and agreement for sale/sub-lease. All specifications of the unit shall be as per the final agreement between the Parties. Recipients are advised to apprise themselves of the necessary and relevant information of the project prior to making any purchase decisions. Govt charges/lease rent/applicable taxes extra. The details shown in the image are only indicative in nature and are only for the purpose of illustrating/indicating a possible layout and do not form part of the standard specifications/amenities/services to be provided in the flat. The official website of Godrej Properties Ltd. is [www.godrejproperties.com](http://www.godrejproperties.com). Please do not rely on the information provided on any other website/marketing material.

1 SQ. M. = 10.764 SQ. FT.

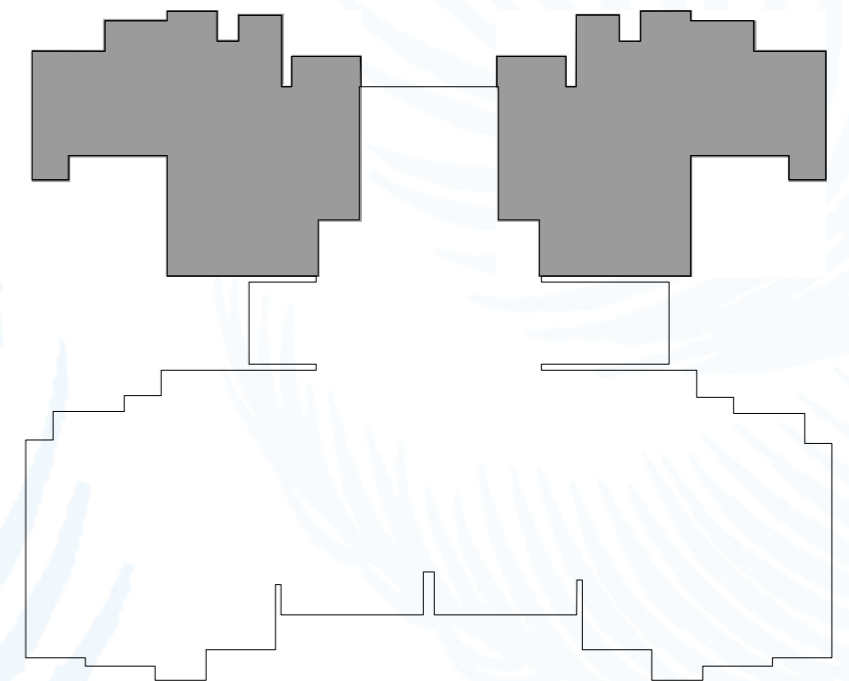
# GODREJ PALM RETREAT

## SECTOR 150, NOIDA

2 BHK (TYPE-4)  
 CARPET AREA = 109.98 SQ. M.  
 BALCONY AREA = 21.15 SQ. M.  
 TOTAL AREA = 131.13 SQ. M.



21<sup>st</sup> (REFUGE) FLOOR PLAN  
 TOWER - ICONIC A2, ICONIC B4



22<sup>nd</sup> FLOOR PLAN  
 TOWER - ICONIC A2, ICONIC B4

RERA REGISTRATION: Godrej Palm Retreat 1 - UPRERAPRJ745601, Godrej Palm Retreat 2 - UPRERAPRJ124632 - [www.up-rera.in](http://www.up-rera.in). NOIDA/M.V.N/2019/IV-1485/1121 dated 15.05.2019.

This contains artistic impressions and no warranty is expressly or impliedly given that the completed development will comply in any degree with such artist's impression as depicted. The furniture, accessories, paintings, items, electronic goods, fittings/ fixtures, decorative, false ceiling including finishing materials, specifications, shades, sizes etc shown in the pictures are only indicative in nature and for illustrative purpose only & does not form a part of the standard specification. Project is being developed by ACE Infracity Developers Pvt. Ltd. ("Developer") and has appointed Godrej Projects Development Limited as the Development Manager for the same. Recipients are advised to apprise themselves of the necessary and relevant information of the project/offer prior to making any purchase decisions. The sale is subject to terms of application form and agreement for sale/sub-lease. All specifications of the unit shall be as per the final agreement between the Parties. Recipients are advised to apprise themselves of the necessary and relevant information of the project prior to making any purchase decisions. Govt charges/lease rent/applicable taxes extra. The details shown in the image are only indicative in nature and are only for the purpose of illustrating/indicating a possible layout and do not form part of the standard specifications/amenities/services to be provided in the flat. The official website of Godrej Properties Ltd. is [www.godrejproperties.com](http://www.godrejproperties.com). Please do not rely on the information provided on any other website/marketing material.

1 SQ. M. = 10.764 SQ. FT.



# GODREJ PALM RETREAT

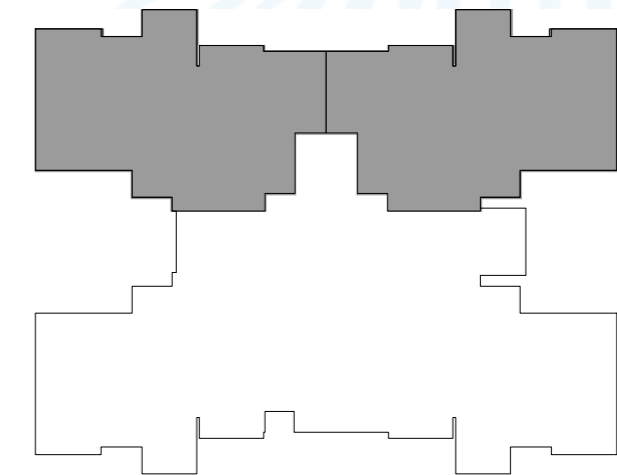
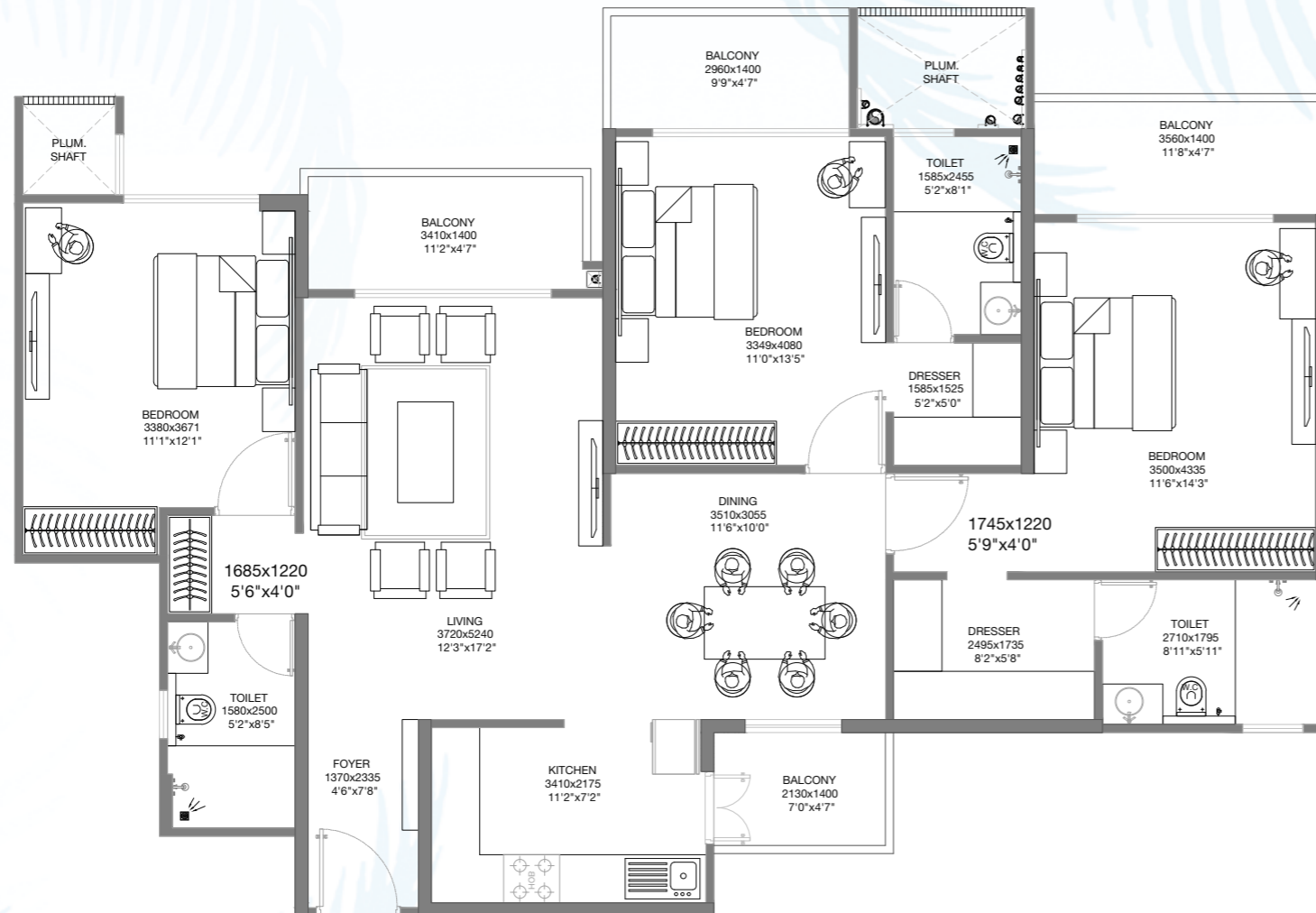
## SECTOR 150, NOIDA

3 BHK

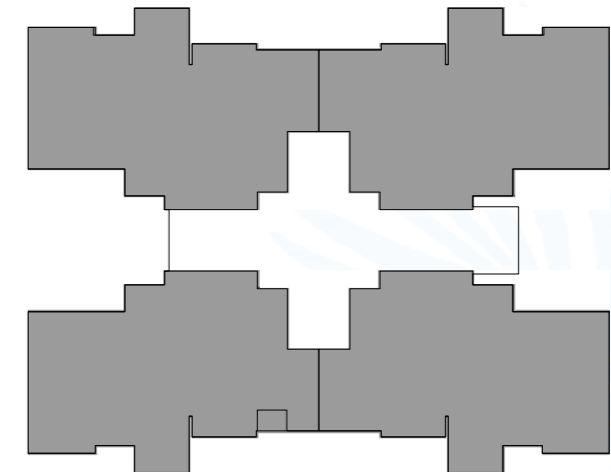
CARPET AREA = 111.68 SQ. M.

BALCONY AREA = 16.83 SQ. M.

TOTAL AREA = 128.51 SQ. M.



FIRST FLOOR PLAN  
TOWER - A1, A5, B1, B5



TYPICAL FLOOR PLAN (2<sup>nd</sup> to 6<sup>th</sup>)  
TOWER - A1, A5, B1, B5

RERA REGISTRATION: Godrej Palm Retreat 1 - UPRERAPRJ745601, Godrej Palm Retreat 2 - UPRERAPRJ124632 - [www.up-rera.in](http://www.up-rera.in). NOIDA/M.V.N/2019/IV-1485/1121 dated 15.05.2019.

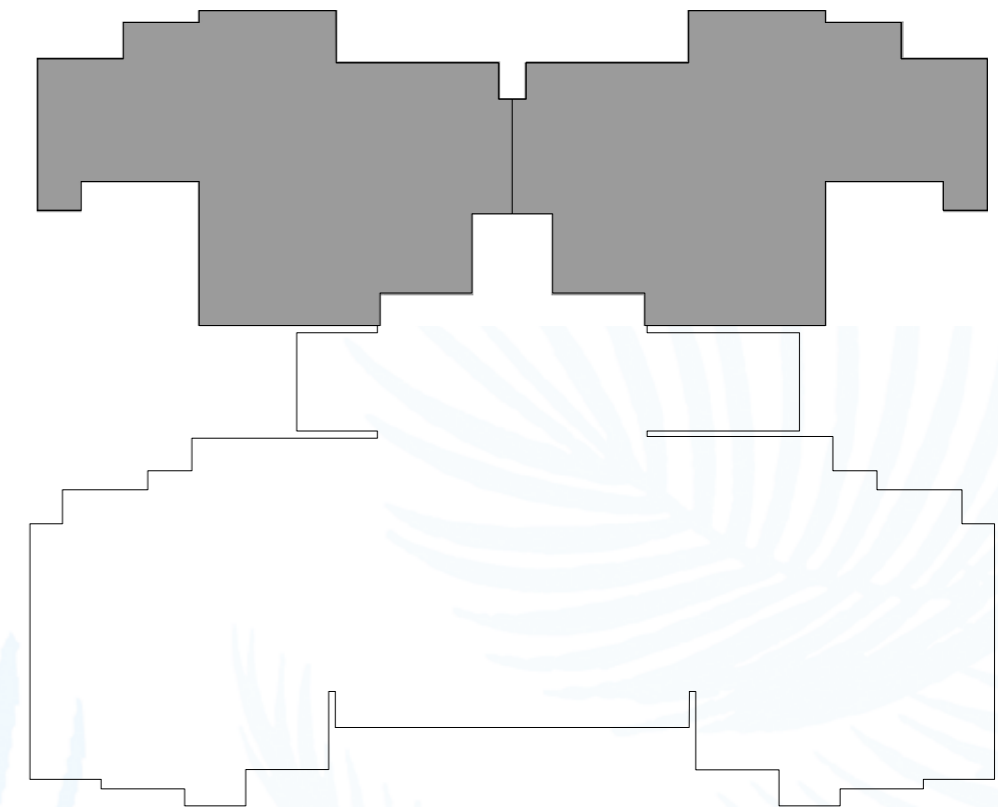
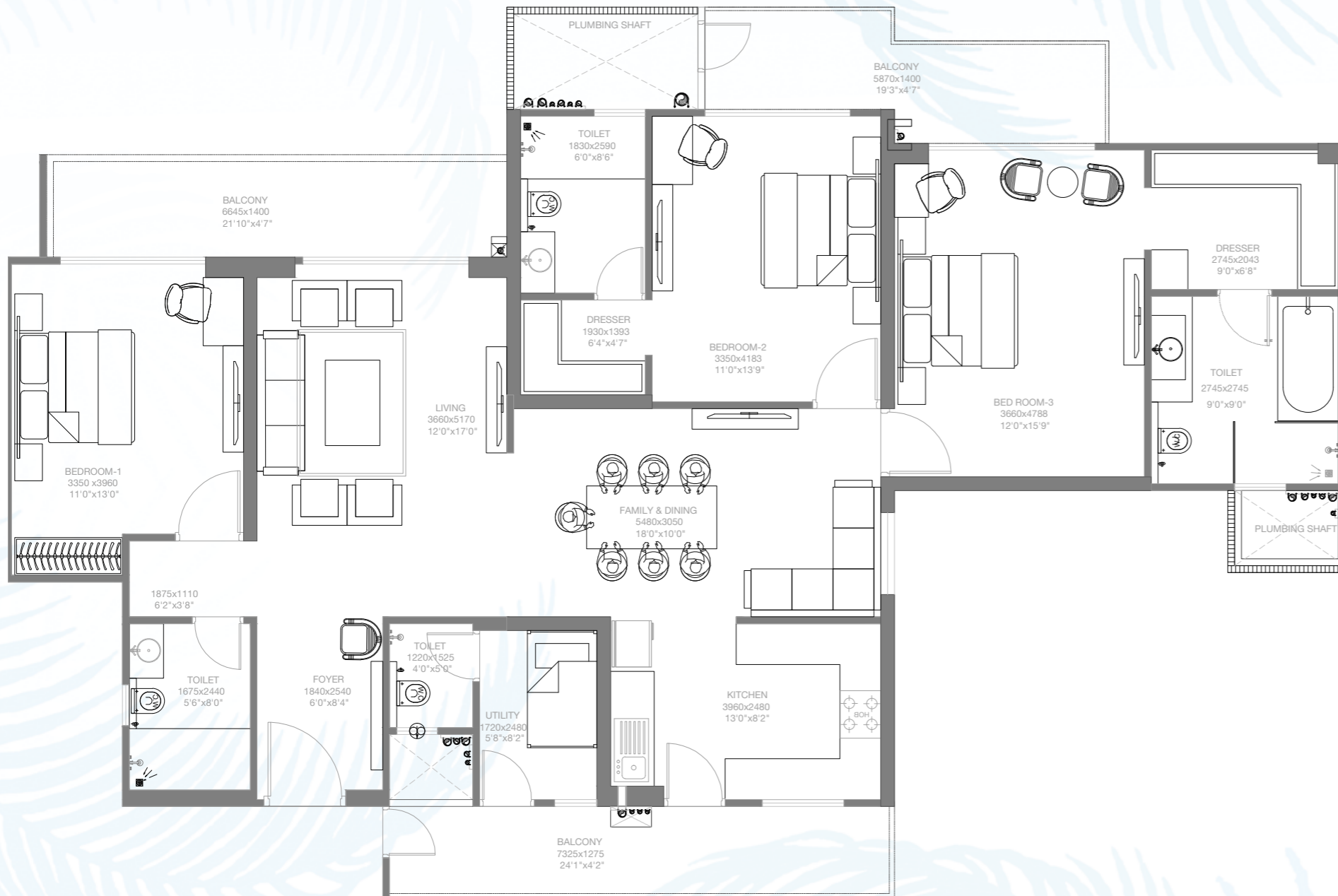
This contains artistic impressions and no warranty is expressly or impliedly given that the completed development will comply in any degree with such artist's impression as depicted. The furniture, accessories, paintings, items, electronic goods, fittings/ fixtures, decorative, false ceiling including finishing materials, specifications, shades, sizes etc shown in the pictures are only indicative in nature and for illustrative purpose only & does not form a part of the standard specification. Project is being developed by ACE Infracity Developers Pvt. Ltd. ("Developer") and has appointed Godrej Projects Development Limited as the Development Manager for the same. Recipients are advised to apprise themselves of the necessary and relevant information of the project/offer prior to making any purchase decisions. The sale is subject to terms of application form and agreement for sale/sub-lease. All specifications of the unit shall be as per the final agreement between the Parties. Recipients are advised to apprise themselves of the necessary and relevant information of the project prior to making any purchase decisions. Govt charges/lease rent/applicable taxes extra. The details shown in the image are only indicative in nature and are only for the purpose of illustrating/indicating a possible layout and do not form part of the standard specifications/amenities/services to be provided in the flat. The official website of Godrej Properties Ltd. is [www.godrejproperties.com](http://www.godrejproperties.com). Please do not rely on the information provided on any other website/marketing material.

1 SQ. M. = 10.764 SQ. FT.

# GODREJ PALM RETREAT

## SECTOR 150, NOIDA

3 BHK (TYPE-2)  
 CARPET AREA = 135.17 SQ. M.  
 BALCONY AREA = 26.58 SQ. M.  
 TOTAL AREA = 161.75 SQ. M.



**TYPICAL FLOOR PLAN (2<sup>nd</sup>-6<sup>th</sup>, 10<sup>th</sup>-20<sup>th</sup>, 23<sup>rd</sup>-24<sup>th</sup>)  
 TOWER - ICONIC A2, ICONIC B4**

**RERA REGISTRATION:** Godrej Palm Retreat 1 - UPRERAPRJ745601, Godrej Palm Retreat 2 - UPRERAPRJ124632 - [www.up-rera.in](http://www.up-rera.in). NOIDA/M.V.N/2019/IV-1485/1121 dated 15.05.2019.

This contains artistic impressions and no warranty is expressly or impliedly given that the completed development will comply in any degree with such artist's impression as depicted. The furniture, accessories, paintings, items, electronic goods, fittings/ fixtures, decorative, false ceiling including finishing materials, specifications, shades, sizes etc shown in the pictures are only indicative in nature and for illustrative purpose only & does not form a part of the standard specification. Project is being developed by ACE Infracity Developers Pvt. Ltd. ("Developer") and has appointed Godrej Projects Development Limited as the Development Manager for the same. Recipients are advised to apprise themselves of the necessary and relevant information of the project/offer prior to making any purchase decisions. The sale is subject to terms of application form and agreement for sale/sub-lease. All specifications of the unit shall be as per the final agreement between the Parties. Recipients are advised to apprise themselves of the necessary and relevant information of the project prior to making any purchase decisions. Govt charges/lease rent/applicable taxes extra. The details shown in the image are only indicative in nature and are only for the purpose of illustrating/indicating a possible layout and do not form part of the standard specifications/amenities/services to be provided in the flat. The official website of Godrej Properties Ltd. is [www.godrejproperties.com](http://www.godrejproperties.com). Please do not rely on the information provided on any other website/marketing material.

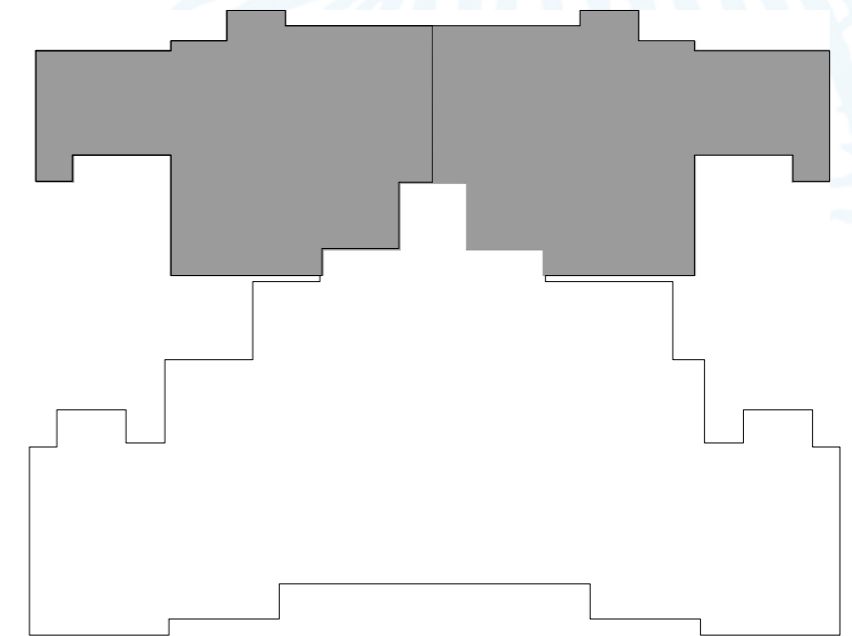
1 SQ. M. = 10.764 SQ. FT.



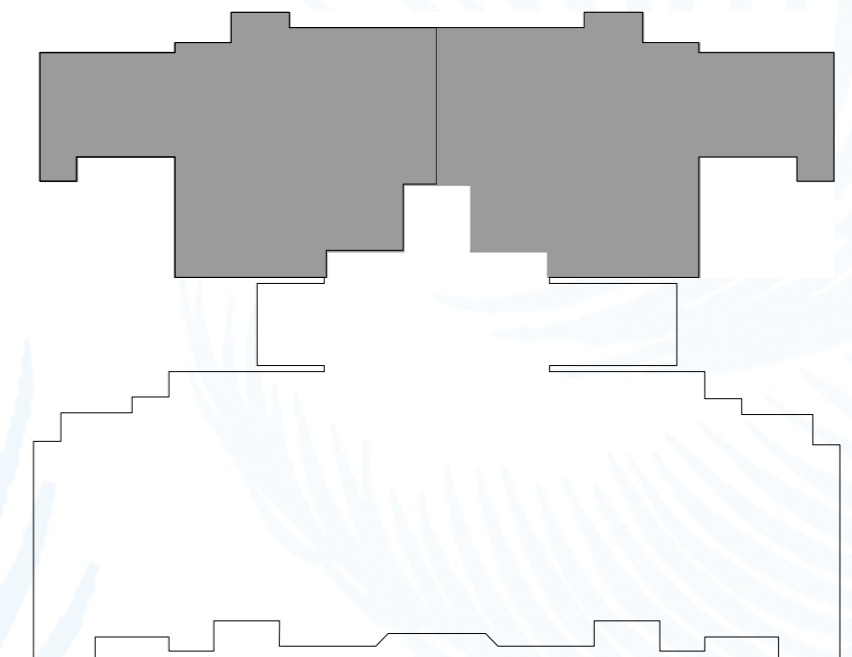
# GODREJ PALM RETREAT

## SECTOR 150, NOIDA

3 BHK  
 CARPET AREA = 135.17 SQ. M.  
 BALCONY AREA = 28.39 SQ. M.  
 TOTAL AREA = 163.56 SQ. M.



8<sup>th</sup> FLOOR PLAN  
 TOWER - ICONIC A2 & ICONIC B4



26<sup>th</sup> FLOOR PLAN  
 TOWER - ICONIC A2, ICONIC B4

RERA REGISTRATION: Godrej Palm Retreat 1 - UPRERAPRJ745601, Godrej Palm Retreat 2 - UPRERAPRJ124632 - [www.up-rera.in](http://www.up-rera.in). NOIDA/M.V.N/2019/IV-1485/1121 dated 15.05.2019.

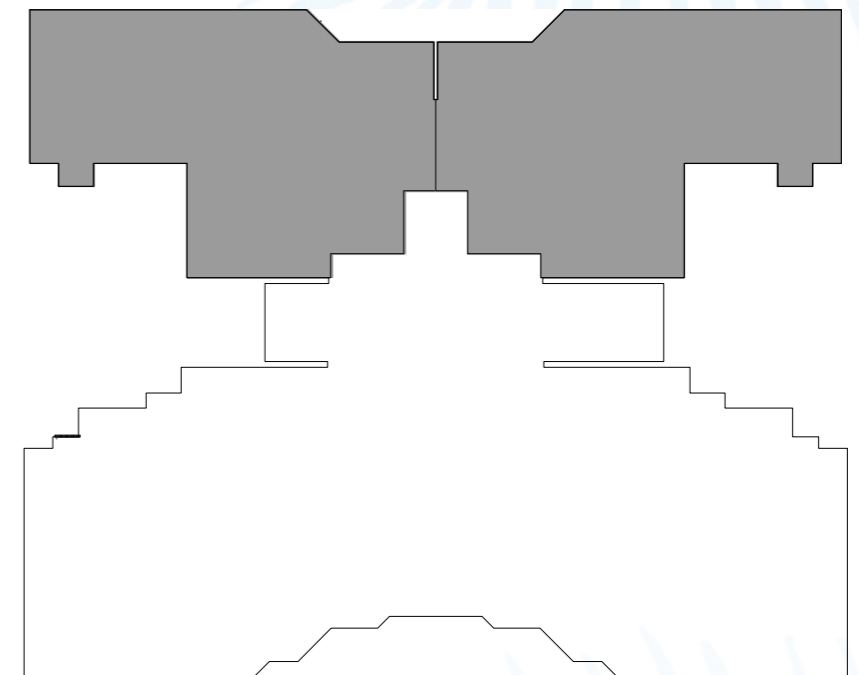
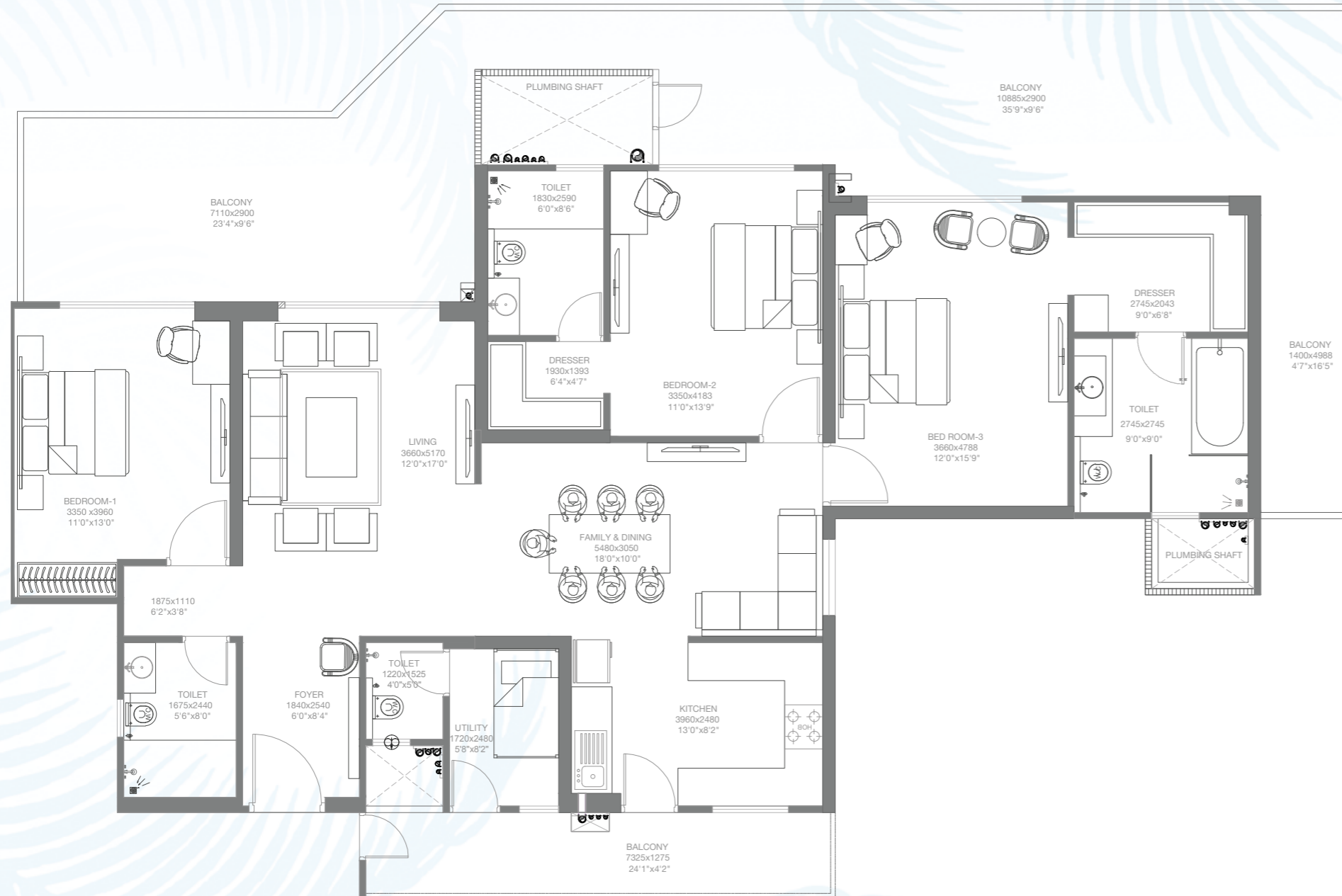
This contains artistic impressions and no warranty is expressly or impliedly given that the completed development will comply in any degree with such artist's impression as depicted. The furniture, accessories, paintings, items, electronic goods, fittings/ fixtures, decorative, false ceiling including finishing materials, specifications, shades, sizes etc shown in the pictures are only indicative in nature and for illustrative purpose only & does not form a part of the standard specification. Project is being developed by ACE Infracity Developers Pvt. Ltd. ("Developer") and has appointed Godrej Projects Development Limited as the Development Manager for the same. Recipients are advised to apprise themselves of the necessary and relevant information of the project/offer prior to making any purchase decisions. The sale is subject to terms of application form and agreement for sale/sub-lease. All specifications of the unit shall be as per the final agreement between the Parties. Recipients are advised to apprise themselves of the necessary and relevant information of the project prior to making any purchase decisions. Govt charges/lease rent/applicable taxes extra. The details shown in the image are only indicative in nature and are only for the purpose of illustrating/indicating a possible layout and do not form part of the standard specifications/amenities/services to be provided in the flat. The official website of Godrej Properties Ltd. is [www.godrejproperties.com](http://www.godrejproperties.com). Please do not rely on the information provided on any other website/marketing material.

1 SQ. M. = 10.764 SQ. FT.

# GODREJ PALM RETREAT

## SECTOR 150, NOIDA

3 BHK  
 CARPET AREA = 135.17 SQ. M.  
 BALCONY AREA = 71.60 SQ. M.  
 TOTAL AREA = 206.77 SQ. M.



7<sup>th</sup> FLOOR PLAN  
 TOWER - ICONIC A2 & ICONIC B4



9<sup>th</sup> & 25<sup>th</sup> FLOOR PLAN  
 TOWER - ICONIC A2, ICONIC B4

RERA REGISTRATION: Godrej Palm Retreat 1 - UPRERAPRJ745601, Godrej Palm Retreat 2 - UPRERAPRJ124632 - [www.up-rera.in](http://www.up-rera.in). NOIDA/M.V.N/2019/IV-1485/1121 dated 15.05.2019.

This contains artistic impressions and no warranty is expressly or impliedly given that the completed development will comply in any degree with such artist's impression as depicted. The furniture, accessories, paintings, items, electronic goods, fittings/ fixtures, decorative, false ceiling including finishing materials, specifications, shades, sizes etc shown in the pictures are only indicative in nature and for illustrative purpose only & does not form a part of the standard specification. Project is being developed by ACE Infracity Developers Pvt. Ltd. ("Developer") and has appointed Godrej Projects Development Limited as the Development Manager for the same. Recipients are advised to apprise themselves of the necessary and relevant information of the project/offer prior to making any purchase decisions. The sale is subject to terms of application form and agreement for sale/sub-lease. All specifications of the unit shall be as per the final agreement between the Parties. Recipients are advised to apprise themselves of the necessary and relevant information of the project prior to making any purchase decisions. Govt charges/lease rent/applicable taxes extra. The details shown in the image are only indicative in nature and are only for the purpose of illustrating/indicating a possible layout and do not form part of the standard specifications/amenities/services to be provided in the flat. The official website of Godrej Properties Ltd. is [www.godrejproperties.com](http://www.godrejproperties.com). Please do not rely on the information provided on any other website/marketing material.

1 SQ. M. = 10.764 SQ. FT.



# GODREJ PALM RETREAT

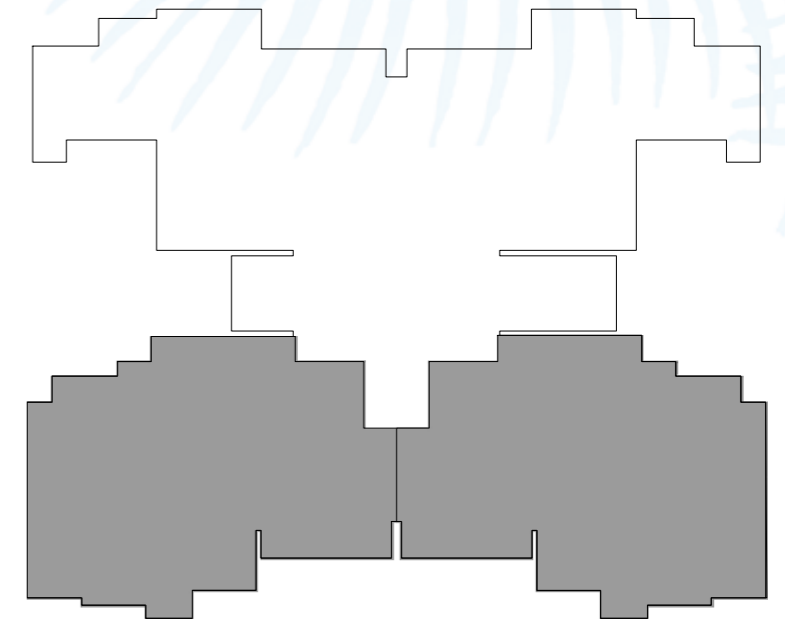
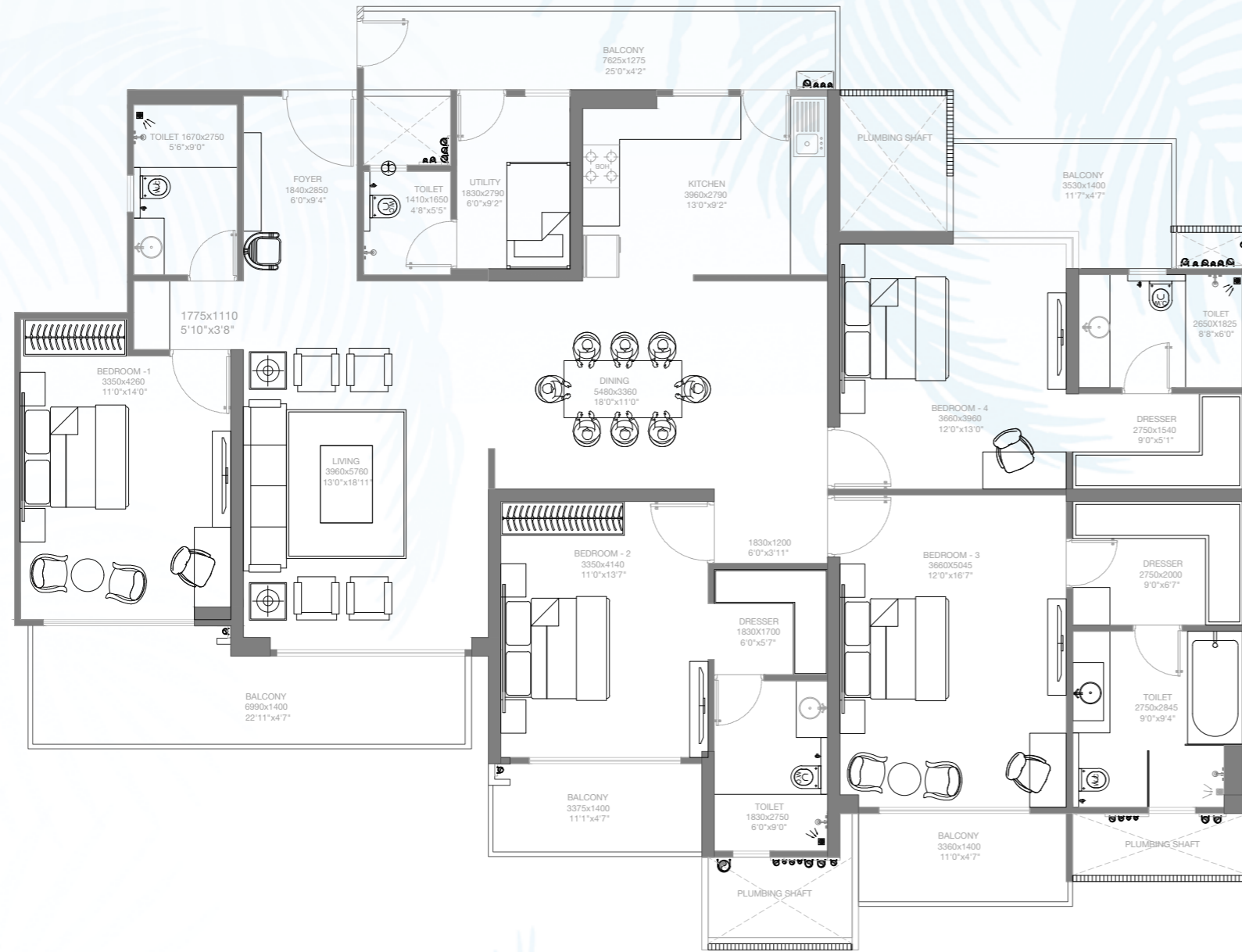
## SECTOR 150, NOIDA

4 BHK

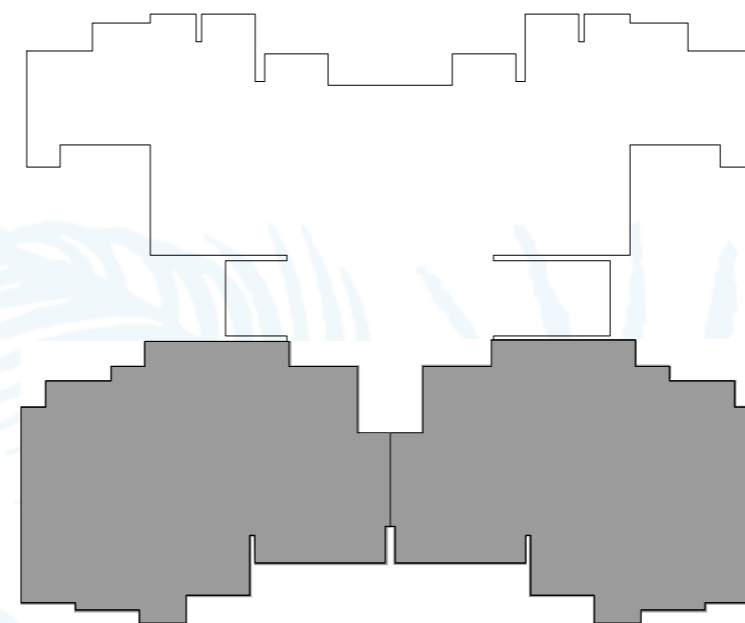
CARPET AREA = 176.75 SQ. M.

BALCONY AREA = 36.26 SQ. M.

TOTAL AREA = 213.01 SQ. M.



**TYPICAL FLOOR PLAN (2<sup>nd</sup>-6<sup>th</sup>, 10<sup>th</sup>-20<sup>th</sup>, 23<sup>rd</sup>-24<sup>th</sup>)  
TOWER - ICONIC A2, ICONIC B4**



**21<sup>st</sup> (REFUGE) FLOOR PLAN  
TOWER - ICONIC A2, ICONIC B4**



**22<sup>nd</sup> FLOOR PLAN  
TOWER - ICONIC A2, ICONIC B4**

RERA REGISTRATION: Godrej Palm Retreat 1 - UPRERAPRJ745601, Godrej Palm Retreat 2 - UPRERAPRJ124632 - [www.up-rera.in](http://www.up-rera.in). NOIDA/M.V.N/2019/IV-1485/1121 dated 15.05.2019.

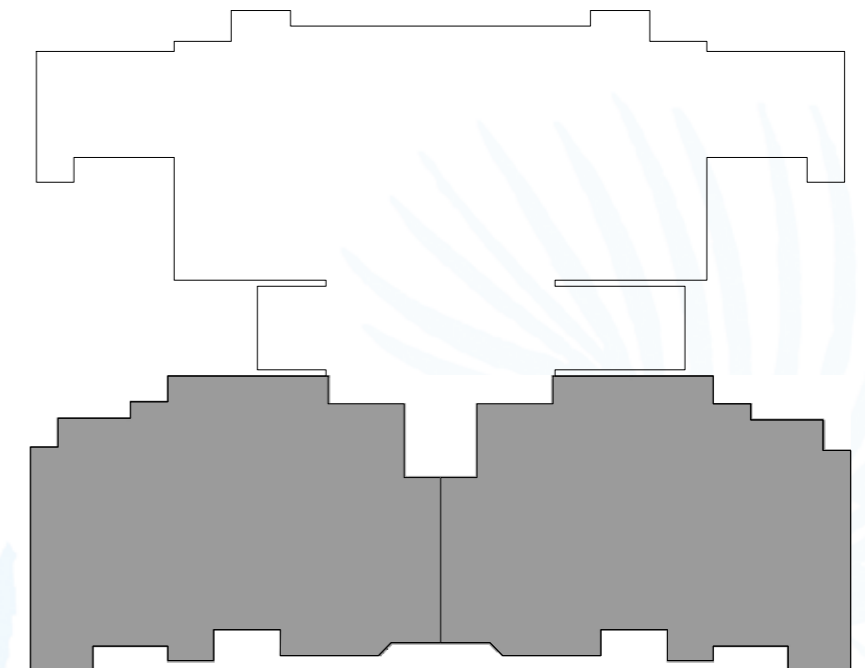
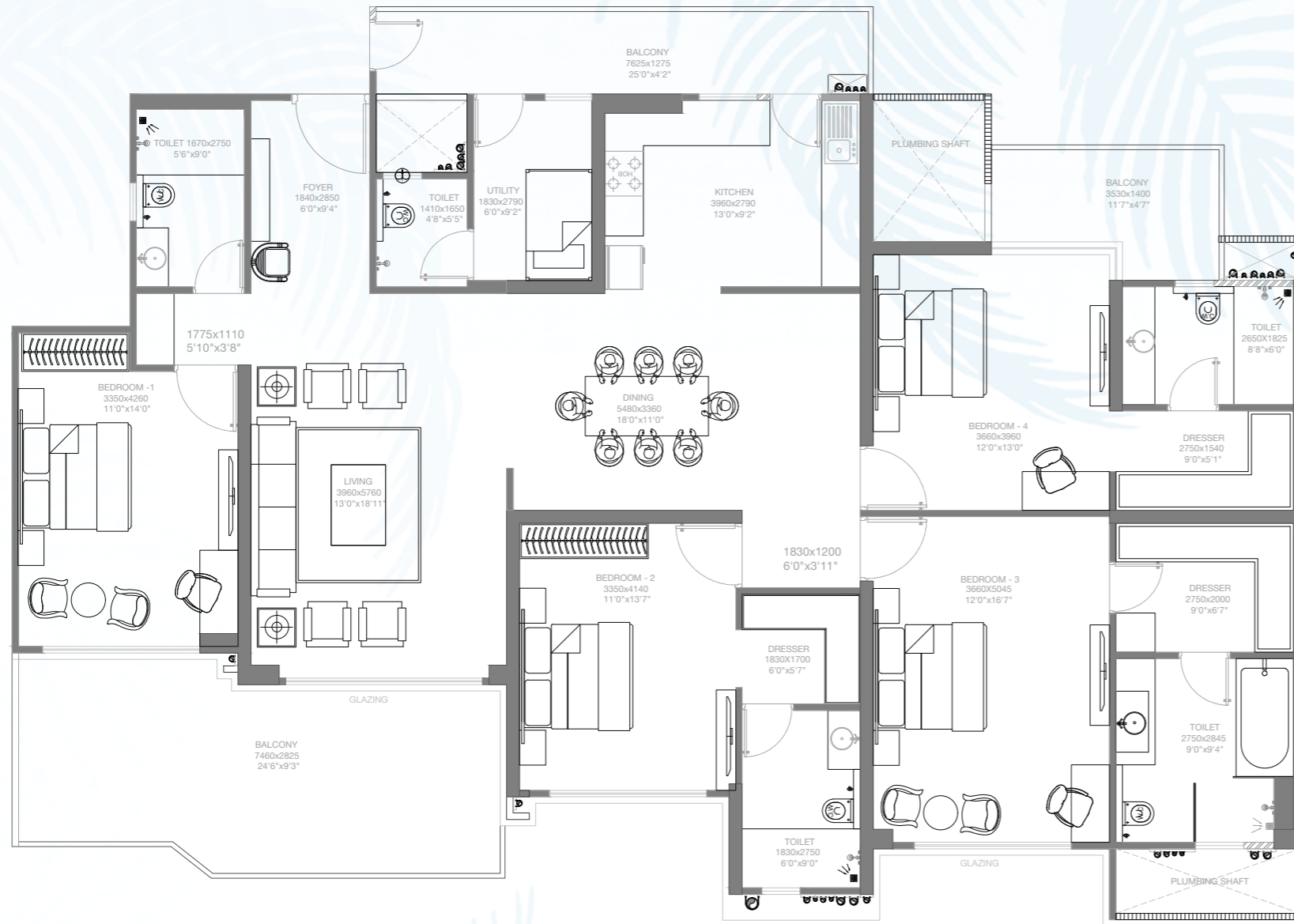
This contains artistic impressions and no warranty is expressly or impliedly given that the completed development will comply in any degree with such artist's impression as depicted. The furniture, accessories, paintings, items, electronic goods, fittings/ fixtures, decorative, false ceiling including finishing materials, specifications, shades, sizes etc shown in the pictures are only indicative in nature and for illustrative purpose only & does not form a part of the standard specification. Project is being developed by ACE Infracity Developers Pvt. Ltd. ("Developer") and has appointed Godrej Projects Development Limited as the Development Manager for the same. Recipients are advised to apprise themselves of the necessary and relevant information of the project/offer prior to making any purchase decisions. The sale is subject to terms of application form and agreement for sale/sub-lease. All specifications of the unit shall be as per the final agreement between the Parties. Recipients are advised to apprise themselves of the necessary and relevant information of the project prior to making any purchase decisions. Govt charges/lease rent/applicable taxes extra. The details shown in the image are only indicative in nature and are only for the purpose of illustrating/indicating a possible layout and do not form part of the standard specifications/amenities/services to be provided in the flat. The official website of Godrej Properties Ltd. is [www.godrejproperties.com](http://www.godrejproperties.com). Please do not rely on the information provided on any other website/marketing material.

1 SQ. M. = 10.764 SQ. FT.

# GODREJ PALM RETREAT

## SECTOR 150, NOIDA

4 BHK  
 CARPET AREA = 176.75 SQ. M.  
 BALCONY AREA = 36.66 SQ. M.  
 TOTAL AREA = 213.41 SQ. M.



**26<sup>th</sup> FLOOR PLAN**  
**TOWER - ICONIC A2, ICONIC B4**

RERA REGISTRATION: Godrej Palm Retreat 1 - UPRERAPRJ745601, Godrej Palm Retreat 2 - UPRERAPRJ124632 - [www.up-rera.in](http://www.up-rera.in). NOIDA/M.V.N/2019/IV-1485/1121 dated 15.05.2019.

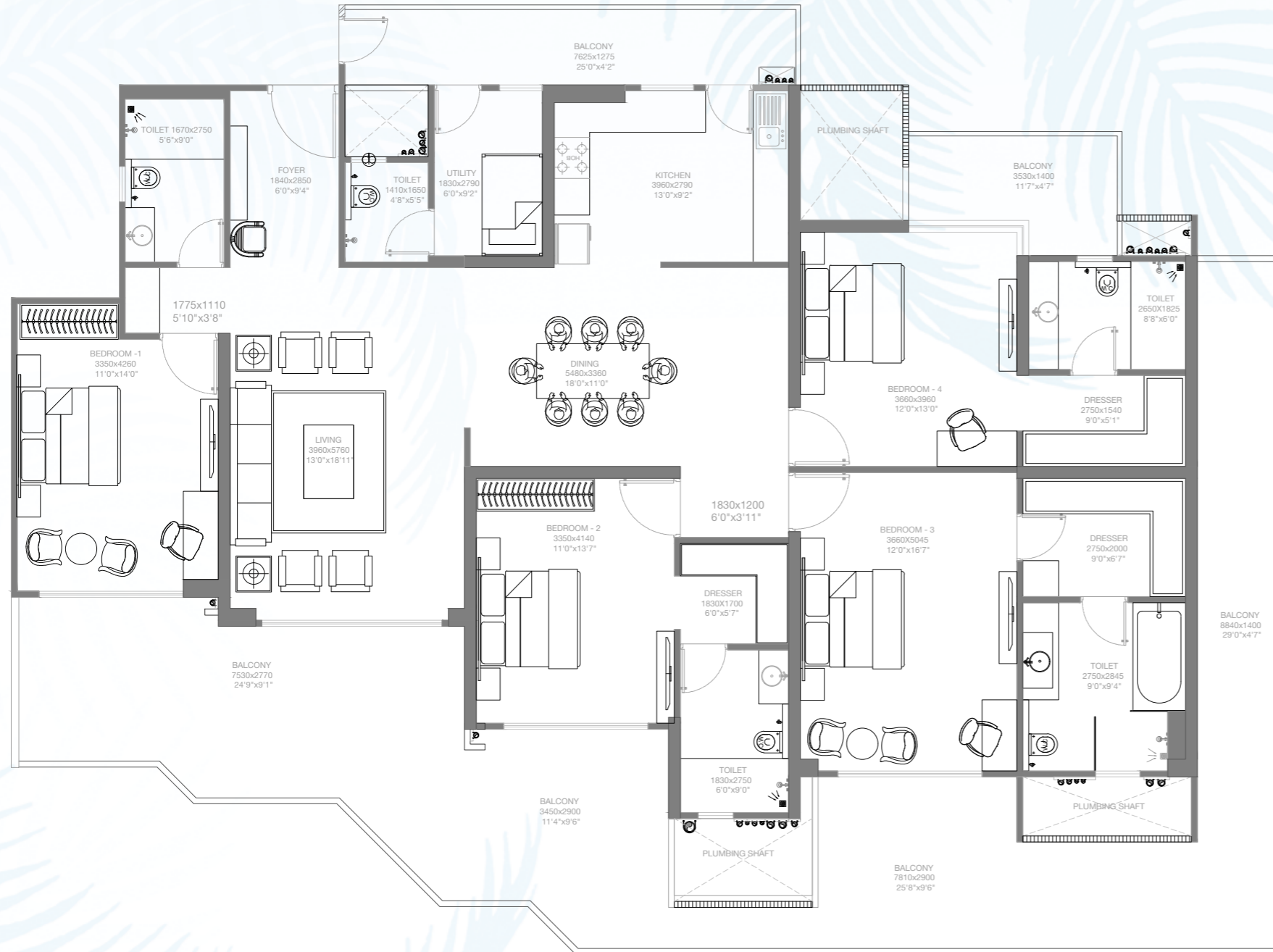
This contains artistic impressions and no warranty is expressly or impliedly given that the completed development will comply in any degree with such artist's impression as depicted. The furniture, accessories, paintings, items, electronic goods, fittings/ fixtures, decorative, false ceiling including finishing materials, specifications, shades, sizes etc shown in the pictures are only indicative in nature and for illustrative purpose only & does not form a part of the standard specification. Project is being developed by ACE Infracity Developers Pvt. Ltd. ("Developer") and has appointed Godrej Projects Development Limited as the Development Manager for the same. Recipients are advised to apprise themselves of the necessary and relevant information of the project/offer prior to making any purchase decisions. The sale is subject to terms of application form and agreement for sale/sub-lease. All specifications of the unit shall be as per the final agreement between the Parties. Recipients are advised to apprise themselves of the necessary and relevant information of the project prior to making any purchase decisions. Govt charges/lease rent/applicable taxes extra. The details shown in the image are only indicative in nature and are only for the purpose of illustrating/indicating a possible layout and do not form part of the standard specifications/amenities/services to be provided in the flat. The official website of Godrej Properties Ltd. is [www.godrejproperties.com](http://www.godrejproperties.com). Please do not rely on the information provided on any other website/marketing material.

1 SQ. M. = 10.764 SQ. FT.

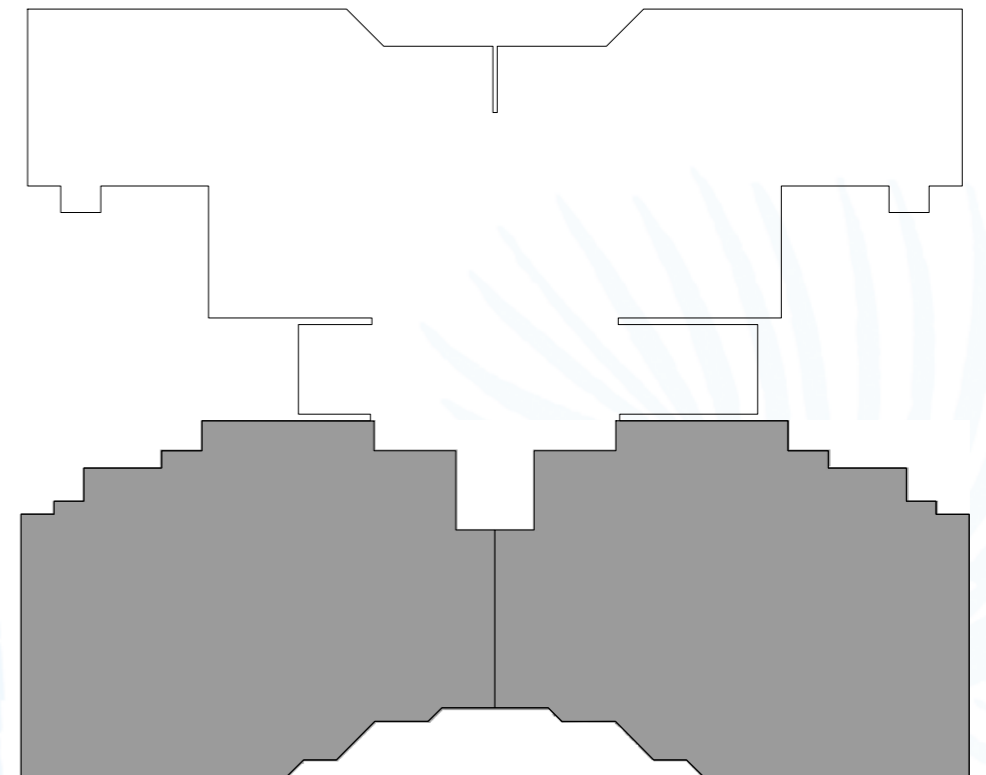


# GODREJ PALM RETREAT

## SECTOR 150, NOIDA



4 BHK  
 CARPET AREA = 176.75 SQ. M.  
 BALCONY AREA = 83.80 SQ. M.  
 TOTAL AREA = 260.55 SQ. M.



**9<sup>th</sup> & 25<sup>th</sup> FLOOR PLAN**  
**TOWER - ICONIC A2, ICONIC B4**

RERA REGISTRATION: Godrej Palm Retreat 1 - UPRERAPRJ745601, Godrej Palm Retreat 2 - UPRERAPRJ124632 - [www.up-rera.in](http://www.up-rera.in). NOIDA/M.V.N/2019/IV-1485/1121 dated 15.05.2019.

This contains artistic impressions and no warranty is expressly or impliedly given that the completed development will comply in any degree with such artist's impression as depicted. The furniture, accessories, paintings, items, electronic goods, fittings/ fixtures, decorative, false ceiling including finishing materials, specifications, shades, sizes etc shown in the pictures are only indicative in nature and for illustrative purpose only & does not form a part of the standard specification. Project is being developed by ACE Infracity Developers Pvt. Ltd. ("Developer") and has appointed Godrej Projects Development Limited as the Development Manager for the same. Recipients are advised to apprise themselves of the necessary and relevant information of the project/offer prior to making any purchase decisions. The sale is subject to terms of application form and agreement for sale/sub-lease. All specifications of the unit shall be as per the final agreement between the Parties. Recipients are advised to apprise themselves of the necessary and relevant information of the project prior to making any purchase decisions. Govt charges/lease rent/applicable taxes extra. The details shown in the image are only indicative in nature and are only for the purpose of illustrating/indicating a possible layout and do not form part of the standard specifications/amenities/services to be provided in the flat. The official website of Godrej Properties Ltd. is [www.godrejproperties.com](http://www.godrejproperties.com). Please do not rely on the information provided on any other website/marketing material.

1 SQ. M. = 10.764 SQ. FT.