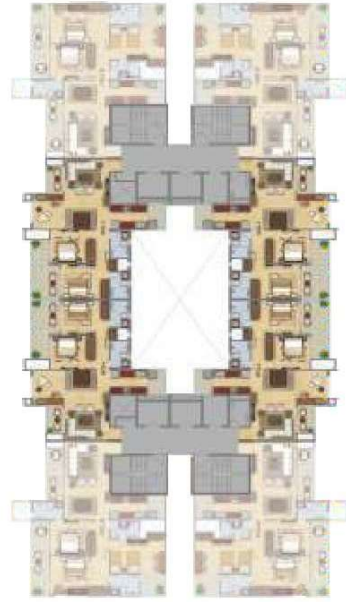


HIG-1

2 BHK + Study (Typical Floor)

Super Area - 132.38 sq.m./ 1425 sq. ft.
 Carpet Area - 79.11 sq.m./ 851.60 sq.ft.
 Balcony Area - 15.35 sq.m./ 165.30 sq.ft.

- 2 Bedrooms
- Study
- 2 Toilets
- Living Room
- Dining Room
- Kitchen with Utility
- Balconies



TYPE-2
 Typical: 2, 3, 4, 6, 7, 8, 10, 11, 12, 14, 15, 16, 18, 19, 20, 22 Floor Plan

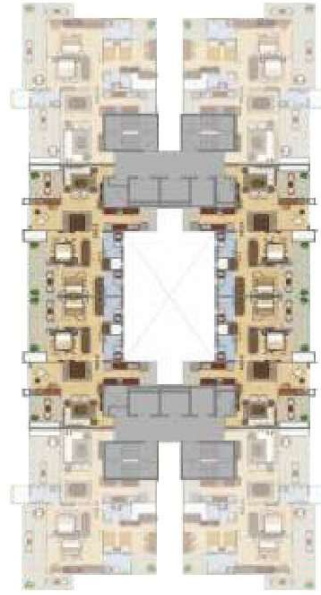
The depiction of images of layout and features as mentioned above, are based on artistic impression. The customers are advised to check and re-verify the layout and features as mentioned from the website of RERA and/or from the office of the Developer. 1Sq mtr. = 10.764 sq. ft. The dimensions are from the unfinished walls (including skirting thickness).

HIG-II

2 BHK + Study (Typical Floor)

Super Area - 136.10 sq. m./ 1465.00 sq. Ft.
 Carpet Area - 79.15 sq. m./ 852 sq. ft.
 Balcony Area - 18.58 sq.m./ 200 sq. ft.

- 2 Bedrooms
- Study
- 2 Toilets
- Living Room
- Dining Room
- Kitchen with Utility
- Balconies



TYPE-1
 Typical: 1, 5, 9, 13, 17, 21 Floor Plan

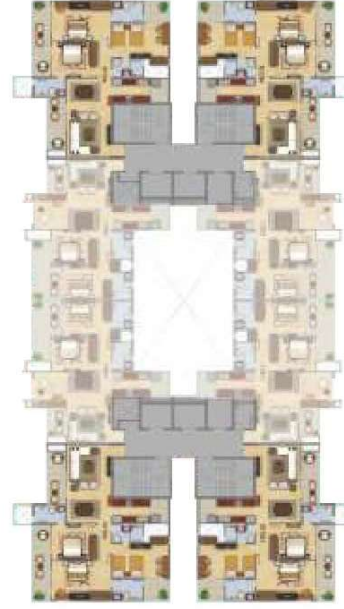
The depiction of images of layout and features as mentioned above, are based on artistic impression. The customers are advised to check and re-verify the layout and features as mentioned from the website of RERA and/or from the office of the Developer. 1Sq mtr. = 10.764 sq. ft. The dimensions are from the unfinished walls (including skirting thickness).

HIG-III

3 BHK (Typical Floor)

Super Area - 163.50 sq.m./ 1760 sq. ft.
 Carpet Area - 98.18 sq.m./ 1056.90 sq.ft.
 Balcony Area - 22.57 sq.m./ 243 sq.ft.

- 3 Bedrooms
- 3 Toilets
- Living Room
- Dining Room
- Kitchen with Utility
- Balconies



TYPE-2
 Typical: 2, 3, 4, 6, 7, 8, 10, 11, 12, 14, 15, 16, 18, 19, 20, 22 Floor Plan

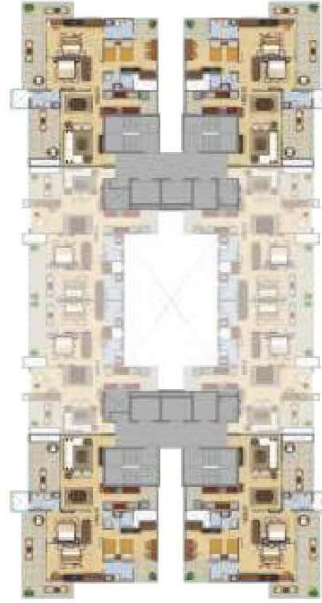
The depiction of images of layout and features as mentioned above, are based on artistic impression. The customers are advised to check and re-verify the layout and features as mentioned from the website of RERA and/or from the office of the Developer. 1Sq mtr. = 10.764 sq. ft. The dimensions are from the unfinished walls (including skirting thickness).

HIG-IV

3 BHK (Typical Floor)

Super Area - 180.69 sq. m./ 1945 sq. ft.
 Carpet Area - 98.25 sq.m./ 1057.60 sq.ft.
 Balcony Area - 39.87 sq.m./ 429.20 sq.ft.

- 3 Bedrooms
- 3 Toilets
- Living Room
- Dining Room
- Kitchen with Utility
- Balconies



TYPE-1
 Typical: 1, 5, 9, 13, 17, 21 Floor Plan

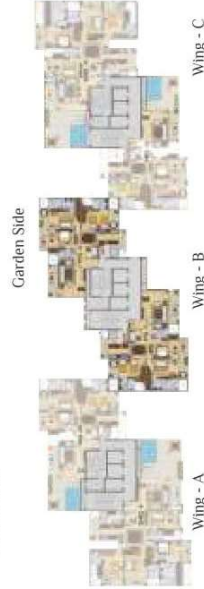
The depiction of images of layout and features as mentioned above, are based on artistic impression. The customers are advised to check and re-verify the layout and features as mentioned from the website of RERA and/or from the office of the Developer. 1Sq mtr. = 10.764 sq. ft. The dimensions are from the unfinished walls (including skirting thickness).

HIG-V

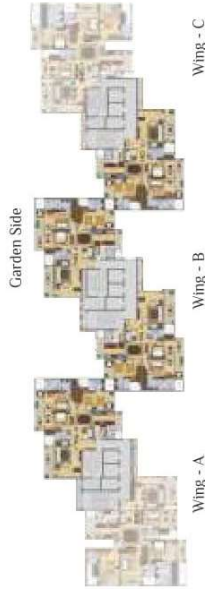
3 BHK (Typical Floor)

Super Area - 221.57 sq.m./ 2385 sq.ft.
 Carpet Area - 135 sq.m./ 1453.15 sq.ft.
 Balcony Area - 26.59 sq.m./ 286.30 sq.ft.

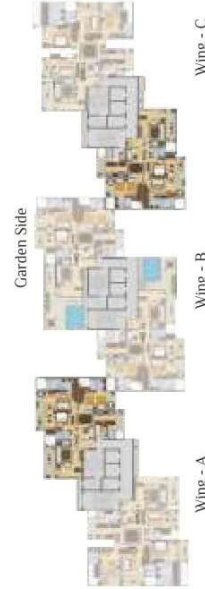
- 3 Bedrooms
- 3 Toilets
- Living Room
- Family/Dining Room
- Kitchen with Utility
- St. Room with Toilet
- Balconies



Typical: 5, 9, 13, 17, 21 Floor Plan



Typical: 2, 4, 6, 8, 10, 12, 14, 16, 18, 20, 22 Floor Plan



Typical: 3, 7, 11, 15, 19 Floor Plan

The depiction of images of layout and features as mentioned above are based on artistic impression. The customers are advised to check and re-verify the layout and features as mentioned from the website of RERA and/or from the office of the Developer. 1Sq mtr. = 10.764 sq. ft. The dimensions are from the unfinished walls (including skirting thickness).

HIG-VI

3 BHK + Terrace (Typical Floor)

Super Area - 250.85 sq. m. / 2700 sq.ft.
 Carpet Area - 155.66 sq.m. / 1460.50 sq.ft.
 Balcony Area - 26.75 sq.m. / 287.80 sq.ft.
 Open Terrace - 26.19 sq.m. / 282.01 sq.ft.

- 3 Bedrooms
- 3 Toilets
- Living Room
- Family / Dining Room
- Kitchen with Utility
- St. Room with Toilet
- Balconies
- Terrace



Wing - A
 Wing - B
 Road Side
 Typical: 5, 9, 15, 17, 21 Floor Plan

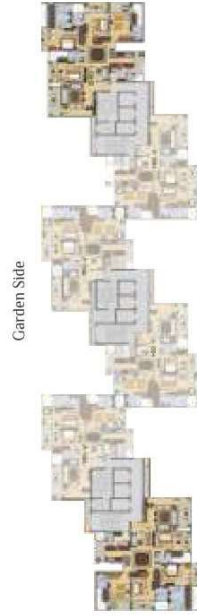
Wing - C
 Garden Side
 Wing - B
 Road Side
 Typical: 3, 7, 11, 15, 19 Floor Plan

SHIG-1

4 BHK (Typical Floor)

Super Area - 274.06 sq.m./ 2950 sq.ft.
 Carpet Area - 177.17 sq.m./ 1907.10 sq.ft.
 Balcony Area - 37.50 sq.m./ 403.70 sq.ft.

- 4 Bedrooms
- 4 Toilets
- Living Room
- Family / Dining Room
- Kitchen with Utility
- St. Room with Toilet
- Balconies



Wing - A Wing - B Wing - C

Road Side
 Typical: 2, 4, 6, 8, 10, 12, 14, 16, 18, 20, 22 Floor Plan



Wing - A Wing - B Wing - C

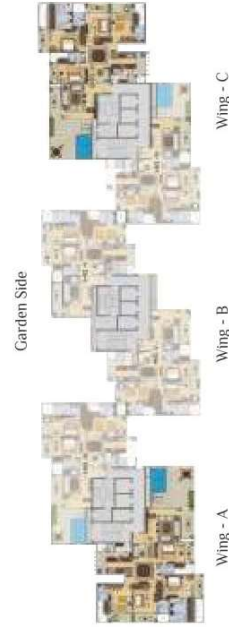
Road Side
 Typical: 3, 7, 11, 15, 19 Floor Plan

SHIG-II

4 BHK + Terrace (Typical Floor)

Super Area - 315.87 sq. m. / 3400 sq.ft.
 Carpet Area - 178.05 sq.m. / 1916.35 sq.ft.
 Balcony Area - 37.68 sq.m. / 405.65 sq.ft.
 Open Terrace - 39.11 sq.m. / 421.08 sq.ft.

- 4 Bedrooms
- 4 Toilets
- Living Room
- Family / Dining Room
- Kitchen with Utility
- St. Room with Toilet
- Balconies
- Terrace



Wing - A
 Wing - B
 Wing - C
 Wing - D
 Road Side
 Typical: 5, 13, 17, 21 Floor Plan

The depiction of images of layout and features as mentioned above are based on artistic impression. The customers are advised to check and re-verify the layout and features as mentioned from the website of RERA and/or from the office of the Developer. 1Sq mtr. = 10.764 sq. ft. The dimensions are from the unfinished walls (including skirting thickness).