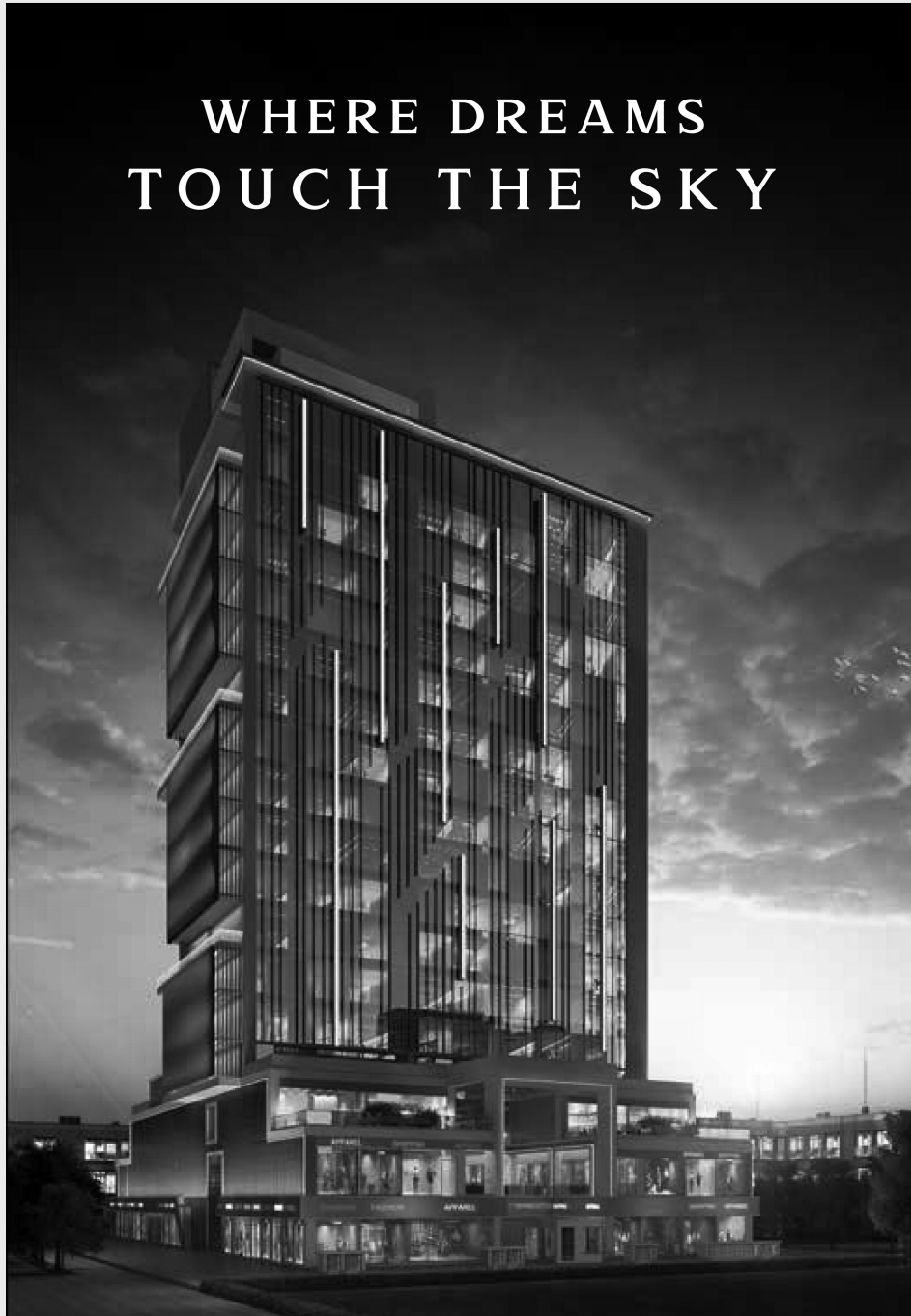




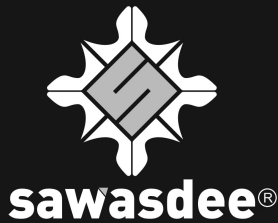
WHERE DREAMS  
TOUCH THE SKY



R E R A   R E G I S T R A T I O N   N O .   D L R E R A 2 0 2 2 P 0 0 1 4

**DISCLAIMER:** The DESIGN/ELEVATION AND LOCALITY/VICINITY of the Project contained in this BROCHURE are photographic and artistic impressions and are for ILLUSTRATIVE PURPOSES only and should not be relied upon when making a decision to purchase. The Developer does not take any responsibility for inaccuracy or variations in the illustration and information as depicted in the brochure.

# ABOUT THE COMPANY



We are a group from Delhi, NCR, with expertise in several industries. With our residential, commercial, hospitality, and industrial projects, We are one of the fastest growing developers in the Delhi NCR region. We have completed the delivery of **5 million square feet** and currently have a base of **10,000+ satisfied clients**.



PRADEEP KUMAR AGRAWALLA  
CHAIRMAN

## ABOUT MANAGEMENT

One of the most seasoned real estate developers in the National Capital Region, **Mr Pradeep Kumar Agrawalla**, Chairman of the **Galaxy Group**, has close to 13 years of expertise. Born and raised in Barapali, Odisha, Mr Agrawalla, 55, launched his **Diamond Firm** in 1993 under the name **Galaxy Diamond Company Limited**. He established industry standards while conducting business outside Bangkok, Belgium, Hongkong, Mumbai, and other nations. Mr Agrawalla's far-sighted and diverse perspective inspired him to enter the real estate market, where he has garnered praise from customers and influential members of the sector. With the purchase of more major commercial properties and the beginning of his development plans, Mr Agrawalla is continuing his journey with dedication and

# ABOUT THE PROJECT

Netaji Subash Palace (NSP), has overtime become the hub for commercial and office spaces in Delhi Sawasdee NSP is a significant commercial development within NSP which will be developed with the best of facilities. It is designed and inspired by modern architecture, hence will comprise of a contemporary façade and elevation. It is also equipped with a combination of retail and office spaces, along with vast parking spaces, modern air conditioning facilities, clean and hygiene friendly toilets, well-spaced and lit corridors etc.

The Location of the development is at the centre of the entire district, and is surrounded by the DDA park (backside), other buildings and 9 mtr road(front). It is 0.5 km from NSP Metro Station, 0.2 km from NSP bus stand, 0.5 km from Delhi haat, and therefore, has excellent connectivity and accessibility.



# SPECIFICATIONS (RETAIL)

SHOP	
FLOORING	Vitrified, Ceramic tiles - Brands Kajaria/somany or equivalent
WALLS	Plastered walls
CEILING	Exposed roof slab
DOORS	Toughened glass door at shop front
SHOP FRONT	Toughened glass with space for signage
FIRE FIGHTING	As per Fire Department norms
POWER BACKUP	24 HR Power backup (on demand)
AIR CONDITIONING	DX Package unit/VRV system for air conditioning for shops

# SPECIFICATIONS (OFFICE)

OFFICE UNITS	
FLOORING	Bare Shell Flooring (No Tiles)
WALLS	Plastered walls
CEILING	Exposed roof slab
DOORS	Toughened glass-Wooden door
OFFICE FRONT	Wall (Tile/stone cladding/wood work/paint as per design)
FIRE FIGHTING	As per department norms
POWER BACKUP	24 HR Power backup (on demand)
AIR CONDITIONING	DX Package unit/VRV system for air conditioning for shops

# COMMON SPECIFICATIONS

LOBBY & COMMON AREAS	
FLOORING	Stone flooring, vitrified tiles-Brands Kajaria/somany or equivalent
CEILING	Gypsum Board/Mineral Fiber grid ceiling/Metal ceiling with paint
WALLS & PAINTING	Emulsion Paint/shop front stone cladding
RAILING	Steel & Glass Railing
ELECTRICITY	Common area electrical work with corridor lighting
FIRE FIGHTING	As per Fire Department norms
CCTV	24X7 Security with CCTV Surveillance
STAIRCASE	Stone flooring
LIFT & ESCALATORS	
LIFT	3 passenger lift only for office purposes & 1 service lift
ESCALATORS	2 Nos Escalators

## COMMON TOILETS

FLOORING	Italian Marble/vitrified tiles/stone as per design
CEILING	Gypsum Board/Mineral Fiber grid ceiling
WALLS	Porcelain/Ceramic Tiles
CHINAWARE & CP FITTINGS	Wall hung W.C., W.B., URINAL Brands Kohler/Jaquar/Roca/Toto or equivalent) & Hand Mixer, Faucet Brands-Kohler/Jaquar/Roca /Toto or equivalent

## BASEMENT AREA

FLOORING	Trimix flooring
LIGHTING	LED /ceiling mounted light
COMMON PARKING	Mechanical Parking (as per sanctioned plan)
CCTV	24X7 Security with CCTV Surveillance

## LANDSCAPING

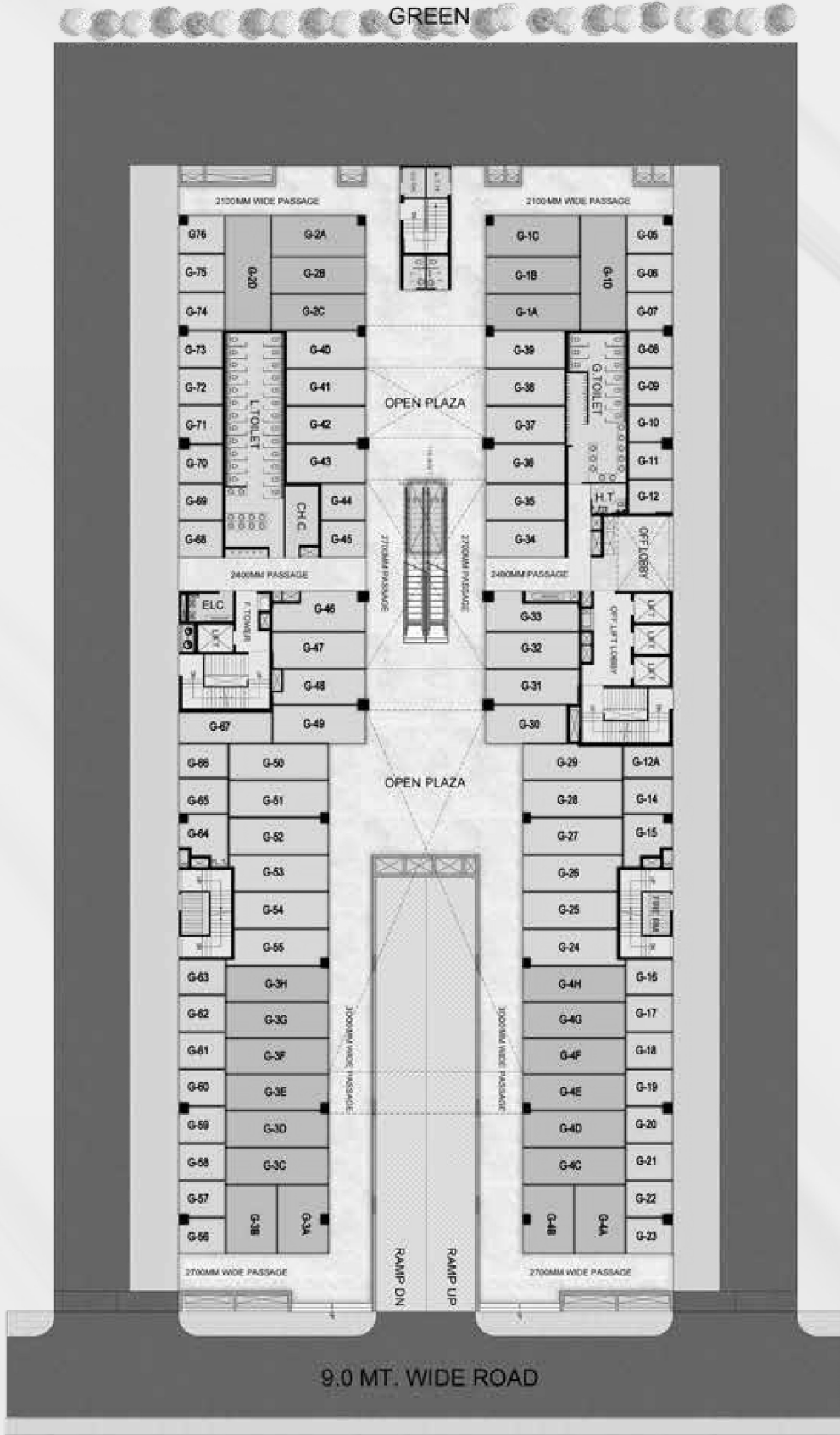
HARDSCAPE	Tiles/Trimix/concrete pavers/kerb stone/stone
INTERNAL ROADS	Trimix flooring/Pavers
LIGHTING	As per design/well lit premises
SOFTSCAPE	Natural grass/Plants/Trees etc.
CCTV	24x7 Security with CCTV Surveillance

## SEWERAGE SYSTEM & SOLID WASTE MANAGEMENT

SEWERAGE SYSTEM	STP Proposed
SOLID WASTE MANAGEMENT AND DISPOSAL SYSTEM	Garbage collection system at door step & compost by machine



# GROUND FLOOR PLAN



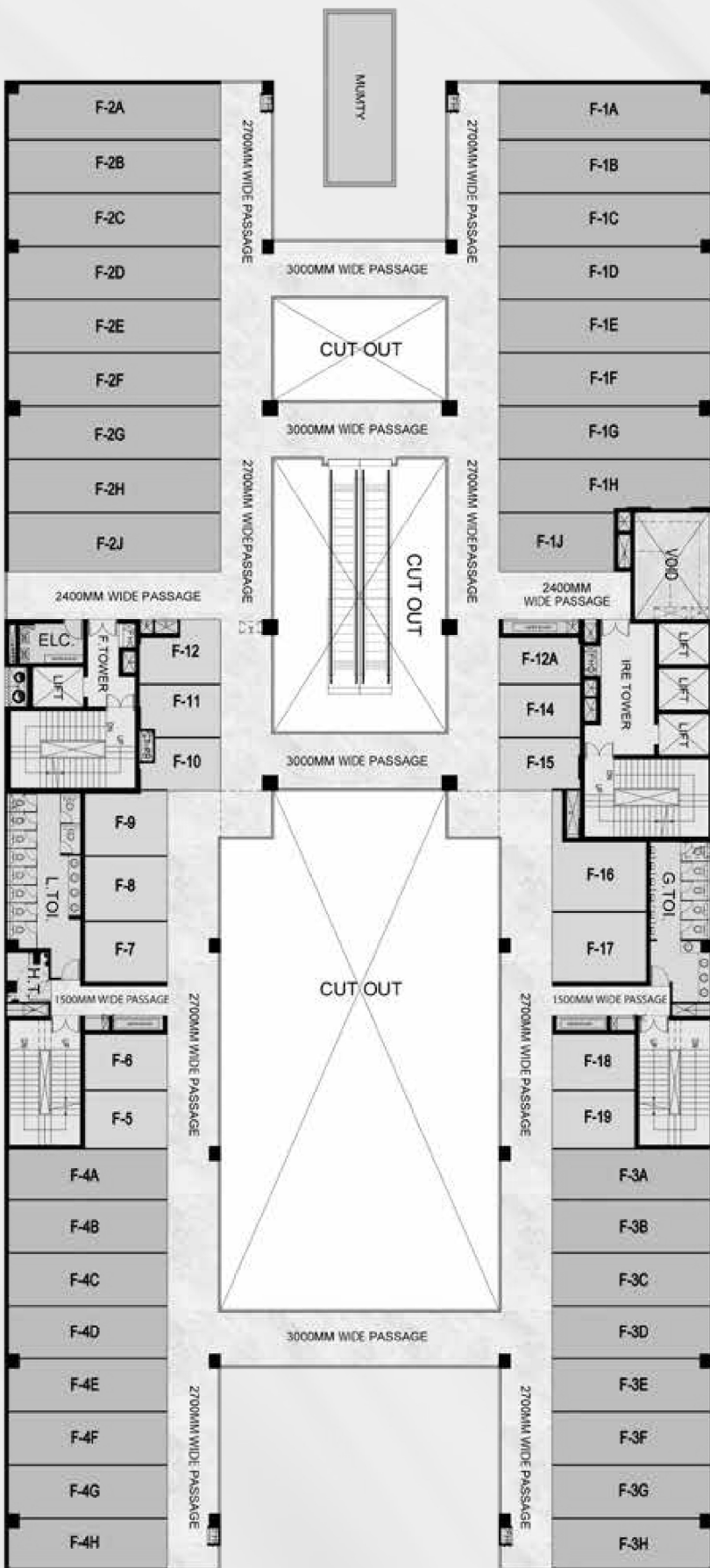
**DISCLAIMER:** The DESIGN/ELEVATION AND LOCALITY/VICINITY of the project contained in this BROCHURE are photographic and artistic impressions and are for ILLUSTRATIVE PURPOSES only and should not be relied upon when making a decision to purchase. The Developer does not take any responsibility for inaccuracy or variations in the illustration and information as depicted in the brochure.



## LEGENDS

ANCHOR SHOPS
SHOPS
TOILET
SERVICES/SHAFTS
CORRIDOR
OFFICE LOBBY

# 1<sup>ST</sup> FLOOR PLAN



## LEGENDS

ANCHOR SHOPS
SHOPS
TOILET
SERVICES/SHAFTS
CORRIDOR
OFFICE LOBBY



**DISCLAIMER:** The DESIGN/ELEVATION AND LOCALITY/VICINITY of the project contained in this BROCHURE are photographic and artistic impressions and are for ILLUSTRATIVE PURPOSES only and should not be relied upon when making a decision to purchase. The Developer does not take any responsibility for inaccuracy or variations in the illustration and information as depicted in the brochure.

# 2<sup>ND</sup> FLOOR PLAN



**DISCLAIMER:** The DESIGN/ELEVATION AND LOCALITY/VICINITY of the project contained in this BROCHURE are photographic and artistic impressions and are for ILLUSTRATIVE PURPOSES only and should not be relied upon when making a decision to purchase. The Developer does not take any responsibility for inaccuracy or variations in the illustration and information as depicted in the brochure.

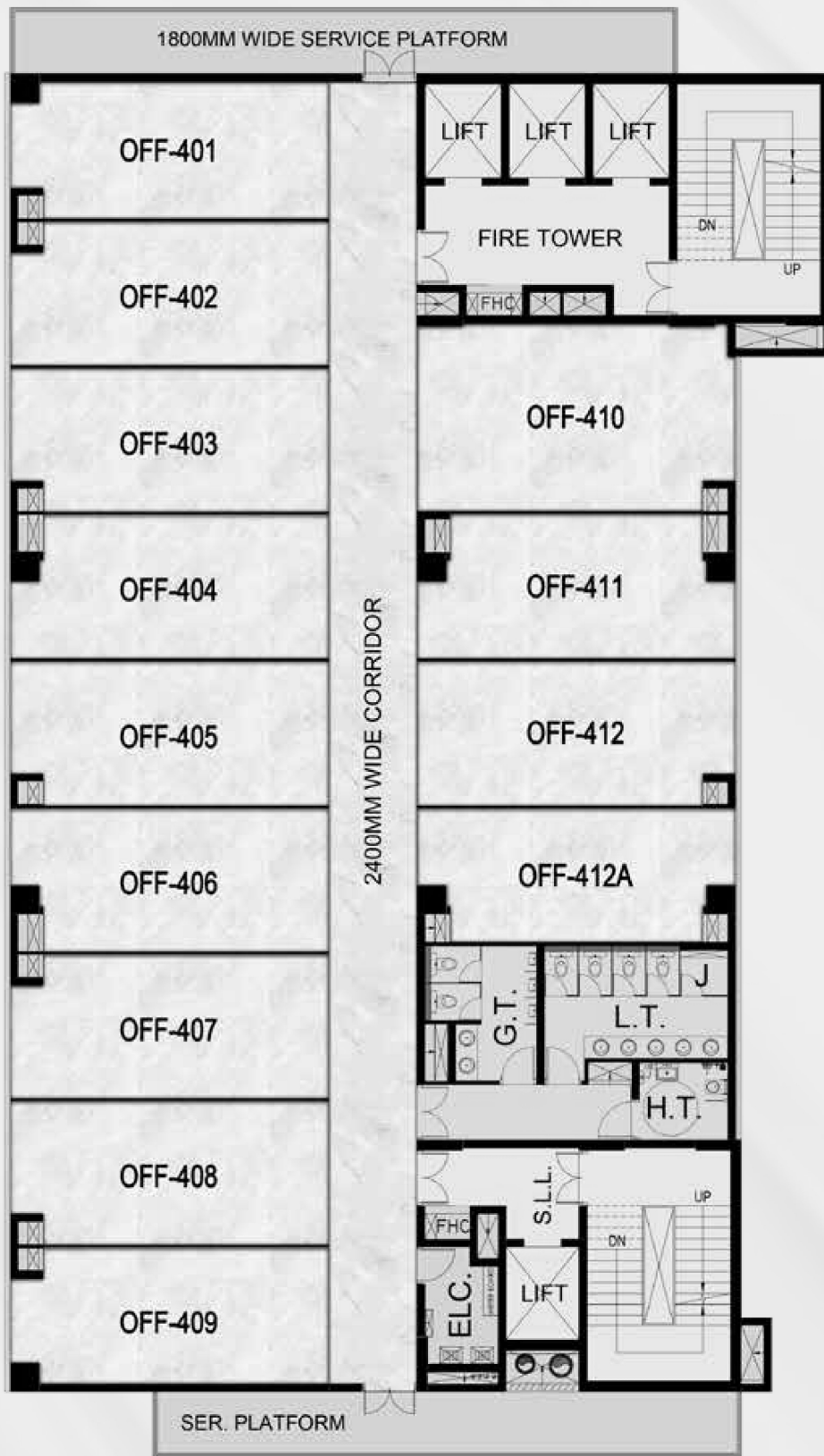


## LEGENDS

ANCHOR SHOPS
SHOPS
TOILET
SERVICES/SHAFTS
CORRIDOR
OFFICE LOBBY



# 4<sup>TH</sup> FLOOR PLAN



## LEGENDS

[Pattern]	OFFICE
[Pattern]	CORRIDOR
[Pattern]	TOILET
[Pattern]	CORE
[Pattern]	SERVICES/SHAFTS



**DISCLAIMER:** The DESIGN/ELEVATION AND LOCALITY/VICINITY of the project contained in this BROCHURE are photographic and artistic impressions and are for ILLUSTRATIVE PURPOSES only and should not be relied upon when making a decision to purchase. The Developer does not take any responsibility for inaccuracy or variations in the illustration and information as depicted in the brochure.

# NOIDA | NOIDA EXTENSION PROJECTS

## DELIVERED PROJECTS



GALAXY  
**NORTH AVENUE-II**  
2/3/4 BHK HOMES, GNIDA WEST



GALAXY  
**VEGA**  
2/3 BHK HOMES, GR. NOIDA (WEST)



GALAXY  
**royale**



**Galaxy  
Plaza**  
GREAT CITY Greater Noida (West)



GALAXY  
**Diamond  
plaza**  
GR. NOIDA WEST



GALAXY  
**BLUE  
SAPPHIRE  
PLAZA**  
GREATER NOIDA WEST

## ONGOING PROJECTS



sawasdee JLG  
**galleria**  
Experiences Beyond Luxury



**sawasdee  
CENTRE**



**SAWASDEE  
Street**

# DELHI PROJECTS

## ONGOING PROJECTS



## OTHER PROJECTS

**Galaxy  
Shoppe**  
GSAUR CIDreater Noida (West)

galaxy  
Jreen  
**arcade**